

The Beltsville News

AN ALL-VOLUNTEER NEWSPAPER

PUBLISHED BY THE BELTSVILLE-VANSVILLE DISTRICT CITIZENS' ASSOCIATION, INC.

The Beltsville News
11722 Emack Rd.
Beltsville, Md. 20705

Vol. 66, Number 1

Beltsville, Maryland

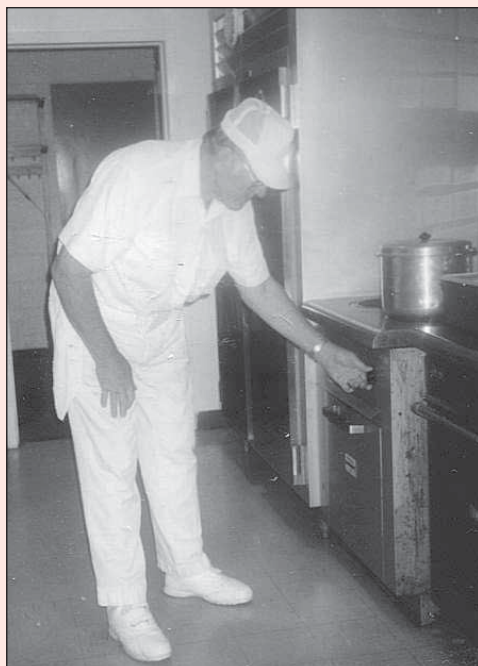
January 2018

By Rick Bergmann

To many of you, Baker Bill was the writer of "Stuff and Things" in *The Beltsville News*, but to me, he was just Bill. He was the only person in the world who would call me "Ricker." I've known Bill for most of my life. He was a faithful member of Emmanuel United Methodist Church and a constant presence as I grew up in the congregation. When I heard of his passing on Thanksgiving, it made me think about all of the times I got to work with Bill and realize how much he taught me over the years.

I grew up in Emmanuel and will always remember Bill's booming voice and his love of singing in the choir. While in college at the University of Maryland, I took over the leadership of the youth group at the church. Because I was the youth leader, I was now a member of the church administrative council. Bill was also on the council as the chair of the finance committee. Bill would often

My Friend Bill



Baker Bill cooking for the monthly men's breakfast at Emmanuel UMC.

come to meetings to complain that we were spending too much money. We always knew that when Bill was there we were in for a lecture on cutting our spending. Bill would frequently come over to me after I would ask for money for an event and say to me "Ricker, I think you are doing wonderful things with those kids, but stop spending all our money. Try and do things a little cheaper. We do not want you to bankrupt the church now." I knew he was kidding and that he was proud of all the things we were doing with the youth, but I also knew that he wanted to make sure that I was teaching the kids to be good stewards of the church.

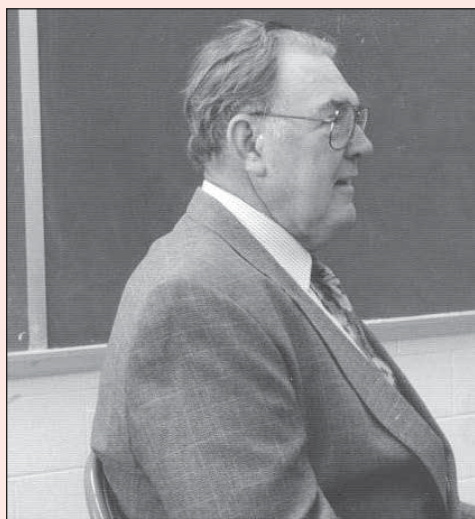
During this time, there were a few other things we could count on at Emmanuel. One of them was that, during the summer, the pastor would take his vacation in June and August. As youth leader, I was always asked to deliver the message one week during August, and for some reason, Bill always delivered the message during one week in June. Somehow it always seemed that the week that Bill delivered the message I was the scripture reader for the morning and the week that I delivered the message Bill was the scripture reader. I always looked forward to working with Bill on those Sunday mornings; he always gave a good message. The other thing I could count on when Bill was reading scripture was you never knew what

MY FRIEND

continues on page 2



Baker Bill loved singing in the choir. Here he is getting ready to sing on Easter Sunday with Margie Mock.



Baker Bill listening intently during Sunday Morning Bible Study.

PRSRT STD
U.S. POSTAGE
PAID
Permit #3173
Beltsville, MD

NEXT ISSUE:
Submissions Due
No Later
Than:
January 24
Paper Out:
January 31

On the Agenda

By President Karen M. Coakley

H A P -
PY NEW
Y E A R !!!
The Citizen's
Association
will not meet
in January.

S N O W -
S T O R M
REMINDER



Karen Coakley

TIPS: please

park your cars on the side of the street with "EVEN" address numbers. In some neighborhoods like Beltsville Heights or Wicomico Avenue by Beltsville Academy when cars are parked on both sides of the streets during snowstorms the snowplows, fire trucks, and ambulances CANNOT get down the streets. I realize that we are not supposed to park cars on the grass. However, I believe public safety is important, and the streets cannot be cleared if the snowplows cannot get down the streets with cars parked on both sides of the street. If the streets are not cleared, fire trucks, ambulances, and police cars may not be able to respond to emergencies. Please reach out to your neighbors and develop a parking plan that allows your street to be plowed.

Do you know what to do with your trash and recycling on your regularly scheduled collection day? In the event of inclement weather, residents are advised that bulky trash, once-a-week trash, and recycling and yard trim/waste collections may be delayed or suspended due to the road or weather-related conditions. If collection services are postponed, every effort will be made to pick up the missed collections on the

Beltsville Briefs

Emmanuel UMC Is Seeking a Song Leader

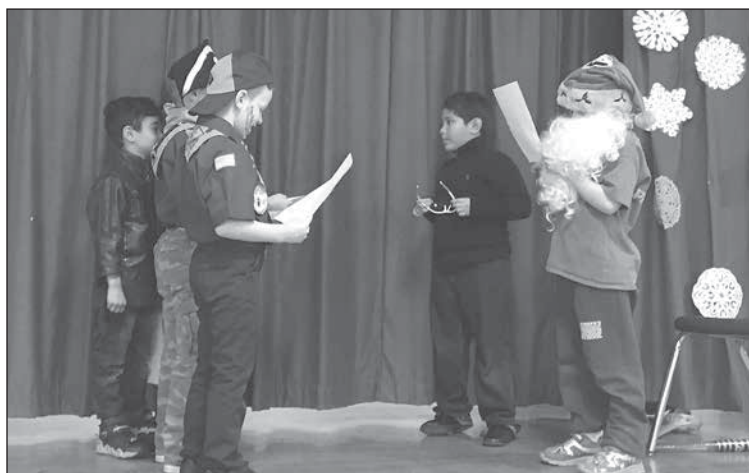
Emmanuel United Methodist Church, 11416 Cedar Lane, Beltsville, MD 20705, is seeking a praise band song leader for its Sunday morning contemporary worship service at 9 am. The position requires 3 to 4 hours per week. If you are interested or would like to find out more, go to <https://www.eumcbeltsville.com/job-opportunities>. If you have any questions, email applications@eumcbeltsville.com.

Cub Pack 1031 Winter Musical Fun

Members of Cub Pack 1031 are humming along working on skits and winter songs while learning about how to be a good citizen. We collected a huge bag of toys for the sick children at the Children's National Medical Center to help make their holidays happier while they are in the hospital.

Most of the dens are working on citizenship: Lions learned about safety, and the Wolf den did the flag opening at the December pack meeting and regaled us with a wonderful skit. The Bears learned about two famous Americans and how to display the flag, and they are working on safety. The Arrow den are also learning about flag history and rights and duties of citizens.

We also had some fun—working on winter skits and songs at



The Wolf den entertain the pack with their holiday skit

the holiday party. The Wolf and Bear den did skits, and the Webelos earned the music pin, Maestro, by singing songs and playing their instruments. The Arrow den also earned Maestro by making

handmade "tambourines" and singing "Frosty the Snowman." They also made blue and gold balls and reindeer candy canes.

MUSICAL

continues on page 10

ON THE AGENDA

continues on page 2



HAIRSYLIST BONNIE KNOX

Former stylist of Beltsville
Looking to connect
with my clients.

Please text or call
410-703-4946
to set up an appointment

Share Your News!

Send your article submissions to News Director
Rick Bergmann at editorbvnews@gmail.com



**New
Patients
Welcome**

Beltsville Dental Care

John J. Moynihan, DDS, PA
10760 Rhode Island Ave.

301-937-4448

Visit us at beltsvilledentalcare.com

Neighbors in the News



The children of St. Joseph's performing their annual Christmas Pageant.

MY FRIEND

continued from page 1

he would read and what he would condense. If Bill thought a passage was too long, he would do his own editing to condense it. I had to be quick because if my message revolved around something he had condensed I had to give a little more explanation before beginning to speak. I asked him about it once, and he told me that people want to hear the message, they want to get what's important. They do not want to listen to the same Bible stories they have heard dozens of times, so I make it a little quicker for them. He always kept

me on my toes on those Sundays.

One of the things Bill began at Emmanuel was the Men's Breakfast. It was a monthly tradition for many years. He would come in and cook breakfast one Saturday of the month for all the men. It was a time for them to get together and enjoy breakfast and talk. Bill did all of the cooking by himself, coming in early in the morning to make sure it was ready by 8:30 am. He retired the breakfast after many years, and it was inactive. Around 2012, someone suggested bringing it back. I thought it was a good idea and I went to Bill to ask if he was ok with me restarting it. I'll never forget his face lit up and

he said: "Absolutely, I think that is a wonderful idea." I asked him if there was any advice he had, and he said "I only have one thing to tell you, don't try and do it as I did it. Make it your own because you and I are different. If you try it my way, everyone will compare you to me, and that's not fair to you." Those are words that I have never forgotten; I still use them to this day. My one regret is that I was never able to convince Bill to come. He would always tell me that he was afraid that if he came people would try to compare the two of us, and he wanted to give me a shot of making it my own.

I learned a lot from Bill over the years. I am sad that our only communications over the last few years have been through email. He would always email me and tell me how proud he was of me and what I was doing with *The Beltsville News*. He would also ask for more copies to be delivered to Riderwood because he was quite popular there and they were always running out. I will miss Bill, but I know he is up in heaven letting them know how to make the most wonderful baked goods.

Beltsville News

PUBLISHED BY THE BELTSVILLE-VANSVILLE DISTRICT
CITIZENS' ASSOCIATION INC.

News: Rick Bergmann, editorbvnews@gmail.com, 11318 Big Horn Ct. Beltsville, MD 20705. Enclose self-addressed stamped envelope if photo is to be returned. Accepted material may be edited. Letters to the Editor on local topics are encouraged. Names may be withheld upon request.

Advertising:

937-6796 Ted Ladd, 11722 Emack Rd., Beltsville 20705 • tedladd02@aol.com

Subscriptions:

Send \$15.00 to Carolyn Scarcia, 11007 Emack Rd., Beltsville 20705

Distribution: 937-7765 (other) Carolyn Scarcia

Editor Emeritas: Sally Ehrle

Staff Listings

Managing Editor/News Director: Rick Bergmann
Advertising Manager: Ted Ladd Business Manager: Ted Ladd
Senior Copy Editor: Bryant Davis Circulation: Carolyn Scarcia

Supporting Staff Members: Jim Butcher, Ivy Christoffers, Karen Coakley, Bryant Davis, Rebecca Hutchings, Mariah McKenzie, Lynne Miller, Elizabeth Olson, Bill Raulin, and Nancy Thrush.

Circulation

14,000 copies published monthly; 10,000 mailed in the 20705 zip code (total saturation) and 4,000 pick up copies available at the Beltsville library, community center, selected stores, and churches.

Please join our Facebook page

(<https://www.facebook.com/groups/300944563420364/>)

and follow us at beltsville news on Instagram.

Check out our website: www.beltsvillenewstoday.com

ON THE AGENDA

continued from page 1

following day after that day's regular collections. Residents are reminded to leave their collection containers at the curbside, and that pickups can occur from 6 am to 8 pm. If pickup is suspended for two days, take your stuff back in and put it back out at your next scheduled pickup day the following week.

Beltsville Community Email List: If you would like to receive emails from the Citizen's Association, please send me your email address. FYI: If you had a Verizon email address, please send me your new email address.

I can be reached with community concerns at 301.937.3490 or karenmcoakley@msn.com.

301-477-1074 | contactus@lhmiinc.org

Join Us at The City

LIGHTHOUSE MINISTRIES INTERNATIONAL

10727 Tucker St. Beltsville, MD 20705 | www.LHMIinc.org

STEP INTO THE LIGHT 2018

New Year's Eve Celebration
Sun. Dec. 31, 9 p.m. - 12 midnight.

Happy

New Year

GAIN A BETTER VISION FOR YOUR LIFE

With 21 Days Fasting & Prayer - Jan. 7-27
Anointing & Blessing - Jan. 28 @10 A.M.

10th Anniversary
Bus Trip: Lancaster, PA
The "JESUS" Show
Tickets: \$170 (Adults)
\$75 (kids under 12)
3.17.2018 - 7PM show

CELEBRATING 10 YEARS

Commemorate with us during March 2018.

Join Us This Week For Worship & Fellowship at Lighthouse Ministries International

- Bread of Life Distribution (Pantry Program) - Wed. 6pm & Sun. 1pm
- L.I.F.E Hour (Learning Is For Everyone) - Sunday, 8:30am - 9:30am
- A Lighthouse Moment (Sunday Worship) - Sunday, 10am
- Light Through The Word (Prayer & Bible Study) - Wednesday, 7:30pm
- Little Beacons of Light (Kids Fellowship) - Friday, 7:30pm
- Shining Lights Youth Ministry (Youth Fellowship) - Friday, 7:30pm
- Virtuous Ladies of Light (Women's Fellowship) - Friday, 7:30pm
- Titus Men of Light (Men's Fellowship) - Friday, 7:30pm

My Wife and I pray that your territories will be enlarged and out of your homes and lives will shine the salvation of Jesus to others. We pronounce blessings upon your household, your business, and may everything you put your hands to be fruitful. We declare life in your marriage, your career and your mission.

Rev. Dr. Owen F. Cameron, PhD & Lady Cora-Dian Cameron



Maryland Farms Resident's Annual Fall Walk

By Mary S. Washington

Residents of Maryland Farms Condominiums participated in their annual fall walk on

October 21 followed by Halloween activities at the community center. The walkers enjoyed viewing flowering plants throughout the neighborhood while in the company of good friends

and neighbors. Two youngsters, Camille and her sister, were welcome additions to the group.



Participants in the annual fall walk at Maryland Farms



Camille (left) and her little sister participate in the walk

Olive Garden Makes a Difference Fighting Hunger in the Community

According to Feeding America, a nonprofit organization, one in eight Americans are food insecure. That's just one of the reasons Olive Garden has a long-standing tradition of feeding those who need it most in our local community.

For 14 years, the more than 800 restaurants nationwide have participated in Olive Garden Harvest. Through this program, restaurants gather unused, surplus food each week and prepare it for donation to a local nonprofit organization. Items like lasagna, soups, sauces, and vegetables are donated.

To date, the 16 Olive Garden restaurants in the DC metro area have donated more than 388 thousand pounds of food to local nonprofits. Locally, the Laurel Olive Garden regularly donates to Laurel Advocacy & Referral Services. Additionally, the Hyattsville location partners with Teen Challenge of DC.

Olive Garden restaurants nationwide have donated more than 38 million pounds of food since 2003



Olive Garden General Manager takes donated surplus food out to nonprofit's truck that picks up the food on a weekly basis.

to local community food banks through the program. This donation equates to 31.5 million meals.

All Darden Restaurants brands, including LongHorn Steakhouse, participate in the Harvest food donation program. Together, the family of brands have donated 100 million pounds of food—or 83.3 million meals—to nonprofits nationwide.

But that's not all. In addition to the Harvest program, the Darden Foundation recently donated \$1.7 million to Feeding America to further hunger relief efforts. Of that amount, \$841,000 was donated on behalf of all Olive Garden locations, like the ones here in the Prince George's County area. This donation is just the latest demonstration of Olive Garden's commitment to Feeding America. In 2016, the Italian-inspired restaurant donated \$500,000—the equivalent of 5.5 million meals—to the nonprofit in support of its mission for hunger relief.

2018: Year to Help and Support the Persecuted

By Joseph Martinez

Hello everyone! Since I moved to Canada and began a new life with my wife, I never thought that I would write for *The Beltsville News* again. However, something very important brought me to write the most significant article of my life. I hope that you will consider fighting for another group of people this new year.

Try to imagine living in a country where you are persecuted because of your beliefs. Everyone is born with the right to believe in something; no one should be persecuted solely because of his or her faith.

Thankfully, because of the freedom we have in the United States, we do not experience persecution on a regular basis. However, in North Korea, people are born into oppression for their

beliefs and religion. The government of North Korea dictates what people can and cannot believe. Citizens are forced to obey, and those who refuse are often persecuted, sent to labor camps, or executed. As a result of this oppression, life is incredibly difficult for the people of North Korea. There are various outlets to serve and learn more about the suffering of those living in North Korea.

If you want to help, International Christian Concern (<http://www.persecution.org/>) has a volunteer program through which volunteers can serve Christians who are being persecuted for their faith, including those in North Korea. Before I began writing for *The Beltsville News*, and even still after moving to Canada, I have volunteered with this organization.

Please pray for the persecuted Christians in North Korea, but also consider other oppressed

communities that are suffering for their faith. The will of Jesus Christ is that we love our neighbors and help them. Below are some additional organizations in Washington, DC, and Maryland:

1) ACLJ, which also helps those suffering in North Korea: <https://aclj.org/search?q=North+Korea>

2) No Kid Hungry, which provides food for hungry children in the United States: <https://www.nokidhungry.org/>

3) Planet Aid, which provides other goods for the needy in the United States: <http://www.planetaid.org/>

Please help anyone that you know who needs your help because, "who doesn't live to serve, doesn't serve to live." Think about it and pray. God bless Beltsville, and have a blessed New Year!

NEW YEARS SALE

January 1st thru 31st

Decorate for the New Year

20% Off Art, Mirrors & Furniture (non-sale items only)

\$5.00 Off regular retail price per gallon of Ben Moore Paint Regal, Natura, & Aura

20% Off Custom made draperies, valences and upholstery (fabric only)



Michael & Valerie wish our Friends and Customers a Healthy & Prosperous New Year!!

Will's Decorating
10508 Baltimore Avenue,
Beltsville, MD 20705
301-937-6100



We've Moved to..

**335 Main Street
Laurel, MD 20707**
301-937-1904 • Fax 301-937-9583
beltville@minutemanpress.com
www.beltville.minutemanpress.com

**Business Cards • Letterheads • Envelopes
Brochures • Color Copies • Mailing Services
Forms • Large Format Plans**

*The combination of the quality that you associate with
a large commercial printer and the convenience you
enjoy with a quick printer.*

**Hours: Monday - Friday
8:30 am - 5:30 pm**

Tech Sense By John Bell



Have a Virtual New Year

This month, I thought I would use a theme for the column using completely different topics that all use the word “virtual.” This includes virtual reality (VR), virtual machines (VM), and virtual private networking (VPN). Let’s start with VPN.

Virtual Private Networking

Networking in this context is connecting two or more computers together. Most modern computers have network hardware and software built-in allowing connections to a network (typically Ethernet) or use of Wi-Fi to connect wirelessly and communicate with other computers. Some protocols like transport layer security (TLS) used in the HTTPS protocol are supposed to prevent others from being able to access the communications sent using these networks. HTTP does not provide this protection. Also, HTTPS is often compromised by intermediaries that either intercept or block the communication. Internet service providers (ISP) can listen to all non-secure communications, and while they cannot read the messages sent via TLS, they know where the messages are being sent.

Virtual private networking (VPN) is a protocol that uses an encrypted communications channel to send Internet data to a trusted third party, which then forwards the information to its destination. The ISP or local computer network cannot see the contents of the message, and it cannot see the message’s destination. Your ISP cannot see the contents or the address, other customers in Starbucks cannot see it, and the hotel you are staying in can’t.

The VPN protects your internet traffic from being monitored on the public internet.

I expect to write a more detailed discussion of VPN in a future column. If you want more information now, you may want to look here: <https://thatoneprivacysite.net/>.

Virtual Reality

Virtual reality is a computer-generated environment that includes a 3D video display that may also be combined with sound and motion. Today, there are several 3D technologies that are becoming popular toys. The least expensive ones have you place your smart cell phone into a

holder and run a VR app. A good example of this is the Google Cardboard viewer. You can build one yourself or purchase one on the internet for a few dollars. It is made mostly of cardboard and holds your cell phone, which runs a VR app. There are many free apps available on the Google Play store and iTunes that work with the cardboard viewer. There are also similar devices made of plastic that sell for under \$20.

Virtual Machines and Emulators

This last category is about “virtual machines.” A virtual machine is a computer created using software. It may run its own operating system and applications and may emulate different hardware than the hardware running the virtual machine software. The computer running the VM software is called the host or virtual host, and the virtual machine is called the guest. The host runs a hypervisor that manages the guests. Most computers using a multi-core processor from Intel or AMD have hardware designed to run a VM nearly fast as the host machine it runs on. This allows a Macintosh to run a Windows guest or a Windows host to run different versions of Windows or Linux. A multi-core CPU can often run 2 or 3 virtual machines at the same time. VirtualBox (<http://virtualbox.org>) is a free and open source hypervisor that runs on Windows, Apple OSX, and Linux and can easily run various versions of Windows and Linux guests.

In general, a hypervisor runs on the host and is designed to leverage the host’s hardware to support running multiple guests on the same hardware. An emulator is a special case of a virtual machine where the hardware of the guest including the central processing unit (CPU) is emulated completely in software. This emulation software is typically written to mimic the actual hardware as closely as possible.

TECH SENSE
continues on page 5



Behnke Nurseries

Known for Quality Plants Since 1930

Bright Shiny January!

Time for a fresh start in the outdoor garden (plan now) and making our indoor gardens flourish. Fun tropicals, new ceramic pots, shiny new tools and tons of new seeds, each containing new garden potentials!

Free Classes in January

more info & sign up at www.behnkes.com under “Events”

- The Very Best, Tried & True Houseplants & Their Care (Jan. 13)
- Squirrels, Groundhogs & Rabbits, Oh My! (Jan. 27)
- Terrariums & Containers Gardens:
Creating Miniature Gardens for Indoor Fun (Jan. 28)

“Potting Party” Workshop in January

more info & sign up at www.behnkes.com under “Events”

- Build terrariums and or dish gardens with a little help from Carol Allen.
Cost - \$5 plus materials; pre-registration required

Orchid Diagnostic & Repotting Clinic

w/ Carol Allen

January 20, 9:30 to 4:30

January 21, 9:30 to 4:30

Carol’s advice is always FREE. Bring in the plant(s) you are concerned about. She will tell you how to resolve problems, and, for a fee, she will expertly repot them, showing you how.

Bonsai Hands-On Class w/ Jennifer Park

Saturday, January 6, 2:00 to 4:00 pm

registration required - www.shop.behnkes.com

Fee: \$65 - all materials provided

With a focus on care and maintenance, learn all the basics of bonsai design. Select a tree, learn how to transplant, and discover what the art of bonsai is all about as you create your very own bonsai to take home. This is a fully inclusive class.

**National Capital
Orchid Society (NCOS)**

Orchid Auction

**Sunday, February 11, 2018
at Behnke Nurseries**

10-11am bidder’s preview;

11am-3pm Auction

Free admission - open to the public.
more info at www.ncos.us



(301) 937-1100

11300 Baltimore Ave., Beltsville, MD

www.behnkes.com • behnkes@behnkes.net



Local Youth Are Giving Back

By Rick Bergmann

The youth of Emmanuel United Methodist Church spent this fall giving back to the Beltsville community. They gave up their weekends to host several programs for local families and residents in Beltsville and the surrounding neighborhoods. The youth program has approximately thirteen students involved, and they are learning what it means to be a part of the broader community.

In October, the teenagers planned and held a community Halloween party for children from toddlers through 6th grade. The students spent a Sunday afternoon decorating the top floor of the church and putting together food and games for the party. This outreach is an annual tradition for them, and they always have a good time.

In December, they planned a family dinner and visit from Santa for members of Emmanuel and residents of the Beltsville. They cooked lasagna, baked rolls, and provided salad and desserts for almost 50 people. They spent the afternoon prior to the dinner setting up the fellowship hall at Emmanuel and making it festive and fun for their guests.



Several members of Emmanuel UMC's youth outside of Hillhaven nursing home preparing to sing Christmas carols to the residents

The teens also spent time in December making cookies and Christmas ornaments. They then visited the residents of Hillhaven's memory care unit. During their visit, they delivered the cookies to the staff of the nursing home, sang Christmas Carols to the residents, and then visited with them and gave them each an ornament for Christmas.

The youth of Emmanuel are

learning to live this lesson from the book of Matthew: "You shall love the Lord your God with all your heart, with all your soul, and with all your mind." This is the first and great commandment. And the second is like it: "You shall love your neighbor as yourself." They hope you can join them for one of their many community events that will occur in 2018!

TECH SENSE

continued from page 4

DOSBox (<http://dosbox.org>) is software that emulates the 8086 processor from the original IBM PC. This allows DOSBox to run old DOS applications. If you still have old DOS games you like to play; you can run DOSBox on your Windows or Linux computer and still play them.

There are also emulators for the Commodore 64, the Apple IIe, the GameBoy, and many other old computers and gaming systems. DOSBox and some of these other emulators will even run on a Raspberry Pi. This lets these old games run on today's modern computers.

I hope your holidays are wonderful and you have fun playing with your new technology toys!

Chanticleer Gardens west of Philadelphia

Oh, how I wished
I could stay in Chanticleer
for a long long time!

In Spring when God's Green
returns to the world,
buds blooming into the
flowers' beauty!

In Summer I would lounge
in the shade of warm sun
looking out into the wide vales
surrounded by tall trees and listen
to the song of courting birds.

In Fall I might wait for
the bush and trees' colors
to turn celebrating the joy of
the end of the year!

When Winter arrives
with the sky's beautiful white flakes
to turn the land into winter won-
derland,
icicles as diamonds attached to the
twigs of trees are sparkling
into the Christmastime.

Yes,
I would like to spend my time
in Chanticleer Gardens
all year long!

(c) Ingeborg Carsten-Miller

WASHERS DRYERS OVENS
JEFF'S SERVICE
APPLIANCE INC.
SERVING BELTSVILLE
OVER 20 YEARS
301 937 6003
DISHWASHERS MICROWAVES REFRIGERATORS

Open for breakfast daily at 8 am

tj's of Calverton
RESTAURANT

Enjoy All American food
Served in a relaxing Atmosphere!!

Thanks to you we are Celebrating 31 years!
ENJOY 15% SAVINGS
VALID FOR DINING ROOM ONLY * MAX VALUE \$5.00
GOOD FOR FEBRUARY 2018

for full menu and more info please visit us at
www.tjsofcalverton.com
11607 BELTSVILLE DRIVE *BELTSVILLE MD * 20705
301-572-7117
Located in the Calverton Shopping Center

THE METRO AREA'S TOP RATED TREE SERVICE

 **Adirondack
Tree Experts**

Removal · Pruning · Thinning
· Stump Removal
· 24-Hour Emergency Service
· Crane Service
· ISA Certified Arborist

FREE ESTIMATES
301-595-2827
www.AdirondackTreeExperts.com

 I.S.A Certified Arborist / MD Licensed Tree Experts / EHAP Certified Arborist
ISA Qualified Tree Risk Assessors / Full Liability and Workman's Comp Insurance 

THE CRESCENT NURSERY AND SUMMER PROGRAM

Est. 1959
11723 Chilcoate Lane, Beltsville, MD
(301) 937-3133
CHILDREN 2-6 YEARS
and
BEFORE/AFTER SCHOOL PROGRAM
Qualified staff. A caring environment. Specially
planned programs. Snacks provided.
Open all year. All day.

Share Your News!

Send your article submissions to News Director
Rick Bergmann at editorbvnews@gmail.com

Wood's Flowers and Gifts

Fresh Flowers
Beautiful Roses • Cards
Plants • Dish Gardens
Orchid Plants • Silk Flowers
Stuffed Animals • Balloons

Happy
New Year!



Daily deliveries locally and
across the country. Bring in
this ad for \$5.00 off any order
of \$30.00 or more.

Wood's Flowers and Gifts

Family-owned and operated since 1938

9223 Baltimore Ave. College Park, MD 20740
301-474-7000 | woodsflowersandgifts@gmail.com

Obituaries

Findley, John C.

On Monday, November 20, 2017. Husband of Delores C. Findley; father of Sherri (Morgan) Kennedy, Debbie (Sally) Findley, John (Jennifer) Findley, and the late Richard Findley; brother of Ryan Loughlin and Linda Mierzski; grandfather of Erin, Riley, Arich, Karrah, Catherine, Bayleigh, Samantha, Nichole, and Lauren; also survived by five nephews. Memorial Mass was held at St. Joseph Catholic Church, 11007 Montgomery Road, Beltsville, MD, on Friday, December 1, at 11:30 am. Memorial contributions may be made to the Maryland chapter of Concerns of Police Survivors at www.mdcops.org/donations. Arrangements by Borgwardt Funeral Home (www.borgwardtfuneralhome.com)

Raulin, William "Baker Bill"

William "Bill" Raulin passed away on Thursday, Nov. 23, 2017, in Silver Spring, MD, after suffering a stroke.

Bill was born on May 7, 1932, in Washington, DC, to Maude and William Raulin. Bill met and married his wife, Betty, in 1955 while serving with the Air Force in the UK. Fondly known as "Baker Bill," he owned and operated Raulin's Bakery in Beltsville, MD, from 1964-1980. His passion for baking inspired his monthly column "Stuff n' Things" in *The Beltsville News*, and he taught baking classes in the community. He enjoyed singing in the choir at Emmanuel UMC and Riderwood.

Mr. Raulin is survived by his wife, Betty Raulin; his three children, Steve (Kenzie), Wendy, and Jane Kissel (Ken); and four grandchildren.

Private interment at the Maryland Veterans Cemetery in Crownsville, MD, with full military honors. Charitable donations may be made to Emmanuel United Methodist Church, 11416 Cedar Lane, Beltsville, MD 20705.

Gallagher, Bernard Henry

Bernard Henry Gallagher of Beltsville, MD, died on December 5, 2017, at Corsica Hills Nursing Home. He was 89.

Mr. Gallagher was born on November 19, 1928, a 5th generation native of Alexandria, VA. He graduated from George Washington High School. In 1948, he joined the US Army Reserve and was called up in 1950, serving during the Korean War. He completed his military career as a sergeant first class. He married

Charlotte Ward on June 24, 1957, and the couple made their home in Landover Hills, MD, later Beltsville, MD. He worked in the railroad industry, starting his career in 1946 with the Southern Railroad, later moving to the Fruit Grover's Express and then the Washington Terminal Company. He was a steam locomotive machinist and carman. He went on to work for Allen Mitchell & Co., a machine shop, of Washington, DC, and was a contract machinist at NASA Greenbelt. He retired in 1990.

Mr. Gallagher was a member of St. Joseph's Catholic Church in Beltsville, MD; the Knights of Columbus; and the National Historical Railroad Society. He was instrumental in the restoration of the Pullman car "Dover Harbor" and held the title of Chief Mechanical Officer Emeritus. He was dedicated in the service of his brother machinists, serving as a shop steward and local officer. He was an accomplished model railroad train builder and railroad historian.

He is survived by his loving wife, Charlotte Mary Gallagher, of Beltsville, MD; his children: Madeline Mitchell (David) of Alexandria, VA, Bernard Gallagher of Beltsville, MD, and John Gallagher (Jeanine) of Cordova, MD; a sister, Jean Whalen of TX; grandchildren: Blaine (Jessica), John, Austin, Juliana, Alexander, and Scott; and 4 great-grandchildren. He was preceded in death by his parents, Bernard Travers Gallagher and Eleanor Kate Kingsley Gallagher; a daughter, Marie Miller; and a brother, Michael Gallagher.

A Memorial Mass will be celebrated at 11 am on Wednesday, December 13, at St. Joseph's Catholic Church in Beltsville, MD. In lieu of flowers. Memorial contributions may be made to the National Railway Historical Society, 1001 G St. NW, Ste. 800W, Washington, DC 20001 or www.nrhs.com; or to the Alzheimer's Association, PO Box 96011, Washington, DC 20090 or www.alz.org.

Gross nee Tyner, Edna M.

On Wednesday, December 6, 2017, Edna M. Gross, age 78, passed away. Loving mother of Leslie T. Moore, Lester E. Gross, III, Lisa M. (Frank) Malone, and Lionel E. (Ayisha) Gross; grandmother of 11; great-grandmother of two; sister of Shirley Pratt. Relatives and friends may call at Queens Chapel United Methodist Church, 7410 Old Muirkirk Road, Beltsville, MD 20705 on Saturday, December 16 from 9 am until the time of service at 11 am. Interment Maryland National

Memorial Park. www.borgwardtfuneralhome.com.

Lee, William F. Jr.

Beloved husband of Marian A. Lee; loving father of Robin (Jim) Gerretson, Rick Lee, William (Linda) Lee, Carol Lee, and Gary (Angie) Lee; grandfather of Megan (Josh) Tiralla, Nick Lee, Brittany (Stephen) Roberts, Billy, Tony, Mike, and Ryan Lee; great-grandfather of Kelly Lee, Arianna Roberts, Evelyn Tiralla, and Dennis Tiralla. Funeral service was held at Borgwardt Funeral Home, 4400 Powder Mill Rd., Beltsville, MD 20705, on Wednesday, December 13, at 10 am. Interment Parklawn Memorial Gardens. Memorial contributions may be made to National Parkinson's Foundation, Inc., P.O. Box 5018, Hagerstown, MD 21741-5018. www.borgwardtfuneralhome.com.

Ziepol, Robert Charles

On Monday, December 11, 2017, Robert "Bob" Charles Ziepol (age 100) passed away. Beloved husband of the late Emily A. Ziepol; loving father of Robert A., James A., and Elsie M. Ziepol; brother of the late Viola Jewell; grandfather of Charles, Patrick, and the late Stephanie. Also survived by his lady friend, Debbi Stefany. Funeral service was held at St John's Episcopal Church, 11040 Baltimore Avenue, Beltsville, MD, on Saturday, December 16, 2017, at 11:00 am. Interment church cemetery. Memorial contributions may be made to Arc of Prince George's County, 1401 McCormic Drive, Largo, MD 20714, or Hospice of the Chesapeake, www.hospicechesapeake.org.

Frye, Harriet A.

Harriet A. Frye passed away on December 12 at the age of 95. She was born in Vicksburg, Mississippi. At the age of 3, her family moved to Mobile, Alabama. In 1934 she moved to Washington D. C. She graduated from McKinley Tech High School in D.C. In 1943, during WWII, she joined the women's marine corp and served until 1945.

She married Lawrence A. Frye on October 20, 1946. They resided in P.G. County from that time on. She lived in Beltsville for the last 28 years. During that time she served as a volunteer in the reading lab at Beltsville Academic Center.

She is survived by 3 children, 8 grandchildren 14 great-grandchildren and 3 step-great-grandchildren.



Would you be smiling if this happened
to your eyeglass frame?

Yes, if you wear frames made from Flexon.

Hours: Tues. & Wed. - 9am - 7pm
Thurs. & Fri. - 9am - 6pm
Sat. - 10am - 2pm
Sun. & Mon. - CLOSED

FLEXON
by MARCHON

Brewer & Marshall, Inc. Opticians
10490 Baltimore Ave. • Beltsville, MD 20705
301-937-3677

© 1998 Flexon® is a registered trademark of Marchon Eyewear, Inc.



Check us out on Facebook! The Beltsville News

Rosapepe's Report to Beltsville

Join me and my wife, Sheilah—Sunday, January 14—to welcome 2018!

I hope you can join my wife, Sheilah, and me for our Welcome 2018 Celebration on Sunday, January 14, from 11:30 to 2:00 at College Park Academy, 5751 Rivertech Ct, Riverdale. Families are welcome. Please RSVP soon at www.SenatorJimRosapepe.com. We look forward to seeing you!

Energy assistance grant funds available to low-income households

The state of Maryland is taking steps to ensure Marylanders will no longer have to choose between keeping warm and meeting their other expenses. Depending on your household income, you could be eligible for a grant of more than \$1,000 per year to assist in paying heating and electric bills. Annually, more than 100,000 households across the state enroll in the program.

Households can qualify regardless of participation in other state benefits programs. Residents can apply for benefits on an annual basis, with each grant year starting July 1 and concluding on June 30



Senator Jim Rosapepe

of the following year. Households may apply at any time and reapply once per year as needed. Applicants do not need to be behind on their bills to apply for help.

Interested residents should submit a completed paper application and the required supporting documents to their local energy office. To apply for assistance or get further information, customers can contact their nearest energy office by visiting dhr.maryland.gov/OHEPlocal or by calling DHR's helpline at (800) 332-6347. Households can also apply online at dhr.maryland.gov/benefits.

Op-ed with Gov. Glendening: How the University of Maryland embraced smart growth

I thought you might be interested in this column published by *Next City*, the national blog on smart growth. Former Governor Parris Glendening and I tell the story of how, under President Wallace Loh, the University of Maryland embraced smart growth policies championed for decades by local residents (and elected officials)—and leaped into the 21st century. Visit senatorjimrosapepe.com/op-eds/UMDpublictransit to read it.

State Legislative Session Starts January 10

Delegates Barbara Frush, Josefine Peña-Melnyk, Ben Barnes, and I will be back in Annapolis representing you in the 2018 Maryland legislative session starting on January 10.

Please let us know your opinions on issues of concern and contact us with any questions. Moreover, of course, feel free to be in touch if the delegates or I can help you. Just email 21stDistrict-Delegation@gmail.com or call 301.858.3141.



Bonnie Bartel

301-343-8887

Call, Text or Email me for an appointment

Bonsnobun@aol.com

Image Hair n Things

10611 Montgomery Rd
Beltsville, MD 20705

GO CONTRACTORS GROUP LTD



*Kitchens
Bathrooms
Basements
Decks*

*Painting
Additions
Sun Rooms
Enclosures*

*All Work Guaranteed
Licensed Bonded Insured*

We have 30 years of experience and in addition to the above, we do concrete, brick, and stone work.

No Job is too small

Maryland Home Improvement License

Website www.gocontractorsgroup.com

Nestor Gomez e-mail gocontractors@aol.com

240-274-4670 (Cell)

Club News

The Beltsville Garden Club

The Beltsville Garden Club will meet on Wednesday, January 24, 2018, at 7:30 pm in the multipurpose room of the Duckworth School, 11201 Evans Trail, Beltsville, MD.

Please join us for a program titled Members' Talk: Mosses to Wildlife Gardens and Photos of Past Club Trips. Members Sandy Lange will share with us her visit

to a Japanese moss garden, Victor Laczko will share photos of a wildlife friendly garden, and Mary Clive will take us on a photo tour of past Beltsville Garden Club visits to the gardens and arboretums.

The public is welcome, and admission is free. You are encouraged to bring something to exchange: a plant, cutting, or garden tool or magazine. Bring something, take something! Refresh-

ments will be served after the talk.

In case of inclement weather, the club follows the Prince George's County School system schedule.

To learn more about the Beltsville Garden Club, visit www.beltsvillegardenclub.org or like us on Facebook: www.facebook.com/beltsvillegardenclub.

The Beltsville Young at Heart Club

By Barbara Schofield

The Beltsville Young at Heart Club was sad to hear that Baker Bill had passed. He was a guest speaker at the club quite a few years ago, and we enjoyed his storytelling a lot.

Our new officers for the upcoming year, 2018, are Lois Hamilton, president; Jim Pope, vice president; Richard Moore, secretary; Barbara Victor, treasurer;

Judy Dillon, assistant secretary; and Maria Hille, chaplain.

Our last trip to Lancaster, PA, to see a Christmas show was delightful. A luncheon at the Hershey Farm Restaurant was delicious. We had time to shop in the gift shop as well. Those of us at the Beltsville Young at Heart wish everyone a happy and healthy New Year.

Share Your News!

Send your article submissions to News Director
Rick Bergmann at editorbvnews@gmail.com

OPEN HOUSE

Tuesday, January 30, 2018 | 8:30 to 11:30 am



*St. Joseph's RCS: Building the foundation
for thinkers and believers*

**Come discover
St. Joseph's Regional
Catholic School!**

**ST. JOSEPH'S
REGIONAL
CATHOLIC
SCHOOL**
Beltsville, Maryland

serving students and their families in PreK4- 8th grade

11011 Montgomery Road, Beltsville, MD 20705

- Discover our comprehensive curriculum that develops the mind, body, and soul of each child.
- Discover our small environment that catapults students to score in the top 17% nationally in Reading and Math.
- Discover our diverse student body representing 32 countries & 22 languages.
- Discover the strength of our Catholic identity & nationally-recognized student-driven commitment to community service initiatives.
- Discover our growth mindset learning approach where our students' abilities are forged through discipline, hard work & perseverance which fosters a life-long love of learning.

**For more information please call 301-937-7154
or visit our website: www.stjosrcs.org**

ROLEN
HEATING AND AIR CONDITIONING
LICENSED • BONDED • INSURED



SERVING: CALVERTON, MONTGOMERY & PRINCE GEORGE'S COUNTIES
"DAY & NIGHT EMERGENCY SERVICES"

Pest Patrol

Residential and Commercial Pest Control (Including Termite Services)

Cheryl Scruggs
(301) 775-9638
Kelvin Scruggs
(301) 775-6169



Got Bugs-Call Scruggs

*Discounts 5% : 1st Time customers, Military and Seniors

Audiology Unlimited and College Park Hearing Services

Audiologist: Your Best Hearing Aid

Audiology Unlimited

1400 Forest Glen Rd, #315
Silver Spring, MD 20910
301-754-0085
or
5749 Crain Highway
Upper Marlboro, MD 20772
301-780-6770

Hear Better,
Live Better



Dr. Kathy Molitz,
Audiologist

College Park Hearing Services

7305 Baltimore Ave, #202
College Park MD 20740
301-277-2100

Most
Insurances Accepted



**Audiologists
Do It Better.**

Club News

College Park Post and Unit #217 Welcome the New Year

By Ivy Christoffers

What a busy and joyous time December has been this year. We have been all over the state holding Christmas gift shops for our hospitalized veterans. These took place at Perry Point, VA; Baltimore, VA; Loch Raven, VA; and Charlotte Hall Veterans Home. We were also pleased to help fill hundreds of backpacks at Washington, VA, and Martinsburg, VA, for patients. The American Legion Auxiliary shops for hundreds and hundreds of nice gifts, ranging from appropriate gifts for infants to our elder citizens; sets up a mock shopping mall at the hospitals; and assists veterans in choosing gifts for their loved ones, all at no cost to the veterans. The gifts are then wrapped in lovely paper, ribbons, and bows to be presented by the veterans to their families and loved ones. We then hold special holiday parties at Washington, VA, and Perry Point, VA, as well as a special ice cream social at Charlotte Hall Veterans Home. These have been annual events of the American Legion Auxiliary for more than 75 years.

We are pleased and honored to serve our valiant heroes and assist them in providing holiday cheer to their families. We also must give thanks to our young ROTC and JROTC Cadets who help at many of these gift shops by escorting or pushing wheelchairs while they assist the veterans shop. It is heartwarming to see our younger citizens so involved with volunteering to brighten the lives of our most deserving citizens.

We, the members of College Park Unit #217, held our holiday luncheon at the Bistro Restaurant in Beltsville. A great time was had as we enjoyed fun and fellowship, played some interesting games,

and remembered some great Christmas memories from past years. We were pleased that one of our members who has been deployed with FEMA to the hurricane-ravaged areas of Alabama and Florida, Veronica Looney, was back to join in the fun. She says she is still somewhat exhausted by her ordeal but happy to be home. We are very proud of her commitment to her country and its citizens. She is a veteran who continues to serve.

Ronnie Dove and Cameron held their annual Christmas party on December 17 and will be back entertaining in our lounge on December 30. If you did not get the chance to enjoy this past appearance, come out on the 30. It may be a safer night than New Year's Eve. We promise you a fantastic time. Call Tina Zook for tickets at 301.935.5308.

Remember that if you are planning an event that will require renting a hall, College Park Post #217 has just what you need: a great chef, Chef Brian; an experienced coordinator, Gary Kingery; and a great catering crew, the members of College Park Unit #217 who love to serve you. We joyfully served three catering events in December.



Pictured above, singing a duet at the December 17 annual Christmas Party held at College Park American Legion Post, are College Park Unit #217 President Ivy Christoffers and Cameron, one of the entertainers accompanying Ronnie Dove

We continue to hold our Big Bingo every Tuesday and Wednesday at noon, our Friday night dinner dances beginning at 5:30 pm, and now we have shotgun bingo on Monday nights. Our Sunday football dinners will soon be over, but we will find something to fill the void. We have something for everyone, so come on out and see what you would like to get involved with.

Let us pray that 2018 will see more of our troops coming home. As they are still pursuing their hopes of peace around the world, let us keep them in our prayers. May God continue to bless America, the land of the free because of the brave.

Seasonal Grace

'Neath the Springtime's sunny warmth,
New flowers bud each day
Decorating naked arms
In rainbow-like array.

Summer garments change to green
With rich and varied shades
Covering majestic'ly
Hills, vales, and mountain glades.

Soon the cooling Autumn breeze
Turns over ev'ry leaf,
As prismatic wonders sheathe
All branches of the trees.

Shaking off these colored clothes
Bare timbers beg the skies,
Beckoning with fingered boughs
For new gowns to arrive.

Winter jewels of glist'ning white
Fall gently to caress
Fragile limbs until their light
Shines brightly from each dress.

Nature's wardrobe makes God known;
We glimpse His glorious face
By the beauty He has sewn
Into each season's grace.

Beckie Hutchings
12/13/2017

**FREE
Delivery**

*Certain Restrictions Apply
See store for details

**Beltsville
PHARMACY**

SAVE!
We are less expensive
than all the chain
pharmacies!!!

We're YOUR community pharmacy. Come on in and
meet Rakhi YOUR neighborhood Pharmacist.

- Fast, Friendly Service
- Free RX Deliveries
- Personal Support
- RX Price Matching
- Lg. Selection of Quality Goods & Products

301-595-5939

www.beltsvillepharmacy.com

10820F Rhode Island Ave. • Beltsville

Across from the Post Office

**\$20
Flu Vaccine**

**Orndorff
& Spaid
Inc.**

ROOFING Over 60 Years!



MAKE ROOFING the career for you...

JOIN OUR TEAM of experts who are respected as one of the top commercial roofing contractors for the last 60 years.

- ✓ **Want to learn a skilled Profession?**
Become a skilled roofing applicator in the field of built-up, single ply or sheet metal.
- ✓ **Prefer working outdoors?**
Avoid the hassles of a cramped office and having to wear a suit and tie.
- ✓ **Looking for a career that offers both challenge and variety?**
Work all over the metropolitan area on many different types of office buildings, schools & shopping centers.
- ✓ **Like to take pride in your work?**
Nothing beats driving by a local landmark knowing that you worked on that job
- ✓ **Excellent benefits.**
Health insurance
Life insurance
Long/short term disability
Retirement Plan
Vacation Package
- ✓ **One of the nation's top installers of commercial roofing & sheet metal.**
We are proud of our quality work throughout the metropolitan area. We have worked on some of the area's most prestigious projects.
- ✓ **Family Owned Business.**
Were in our second generation and have the philosophy that our business will continue for many more generations to come.

✓ **Stop by or call us when you're ready to start your career.**

301-937-5911

**Roofing and Sheet Metal Co.
11722 Old Baltimore Pike,
Beltsville, MD 20705**

www.osroofing.com

The Women's Community Club of Beltsville

The Women's Community Club (WCCB) of Beltsville participated in the annual Make a Difference Day by planting bulbs at the Beltsville Neighborhood Park. This year, we planted daffodil bulbs in front of the benches in the park. We also cleaned up Montgomery Road as our Adopt-A-Road program.

The WCCB has many activities planned for the year and is always interested in new members if you would like to help make Beltsville a better place to live. Our projects include Holiday food and gift baskets, a college scholarship, the Adopt-A-Road program, and the Teacher's Appreciation Breakfast as well as other important work. This year, we provided a Thanksgiving meal for needy families of Beltsville. At Christmas, we not only provided a holiday meal, but we also provided presents for the children. We hope you can assist us in these worthwhile endeavors. You can contact us at WCCBeltsville@gmail.com for further information.



Members of the Women's Club of Beltsville are making a difference!

MUSICAL

continued from page 1

Each year, the pack has activities such as camping, hiking, our annual pinewood derby, and campfires all year long. We also do participatory citizenship along Little Paint Branch Trail, our toy drive, and Scouting for Food. Along the way, we learn

responsibility, play games, and have tons of fun. Next year, the pack be opening our unit to families with girls who are interested in participating in Cub Scout fun. If you are interested in discovering the fun of Cub Scouts with your child, please contact Regina Halper at Pack1031CubScouting@gmail.com for more information

Spelling Bee Competition and Latin Club comes to Beltsville

St. Joseph's Regional Catholic School has expanded its opportunities for local students to participate competitively at the national level through the addition of Latin classes, Prefix and Suffix Challenge, and the Spelling Bee competition. Since November, students enrolled in grades 5-8 have been able to explore Roman culture and language in the weekly after-school **Latin class**. According to research studies, students who study Latin benefit significantly from the program as approximately two-thirds of the English language is derived from Latin. Therefore, it provides invaluable insights into the English vocabulary and is associated with developing critical thinking, enhances problem-solving abilities, and students gain an advantage in learning other romance languages such as Spanish, French, Italian, and Portuguese; as well as other inflected languages such as Russian and German.

Over sixty-three students ranging from pre-kindergarten

through eighth grade also signed up to participate in the monthly **Prefix and Suffix Challenge**. The challenge aims to improve the vocabulary of students by exposing them to common prefixes and suffixes used in the English language. Students have to learn at a minimum, five new words each month and are assessed on their ability to recall both newly and previously learned shortcuts each month to advance to the next round. By the end of the competition, students will be exposed to 47 prefixes and suffixes which will help them to be able to decipher the meaning of over 500 English terms!

On January 11, 34 students enrolled in grades 5-8 will also be able to participate in the school's **Spelling Bee competition**. The winner will be advancing to the Prince George's County Annual Spelling Bee competition to be held in March.

For more information, please visit www.stjosrcs.org or call (301) 937- 7154 or email secretary@stjosrcs.org.

Arden Courts of Silver Spring is proud to participate in the

Alzheimer's Foundation of America's National Memory Screening Program

Every Monday of the Month

Scheduling from 2:00 pm to 4:00 pm

Call (301) 847-3051 or email SilverSpring@arden-courts.com to schedule your appointment for a **FREE, confidential memory screening**.



*A memory screening is not used to diagnose any illness and does not take the place of evaluation by a qualified healthcare professional.

- Are you caring for a loved one who is experiencing memory problems?
- Are you concerned that your loved one's memory loss may be an early sign of dementia?
- Does Alzheimer's disease or dementia run in your family?
- Are you concerned about your own memory?

A memory screening is a series of questions and tasks designed to gauge memory, language and thinking skills. Screenings last just 5-10 minutes, and while the results are not a diagnosis, scoring below the normal threshold can signal that someone should follow up with a clinician for a full evaluation.



2505 Musgrove Road
Silver Spring, MD 20904
(301) 847-3051
SilverSpring@arden-courts.com



Arden Courts 
Memory Care Community

Beltsville Seventh-Day Adventist Church Presents Christmas Cantata

Beltsville Seventh-day Adventist Church's Christmas celebrations featured a cantata presented twice on Saturday, December 16. It was the church's worship service that day; the church routinely worships on Saturdays, a day it calls "Sabbath."

A 20-voice choir presented the cantata, accompanied by a 15-piece orchestra. Director Sheri Clemmer has produced a Christmas cantata at the church each year for seven years. *Invitation*



The Adventist Church Choir performs its annual Christmas cantata.

A First for the Beltsville Seventh-day Adventist Church

For the first time ever, the Beltsville Seventh-day Adventist Church will hold a convocation to start its worship year. The church has two campuses, and they will meet together for the first time as well. The convocation is billed as a time to "celebrate God's blessings in 2017 and our commitment for 2018."

The convocation is January 6, starting at 10 am, in the auditorium of the Seventh-day Adventist Church's world headquarters office on Old Columbia Pike. The new venue is necessary in order to accommodate the number of people who attend; the church normally holds three services each week.

"We have services at 9:30 and 12:00 at the Ammendale campus," said Lead Pastor Tim Madding. "We also have a service at 10:45 at our Tech Road campus." All services are on Saturday, the Adventist Church's day for worship.

Madding called the event "the next step in our growth as a church." The church started the two campuses 16 months ago. "This is reminding ourselves that we are one church," Madding said.



The Praise Team leads worship during Convocation 2017. Every year the Beltsville Seventh-day Adventist Church starts the year with a joint worship service. Every other week of the year, the Ammendale campus and the Tech Road campus meet in separate locations. This year's Convocation is January 6 at the world headquarters office of the Adventist denomination, on Old Columbia Pike.

The church is beginning to lay plans to start a third campus.

Special guests at the convocation include both Montgomery and Prince George's County representatives, leaders from the Beltsville community, as well as leaders from the world headquarters and regional headquarters offices of the Seventh-day Adventist

Church. Community members are welcome as well.

to a Miracle had songs about Jesus' birth, the reaction of Mary to news that she would have a baby, a Celtic cradle choral song, and the title song "Would I Miss a Miracle?" Featured soloists were Marvene Baptiste, Milca Pabon, and Kryselles Craig. Lead Pastor

Tim Madding and his wife Andrea narrated the cantata. The choir also presents a cantata during the Easter season each year as well.



8208 MANDAN CT, GREENBELT, MD 20770
Features two level End Unit Townhouse with 3 Bedrooms, 2.5 Bathrooms, Eat-in Kitchen, Separate Dining Room, Custom Deck, New Roof, New HVAC, and much much more.



Congratulations to the Mr. and Mrs. Ohiri and Family of Beltsville on the Purchase of their Brand New Home! It was my pleasure and honor to serve as their listing and selling Real Estate Agent!



BRAND NEW LISTING
479,900
6301 SOUEID STREET
UPPER MARLBORO, MD 20772
Must See this Exquisite Home featuring 6 possible Bedrooms, 3.5 Baths, Spacious Eat-in Kitchen with Morning Room! Enormous Master Suite with Sitting Room, plus 3 Closets, Fully Finished Basement and Much Much More!

Alethea Morris - A name you can trust and results you can count on!



If it is important to you, then it is important to me!
Alethea Morris
Fairfax Realty Inc.
10210 Greenbelt Road #120
Lanham, MD 20706
240-305-4893 (direct)
301-794-9400 (office)
AletheaYourRealtor@gmail.com



**IF IT'S
REAL ESTATE,
IT'S
ROBERTA!!**



ROBERTA
301-937-3124

Experienced, Reputable • Distinguished Sales Club
Full time professional • CRS, GRI, SFR • Associate Broker

E-mail: robertayaklich@gmail.com • 301-262-1700



SUPER BUY!

4 BDRM (2 huge ones) 2 BA, 2 fireplaces, separate dining room, unfinished basement, screened porch, nice fenced yard.

\$289,900



SPECTACULAR UPDATED RAMBLER!

1,704 Sq. Ft. on each level, 4 BDRM on main level, 3.5 BA, large 2 car garage with lift, new windows, remodeled kitchen and baths.

\$384,900

Wishing You and a Wonderful, Healthy, and Happy New Year!



"Make Deller Your Seller"
Bette Deller, CRS, GRI, SRES
Long & Foster Real Estate, Inc.
bette.deller@longandfoster.com
www.bettedeller.com
301-384-8700 (Office)
301-257-5852 (Cell)

Call Me



Beautiful and spacious 2BR, 2BA condo for active adults over the age of 55 in Central Parke at Victoria Falls in Laurel, MD. Elevator building. Many nice features and amenities.
PG10069032 \$283,000

This is not intended to solicit currently listed properties.

Looking for a New Retirement Home in the New Year?
How About This One?



AREA EVENTS

Please contact the individual facilities regarding late changes or updates to hours of operations, especially during holidays or inclement weather.

MONTPELIER MANSION & ART CENTER

9650 Muirkirk Rd., Laurel, MD 20708. Phone: 301.377.7817. TTY: 301.699.2544. E-mail: montpeliermansion@pgparks.com. Contact the Art Center at 301.377.7800 regarding art and photography classes. Self-guided tours of the mansion: Thur. – Tue. from 11 a.m. to 3 p.m. Cost: \$5/adults, \$4/seniors, \$2/children ages 5 – 18, free/ages 4 and under. **The mansion is closed on Wednesdays and some holidays.** The grounds are open from dawn until dusk every day of the year and access is free of charge. Contact the Mansion for information as well as events in January.

OPENING RECEPTION, BOOK SIGNING, AND EXHIBIT

On Sat., Jan. 13, there will be a talk and book signing by the artist and author from 3 p.m. to 4 p.m., and the opening reception will run from 3 p.m. to 8 p.m. The book is **Civil War Soldiers: Discovering the Men of the 25th United States Colored Troops** by Shayne Davidson. After viewing an antique photo album of 17 black soldiers from the Civil War, artist Shayne Davidson researched, created a family tree, wrote a biography, and drew a life-sized, colored pencil portrait of each man. The result is now a book and exhibit of the same name. The exhibit from the book begins on Fri., Jan. 12 and will continue through Sun., Mar. 11. Open the same days and hours as the mansion. Free with regular admission.

COLLEGE PARK AVIATION MUSEUM

1985 Cpl. Frank Scott Dr., College Park, MD 20740. Phone: 301.864.6029. TTY: 301.699.2544. Regular hours of operation are 10 a.m. to 5 p.m. daily, except for most major holidays and some special events. Cost: \$5/adults, \$4/seniors, \$2/children, free/age 1 and under. See CollegeParkAviationMuseum.com for more information as well as events for January.

AIRCRAFT ON DISPLAY

There are 10 aircraft in the main gallery. The museum features original, preserved, restored, and reproduction aircraft. The aircraft are displayed in chronological order starting with the 1910 Wright Model B reproduction and ending with the 1946 Ercoupe 415D.

LAUREL-BELTSVILLE SENIOR ACTIVITY CENTER

Holiday closings: 1) Mon., Jan. 1, and 2) Mon., Jan 15. Regular hours of operation: Mon. – Thur. from 8 a.m. to 9 p.m., Fri. from 8 a.m. to 5 p.m., Sat. from 8 a.m. to 2 p.m., closed Sunday. Address: 7120 Contee Rd., Laurel, MD 20707, around the corner from the Laurel Regional Hospital. Phone: 301.206.3350. Fax: 301.206.3387. TTY: 301.446.3402. Contact the center regarding classes and events for January. Membership is free for Beltsville residents who are age 60 or older.

AUDITIONS FOR SINGING SENIORS ON STAGE

Fri., Jan. 5 from 9 a.m. to 3 p.m. Advance registration is required. For

information call 301-446-3400. The production will be in April.

SENIOR FRIENDSHIP CLUB

Friendship Club regular office hours are Mon. – Fri. from 10 a.m. to 12:30 p.m. Phone: 301.206.3380. The monthly meetings and luncheons take place on the second Wednesday of each month. The meeting for January will take place on Wed., Jan. 10 at 10:30 a.m. We will have a speaker discussing *Five at 55: The Five Important Documents Seniors Need After the Age of 55*. Sign-up and pay for the luncheon by Wed., Jan. 3. Also, we are planning several trips in 2018, including a cruise, casinos, and dinner theaters. For more details, call the office.

THURSDAY MOVIE MATINEE

The featured movie for Thur., Jan. 11 is *St. Vincent* and Thur., Jan. 25 is *Gifted*. Start time is 10 a.m. and the end time is about 12 noon. Popcorn will be provided. Cost: free.

NATIONAL WILDLIFE VISITOR CENTER

Holiday closures: 1) Mon., Jan. 1 and 2) Mon., Jan. 15. The center may also close early the day before each holiday. Call the center for updates.

Address: 10901 Scarlet Tanager Loop, Laurel, MD 20708. The entrance is accessed from Powder Mill Rd. between the Baltimore–Washington Pkwy. and Rt. 197. Main phone: 301.497.5772. For directions and more information, see <https://www.fws.gov/refuge/Patuxent/visit/directions.html>. Regular hours of operation for the Visitor Center are: Fri. – Wed. from 9 a.m. to 4:30 p.m., closed Thursdays. Regular hours of operation for the trails and grounds are: Open daily from sunrise to sunset, except for federal holidays. Cost: Free admission to the Visitor Center and its exhibits, grounds, and trails; other activities and events are free of charge if not noted. Space in public programs is limited. *Registration is by phone only and is required unless otherwise specified* — call 301.497.5887. Note: These public programs are designed for individuals/families. **Programs are subject to changes or cancellation due to weather or low participation.** Please advise us of any special needs so that we may accommodate you.

HUNTING SEASON

Selected sections of the refuge are closed for hunting until the end of January. Please check at the front desk for more information and to get a map.

HOLLINGSWORTH ART GALLERY

The featured artists for January are the staff of the Patuxent Research Refuge. The gallery is open when the Visitor Center is open. *Registration is not required.* All ages.

WILDLIFE IMAGES BOOKSTORE & BLUE GOOSE PASSPORT

The bookstore is open from 11 a.m. to 4 p.m. on the days that the Visitor Center is open. Free stamps for the recently updated Blue Goose Passport for the National Wildlife Refuge System are available. Extra copies of the passports are for sale.

JANUARY 2018

Calendar of Events

SCREECH & KESTREL

Saturdays, Jan. 6, 13, and 20 in **English** and **Sat., Jan. 27 in Spanish and English**. Time: 1 p.m. to 2 p.m. each day. All ages. *No registration required.* Meet two of North America's smallest birds of prey: the American kestrel and eastern screech owl. Both are expert hunters. The American kestrel uses its acrobatic prowess, while the eastern screech owl is a stealthy silent hunter.

NATURE TOTS: IN THE TREETOP

Two sessions on Tue., Jan. 9: 1) 10:30 a.m. to 11:30 a.m., and 2) 2 p.m. to 3 p.m. Ages 3 – 4. Trees are very special homes to many different kinds of animals. Introduce your preschooler to this wonderful habitat through games, stories, and crafts in this fun, interactive program.

NATURE SONGS WITH STINA

Sat., Jan. 20, 2:00 – 2:45 pm All ages, Parent participation required. Join nature troubadour Stina for an afternoon indoor campfire sing along in our auditorium. Get your groove on with fun and silly nature songs!

ALL THAT HABITAT

Mon., Jan. 22 from 10:30 a.m. to 11:30 a.m. Ages 5 – 7. Learn about what wildlife — and people — need to survive.

TINY TOTS: NATURE AND MUSIC

Mon., Jan. 29 from 10:30 a.m. to 11:15 a.m. Ages 16 – 48 months. **Parental participation required.** Learn about wildlife at the refuge through fun and interactive songs, stories, and activities.

BELTSVILLE EVENTS

Please contact the individual facilities regarding late changes or updates to hours of operations, especially during holidays or inclement weather.

NATIONAL AGRICULTURAL LIBRARY (NAL)

Free and open to the public. Regular hours of operation are Mon. – Fri. from 8:30 a.m. to 4:30 p.m., except for federal holidays. The library is located at 10301 Baltimore Ave., near Sunnyside Ave. Parking is free. Main phone number: 301.504.5755. NAL is on Twitter at http://twitter.com/#!/National_Ag_Lib. See NAL.USDA.gov/visit-library for more information.

DIGITAL EXHIBITS

NAL offers online, digital exhibits that are free of charge. There are previews and links to more detailed information. See NAL.USDA.gov/exhibits. Titles include:

- *Frost on Chickens*. The poet Robert Frost lived and worked as a poultry farmer in Derry, New Hampshire from 1900 to 1909. During that period he published a dozen articles for two trade journals: **The Eastern Poultryman** and **The Farm-Poultry**. NAL holds copies of these publications and other relevant materials on poultry farming which give context to Frost's articles.
- *Mailboxes, Mom and Pop Stands, and Markets: Local Foods Then and Now*. The exhibit contains both historical and current materials. It is divided into three

main sections: A review of the Farm-To-Table movement of the early 1900s, a survey of Roadside Stands and Farmers Markets, and a list of current USDA local food initiatives identified by the Know Your Farmer, Know Your Project.

- *Apron Strings and Kitchen Sinks*. The exhibit contains historical materials related to the USDA's pioneering unit of The Bureau of Home Economics, especially the work related to clothing and kitchen design. It was the first major unit to have been headed by a woman: Louise Stanley, Ph.D.
- *How Did We Can? The Evolution of Home Canning Practices*. The exhibit contains both historical and current materials. Home canning in the United States made a pronounced appearance during World War I, maintained a steady following through the Great Depression, peaked during World War II, suffered a substantial decline after the war, and has been regaining popularity since the 1970's.

VANSVILLE HEIGHTS CITIZENS ASSOCIATION

Mon., Jan. 8 at 7 p.m. Meetings are held at the Franklin Brown Recreation Community Center, 1733 Old Baltimore Pike, Beltsville, MD 20705 (located in the Vansville Park). The association meets on the second Monday of each month.

BEHNKE NURSERIES GARDEN CENTER

11300 Baltimore Ave. Please call 301.937.1100, ext. 0 or see Behnkes.com for more information and events for January.

BEGINNER HANDS-ON BONSAI CLASS

Sat., Jan. 6. from 2 p.m. to 4 p.m. Bonsai takes gardening to a whole new level. Now gardening becomes an art form. If you like the idea of gardening in miniature, then this may be for you. Just keep in mind, patience is a necessity. Bonsai gardening takes years to master because your subjects take that long to mature, but it is well worth the wait as you watch your sculpture grow. This is a fully inclusive class. Registration required. Cost: \$65, includes all materials.

BELTSVILLE LIBRARY

Holiday closures: The library will be closed 1) Dec. 31, 2017 through Tue., Jan. 2, 2018 and 2) Mon., Jan. 15, 2018. Address: 4319 Sellman Rd., Beltsville, next to the police station. Main phone number: 301.937.0294. Regular hours of operation are Mon. – Tue. from 1 p.m. to 9 p.m., Wed. – Fri. from 10 a.m. to 6 p.m., Sat. from 10 a.m. to 5 p.m., closed Sundays. Visit our library system website at www.pgcmis.info to check for weather-related closings and to use our online library services.

PROGRAMS FOR CHILDREN AND FAMILIES

CHESS CLUB

Tuesdays, 4:30 p.m. to 7 p.m. Drop in to learn to play or improve your game. All ages welcome: children, teens, and adults.

READY 2 READ PRESCHOOL STORYTIMES

Wednesdays at 10:30 a.m. Ages 3 – 5.

READY 2 READ TODDLER STORYTIMES

Wednesdays at 11:30 a.m. for ages 2 – 3 years old.

READY 2 READ BABY STORYTIMES

Thursdays at 10:30 a.m. and at 11:15 a.m. Ages birth – 2 years old.

KIDS ACHIEVE CLUB

Mondays from 5 p.m. to 7 p.m.; *closed Mon., Jan. 15*. Free homework help and reading practice for students in grades 1 to 6.

STEM FOR FAMILIES: THE SCIENCE OF SOUND

Wed., Jan. 3 from 4 p.m. to 5 p.m. See a video on the science of sound and make your own

TAIL WAGGIN' TUTORS

Two sessions: 1) Tue., Jan. 16, from 3:30 p.m. to 4:30 p.m.; and 2) Sat., Jan. 20, from 2 p.m. to 3 p.m. Children read to a dog and gain confidence reading. Ages 5 – 12. For information, call or visit the branch.

PROGRAM FOR ADULTS

ENGLISH CONVERSATION CLUB

English Conversation Club for Adults resumes on Wednesdays from 10 a.m. to 11:30 a.m., starting with Wed., Jan. 10. Practice speaking English in a friendly environment.

BELTSVILLE COMMUNITY CENTER

Address: 3900 Sellman Rd., Beltsville. Phone: 301.937.6613. Spanish line: 301.445.4509. TTY: 301.445.4512. Regular hours of operation are: Mon. – Thur. from 9 a.m. to 9 p.m., Fri. from 9 a.m. to 7 p.m., Sat. from 9 a.m. to 4 p.m., closed on Sunday. Hours of operation for Xtreme Teens and Pre-teens: Fri. – Sat. from 7 p.m. to 10 p.m. Contact the center regarding events for January.

BELTSVILLE YOUNG AT HEART CLUB

Join us at the Beltsville Young at Heart Club on the 1st and 3rd Thursday of each month at 11:15 a.m. Members must be at least 55 years old. Visit us three times and become a member. We have speakers, entertainment, trips, 50/50, bingo, plus light refreshments. Questions: call Lois at 301.498.9736.

STRATEGY GAME CLUB

Mondays from 7 p.m. to 9 p.m. Enjoy board games, strategy games, and tons of fun. All skill levels welcome. Any game can be played as well as brought to the club to be played. Cost: free. All ages.

XTREME TEENS AND PRE-TEENS REGULAR EVENTS

Fridays from 7 p.m. to 10 p.m. Free with valid Center ID card. Ages 10 – 17.

VANSVILLE COMMUNITY CENTER

Address: 6813 Ammendale Rd., Vansville. Phone: 301.937.6621. Fax: 301.937.6623. Spanish line: 301.445.4509. TTY: 301.445.4512. Regular hours of operation: Mon. – Thur. from 9 a.m. to 9 p.m., Fri. from 9 a.m. to 7 p.m. (except for Xtreme Teens), Sat. from 9 a.m. to 4 p.m., Sun. from 12 noon to 4 p.m. Hours of operation for Xtreme Teens: Fri. – Sat. from 7 p.m. to 10 p.m. Contact the center regarding events for January.

XTREME TEENS AND PRE-TEENS REGULAR EVENTS

Fridays from 7 p.m. to 10 p.m. Ages 10 – 17. Free with valid Center ID card.



Baker Bill@Riderwood

Unfortunately, this will be Baker Bill's final article in *The Beltsville News*—written by his children Steve, Wendy, and Jane. Baker Bill passed away on Thanksgiving morning from complications following a stroke. To honor his memory, his love for the Beltsville community, and the many followers of *The Beltsville News*, we are writing a final article to pay tribute to our dad.

Baker Bill opened shop in Beltsville in 1964. The bakery was the first store open in the Chestnut Hills Shopping Center, and the first store burglarized that night. The empty cavity next door (Neil's Cleaners) made for easy access for someone breaking through a layer of drywall separating the stores, making a mess of the bakery, and stealing about \$30 in change. The bakery survived, the landlord sealed the cavity, and the community of Beltsville supported the bakery with open arms for over 50 years and counting!

When your father owns a bakery, you become an employee as soon as you are tall enough to see over the counter with a little step stool behind the register so you could ring up sales. We all worked in various roles throughout the years as store clerks, cake decorators, bakers—and of course—workers on the dreaded scullery duties. Some of the fondest memories of the bakery revolved around the holidays, working around the clock to make sure everything was fresh for the holiday dinner table. For Thanksgiving alone, Raulin's made an average of 700 assorted pies and 12,000 dinner rolls for the holiday feast. Christmastime was more cookie intensive, making thousands of handmade stars, bells, Christmas trees, and Santa almond cutout cookies, along with thousands of butter tea cookies packaged nicely for quick sales.

In 1980, Baker Bill wanted to try something new and sold the bakery to me, Steve. I had just graduated from the University of Maryland and brought in a partner to help share the responsibility of owning a small business. Larry

was a marketing expert, opened new doors to the effects of proper advertising, and was a great support person when the bakery needed some labor assistance. However, Larry's calling was in Southern California, so after several years, he left to pursue other sunny dreams. With the help of my sister Jane, who designed a new store layout and color theme; my sister Wendy, who developed a web presence; and my wonderful wife, Kenzie, who designed the logo and all the graphics; we took the bakery to a whole new level.

My absolute favorite memory of the bakery was each year on Thanksgiving Day when I would invite family and friends to experience the everyday life of a baker. Starting at 5:30 am, we made doughnuts, pastries, rolls, and a few pies, then opened for business to sell the products. All the kids worked the register, collecting donations for the products sold, and everyone who helped got to take home anything that was left. After closing, we all went down to Wells Ice Rink and played a fun game of broomball. To this day, everyone who participated being a "baker for a day" said it was one of the best experiences they have ever had.

On a personal note, our dad, Baker Bill suffered a massive stroke to the left side of his brain, which affected his speech, his movement on the right side of his body, and his ability to swallow. After three days in the hospital, dad was able to regain some movement in his right arm and incoherently mumble a few words, but he still couldn't swallow anything. The doctor approached us and said the only way to keep him alive was to insert a feeding tube and that he would probably remain bedridden for the rest of his life. Our dad had the foresight to write out advance directives (a living will) that specified his wishes if he was unable to communicate them. In his advance directives, he absolutely did not want to remain alive using a feeding tube, and this one wish made our tough decision eas-

ier. Dad passed away peacefully on Thanksgiving morning and was buried with full military honors at the Maryland Veterans Cemetery. Life offers no guarantees, and I urge every parent, no matter your age, to go online and complete a free advance directive form. Be sure to make several copies, give a copy to each of your adult children, keep one for yourself, and finally, give one to your healthcare provider. It can make tough emotional decisions bearable for your love ones.

Baker Bill had a unique style of sharing his thoughts in *The Beltsville News*. He truly enjoyed writing for each of you every month and looked forward to receiving feedback and questions. His website, www.bakerbill.net, will forever be up and running with all of his recipes, directions, and tips,

BAKER BILL
continues on page 14



Cross Creek Apostolic Church

12511 Old Gunpowder Rd Spur
Beltsville, MD 20705

Phone: 301-498-6006 - Website: www.aupc.org

Sunday Service

Adult Sunday School 9 am
Praise & Worship 10 am
Children's Ministry 10 am

Thursday Service

Adult Bible Study 7 pm
Youth Ministry 7 pm
Kids' Power Hour 7 pm
Discipleship Class 7 pm
Search for Truth 7 pm

QUEEN'S CHAPEL UNITED METHODIST CHURCH

7410 Old Muirkirk Road, Beltsville, MD 20705

The Reverend William E. Butler, Senior Pastor



YOU ARE INVITED TO WORSHIP WITH US ON SUNDAYS AND DURING THE WEEK

Sunday Worship Celebration begins at 10:00 a.m.

Communion Service every first Sunday 10:00 a.m. Worship

Church School for all ages 8:45 a.m.; Men's Bible Class 8:45 a.m.

Weekly Prayer Service Wednesdays 6:30 p.m.

Bible Study Wednesdays 10:30 a.m. & 7:00 p.m.

"Off the Hook" Young Adult Bible Study, Tuesdays 7:30 - 9:00 p.m.

Rooms available for banquets, workshops, & conferences, long or short term rentals

Church Administrative Office - (301) 210-9038

Web Site: www.queenschapelumc.org E-mail: secretary@queenschapelumc.com

Check us out on Facebook & Twitter



Abiding Presence Lutheran Church

10774 Rhode Island Avenue
301-937-7646



Sunday Worship: 9:30 a.m.

Rev. Jongkil Na

www.APLChurch.org

Come and Join Us

Located in the Beltsville Professional Center

BAKER BILL

continued from page 13

and we will update it periodically with new recipes and information as well.

Closing phrase of the month: Take a chance! All life is a chance. The man who goes farthest is generally the one who is willing to do and dare! —Dale Carnegie

Let's send you off with one final recipe:

Baker Bill's Holiday Pumpkin Pie!

Pre-heat the oven to 375 degrees, place oven shelf in the middle

Gather your stuff:

Large bowl with a wooden spoon or rubber spatula

1 – ready-made pie crust (Pillsbury or Trader Joe's)

1 – large pie pan (9" or 10")

Ingredients Needed:

1 – 15oz can of Libbey's pumpkin puree

¾ cups of granulated sugar

1 teaspoon corn starch

1 tablespoon of pumpkin spice (McCormick/Trader Joe's)

½ teaspoon salt

2 large eggs plus 1 egg yolk
whisk together with fork in a small bowl until well blended

1 ¼ cups of either half-and-half or whole milk

Simple Steps:

Prepare the pie crust in the pan and crimp the edges.

In the large bowl, add:

1 – 15oz can of pumpkin puree (scrape the can well)

¾ cups granulated sugar

1 teaspoon cornstarch sprinkled on top of the granulated sugar

1 tablespoon of pumpkin spice

½ teaspoon of fine salt

Hand mix until well blended and smooth.

Add: slowly mix the "fork-whisked" eggs until well blended

Add: slowly mix 1¼ cups of *either* half and half or whole milk until well blended. Mixture should be slightly thicker than water.

Baking Instructions: *The Hard Part!*

Fill pie shell ½ full and slowly transfer to preheated oven

With remaining filling, pour into a glass and fill the pie to the brim

Bake at 375 for 55-60 minutes

Pie will be done when you slightly lift the pie edge and the center is firm.

Continue to bake at 5-minute intervals until center is firm.

Notes:

Make this easy pumpkin pie during the holiday season and say a kind word to Baker Bill!

Remember **Bakerbill.net** for more recipes

Share Your News!


Send your article submissions to
News Director Rick Bergmann
at editorbvnews@gmail.com

Beltsville News CHURCH DIRECTORY



Holy Apostles Orthodox Church
Come and see.

A Mission Parish of the
Russian Orthodox Church Outside Russia
Located in Twin Chimneys Office Park
10760 Baltimore Ave, Beltsville, MD
Evening Vigil: Sat. 5:00 PM
Hours & Divine Liturgy: Sun. 9:40 AM
All Services in English
Fr. George Johnson, Rector
301-572-5738
www.holyapostlesorthodoxchurch.org



St. Joseph Catholic Church
11007 Montgomery Road
Beltsville, MD 20705
301-937-7183
www.stjos.org
Pastor: Msgr. Karl Chimiak
Mass: Sat. 5 pm;
Sun. 8 am, 10 am, 12 noon
St. Joseph's Regional Catholic School
Principal: Dr. Janine Bertolotti
301-937-7154



St. John's Episcopal/Anglican Church
at the corner of Route 1 & Powder Mill Road in Beltsville
(301) 937-4292
The Reverend Joseph M. Constant, Rector

Sunday Worship Schedule
Quiet service: 8:00 a.m.
Family-oriented service: 10:00 a.m.
Sunday School: 9:45 a.m.
Between September and June
Sunday Nursery - during our 10 a.m. service
Wednesday Evenings Bible Study 6-9 p.m.

*We are a beacon of Christ's love
offering hospitality and sustenance
to all on their spiritual way.*
www.saintjohnsbeltsville.org



ESL
ENGLISH AS A SECOND LANGUAGE
PROGRAMA DE INGLÉS COMO SEGUNDA LENGUA
L'ANGLAIS COMME SECONDE LANGUE
英語課程

TUESDAY, 7PM - 9PM (SEE OUR SCHEDULE ONLINE)
CHINESE BIBLE CHURCH OF COLLEGE PARK
9618 AUTOVILLE DRIVE, COLLEGE PARK, MD 20740

CLASSES ARE FREE! GRATIS! GRATUIT! 免費!
Online pre-registration is recommended, walk-in registration welcomed.
¡Las clases son GRATIS! Se sugiere que se inscriba por internet, pero también se puede inscribir en persona.
Les cours sont GRATUITS! La pré-inscription en ligne est recommandée. L'inscription sur place est bienvenue.
課程費用全免! 請從速於網站報名參加。(即場報名亦可)


GO TO: ESL.CBCCP.ORG

First Baptist Church of Beltsville (SBC)
4700 Odell Road Beltsville, MD 20705
301-937-7771 • www.fbcbeltsville.org
Keith Holland, Pastor

**Abundant Grace;
Abundant Life;
Abundant God!**

Sundays:
*Sunday School for all ages 9:45 a.m.
*Morning Worship 11:00 a.m.
Evening Worship Activities 6:00 p.m.
Adult Choir Practice 7:00 p.m.

Wednesdays:
Adult Bible Study & Prayer 7:00 p.m.
RA's, GA's, Mission Friends 7:00 p.m.
Youth Fellowship 7:00 p.m.




Emmanuel UMC
Beltsville, Maryland
A Vibrant Multicultural Church Sharing the Light of
Christ with all People
Pastor Jacob Young, PhD
11416 Cedar Lane Beltsville, MD 20705
301.937.7114 • office@eumcbeltsville.com
www.eumcbeltsville.com
www.facebook.com/groups/EUMCBeltsville/

Sunday Services:
9:00 am Contemporary Service
11:15 Traditional Service
10:15 am Bible Study & Sunday School for adults & children
Nursery Care is available for both services
Sign Language Interpretation at 11:15 service

**ARE YOU LOOKING FOR A CHURCH FAMILY THIS YEAR?
JOIN OURS! WE LOOK FORWARD TO MEETING YOU!**

For Everybody in the World,
Whatever the color of their skin may be,
Whatever their religion may be,
Whatever their situation may be,
Good health, lots of love, of possibilities
And Peace!



**FROM OUR FAMILY TO YOURS
HAVE A BLESSED 2018!**

Classifieds • Call 301-937-6796

SERVICES

RNG CLEANING SERVICE - Small family owned business catering to you and your household needs. Friendly, reliable and trustworthy. Reasonable rates and flexible hours. Licensed and insured. Free estimate with appointment. Call Delores at 301-442-5032 or 240-280-1451. 01/18

TAX RETURNS - For businesses/individuals. Payrolls. Gerald Neumaier CPA. 301-953-1341; 301-776-6545. gncpa@verizon.net. 01/18

HAULING AND JUNK REMOVAL. Complete Clean Out - Garages, Homes, Construction Debris, etc. Licensed, insured, free estimates. Mike Smith 301-346-0840. 07/18

TREE AND STUMP REMOVAL Pruning, land clearing, contact Bob Berra, 301-674-3770 or 301-384-4746. 12/22

BELTSVILLE LAWN - For all your lawn and landscaping needs. We are a full service, year around Beltsville business. We offer: topsoil trimming, gutter cleaning, yard cleanups, mowing, thatching, aeration, flowerbed edging and much more. Call Bill 301-455-4491. 01/18

NJ CLEAN: Janitorial, housecleaning, carpet and upholstery cleaning. Residential, commercial, churches. One time, weekly, monthly. Licensed and insured.

I PAY CASH FOR OLD RECORDS



Albums and 45s from 50s, 60s, 70s
Highest Prices Paid

Call Tom at (410) 533-1057

LESTER E. GROSS
Beltsville, MD.

BELTSVILLE REFUSE SERVICE

By the Job or by the Month
Dependable Reliable

937-5932

JORDAN Kitt's Music School

PIANO/KEYBOARD LESSONS

Free Trial Lesson

10762 Baltimore Avenue
Beltsville, MD 20705
(located in the Twin Chimneys Office Park)

301-595-2888 Ext. 1
Mblakely@jordankitts.com

Free estimates. Call Nancy 202-288-3578. 01/18

FOR RENT

One bedroom in end unit townhome in Beltsville. \$650 per month all utilities included. Call 240-997-0265 01/18

Shared office space available starting March 2018 at competitive rental rates in the Ammendale Business Park. Contact Optimized Thermal Systems at 866-883-6123 or info@optimizedthermalsystems.com for more information.

BURTONSVILLE FUEL CO., INC.
"Family Owned & Operated Since 1955"

HEATING OIL • DIESEL



Heating & Air Conditioning Oil Burner Service

"Be One of Our Warm Friends"

301-384-7575

www.burtonsvillefuel.com

ED LUNDQUIST
HOME IMPROVEMENT & REPAIR SPECIALIST
(301) 775-9001

For all types of jobs around your home

| | | | | |
|-----------|--------------|----------------|---------------|------------|
| Painting | Drywall | Gutters | Electrical | Flooring |
| Carpentry | Cement | Fences | Plumbing | Door Locks |
| Flooring | Ceramic Tile | Drain Cleaning | Power Washing | |

NO JOB TOO SMALL

Beltsville Resident since 1985 Maryland Home Improvement License

BALLROOM RENTAL—Seats up to 400
Banquet Room w/dance floor—Seats 80
COVERED PICNIC PAVILLION
-Barbeque House & Horseshoe Pits
in a private, secluded area
Weddings/Anniversaries * Birthday Parties
Corporate Parties/Picnics * Bar/Bat Mitzvahs
Quinceanera Celebrations

COLLEGE PARK MOOSE LODGE #453
3700 Metzert Road, College Park
Call 301-935-5525 ask for Jimmie

HALL RENTALS
(CATERING)

Luncheons—B'Day Parties—Anniversaries—Weddings

College Park American Legion—Post 217

9218 Baltimore Blvd. (301) 441-2783
College Park, MD 20740



Contact Gary Kingery



Reach your Beltsville neighbors with a low-cost classified ad in The Beltsville News

Call 301-937-6796

Mitchell Home Contractors

Mike Mitchell, Owner

Windows • Doors • Siding
Carpentry
Handyman Services

30+ years experience

Cell: 301.758.3622 • Fax: 410-943-3838
Mitchellhomecontractors@yahoo.com • MHIC#97113



CPR & First Aid Training
Wednesdays & Saturdays
(301) 595-8800
Register Online @ www.pleasedocpr.com

***Do You Know CPR?**
Day & Evening Classes Available



G.H.E. Electric Services, Inc.
Family Owned & Operated Since 1964
Residential & Commercial
Licensed & Insured

Let Our Family of Skilled Electricians Serve You
Joseph J. Panizari, Sr. • Joseph J. Panizari, Jr.
Richard A. Panizari • Dino S. Panizari

11222 Old Baltimore Pike
Beltsville, Maryland 20705
301-937-5051
Fax 301-937-5054

Everything electrical from basement to attic
Service Heavy Ups - Our Specialty
Replace Fuse Box with Circuit Breaker Box



Service & Repairs - All Makes & Models **PRECISION** MD State Inspection

CYCLE WORKS

Engine Building Harley-Davidson
Trans. Building Indian

Hours: Tues - Fri 12-6, Sat 10-3
10745 Tucker St., Unit 3, Beltsville, Maryland 20705
301.937.5783

Traditional Funerals **Monuments** **Cremation Service**

Donald V. Borgwardt
Funeral Home, P.A.
Family owned and operated

4400 Powder Mill Rd.
Beltsville, Md. 20705-2751 Pre-Need Counseling
(301) 937-1707 By Appointment
www.borgwardtfuneralhome.com

BELTSVILLE VOLUNTEER FIRE DEPARTMENT

4911 Prince George's Avenue
301-641-1092
HALL RENTAL

Experienced Catering by Ladies Auxiliary!
WEDDING RECEPTIONS, BANQUETS, BIRTHDAY PARTIES, BRIDAL SHOWERS OR ANY OTHER OCCASION






REFINANCE YOUR HIGH-INTEREST DEBT 2.99% APR FOR 6 MONTHS ON NEW CARDS!*

Make this the year for lowering your debt and attaining your financial goals. With our low-rate balance transfer credit cards, you can get all the power of Visa® and save money when you transfer your high-interest debt to our new *Elite Visa Rewards* or *Visa Platinum* credit cards.



Partnering for Financial Success

Transfer and Enjoy:

- ✓ **NO** Balance Transfer Fees
- ✓ Faster Debt Reduction

2.99% APR*

on all balance transfers for 6 months on new accounts!*

- ✓ **NO** Annual Fee

APPLY TODAY!

800.952.PGCU | 301.627.2666 | WWW.PRINCEGEORGESCFCU.ORG/VISA

Beltsville Branch
6985 Muirkirk Meadows Dr.
Beltsville, MD 20705

Bowie Branch
15201 Hall Rd.
Bowie, MD 20721

Largo Branch
9201 Basil Court
Largo, MD 20774

Upper Marlboro Branch
14741 Governor Oden Bowie Dr., RM-L210
Upper Marlboro, MD 20772

* APR= Annual Percentage Rate. Introductory Balance Transfer APR is 2.99% for 6 months from date of account opening; then the standard Balance Transfer APR applies. Standard Balance Transfer APR: 8.99% to 17.99%, based on your creditworthiness. The Promotional Rate is not available on Visa Secured credit cards. It does not apply to balances transferred from Prince George's Community Federal Credit Union loans. By signing this transfer request, I/we authorize Prince George's Community Federal Credit Union to verify the information on this request and to obtain credit information from a Credit Reporting Agency or others. It does not apply to balances transferred from Prince George's Community Federal Credit Union loans. You may transfer up to your available credit limit. Please continue to make minimum payments on your other credit card(s) until the balance has been transferred. The other institution(s) will refund all overpayments. Payment of the account(s) authorized by you may not satisfy any outstanding balance(s) on the designated account(s). Prince George's Community Federal Credit Union is not responsible for any outstanding balance(s) or additional charges in regard to such accounts, or for any changes resulting in any delay in the payment or transfer of balances. The total amount(s) transferred will be treated as a cash advance; finance charges will be applied from the day the balance(s) are transferred to your Prince George's Community Federal Credit Union credit card account. Prince George's Community Federal Credit Union reserves the right to refuse multiple transfers from the same credit card. Certain restrictions apply. For more information and conditions, please contact us.

