

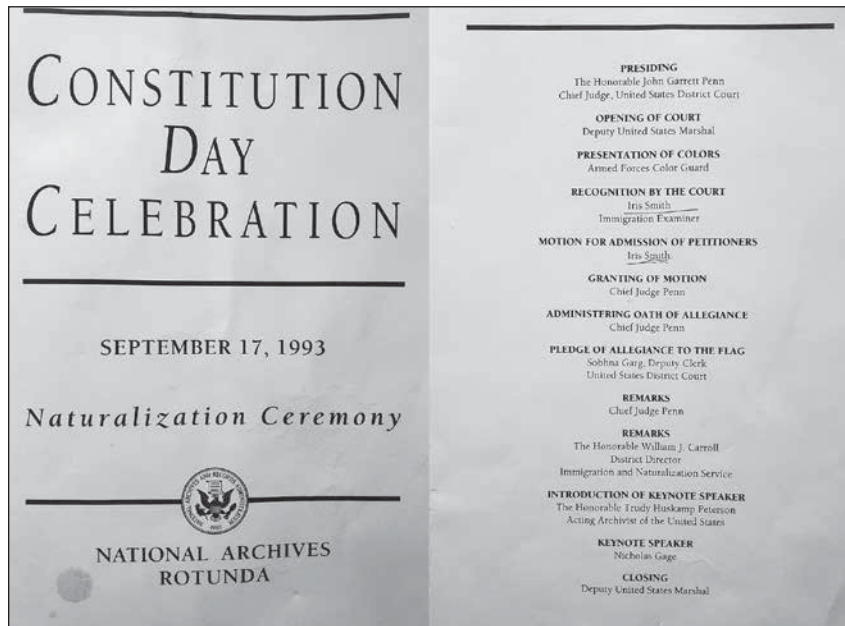
# The Beltsville News

An All Volunteer Newspaper

Vol. 74, Number 4

Beltsville, Maryland

April 2026



Agenda from a naturalization ceremony in September 1993 where Mama Imani led major roles. Mama Imani at Dulles airport with colleagues

**NEXT ISSUE:**  
**Submissions Due**  
**No Later Than:**  
**April 22**  
**Paper Out:**  
**April 30**

**News You Can Use**



Karen Coakley

**By Karen Coakley**

Beltsville West Park off Montgomery Road is getting a long overdue face-lift! Hopefully, the work will be completed by the middle of April. They are running behind schedule because of the crazy March weather.

KUDOS to police officers assigned to the District VI – Beltsville station, who arrested and charged a driver from Virginia who participated in an illegal car rally on March 13, 2026, in the unincorporated section of Laurel. During a traffic stop, officers located a loaded firearm in his car. The weapon had been reported stolen. The suspect is 20-year-old Diego Emmanuel Guerra of Woodbridge, VA.

On March 13, 2026, at approximately 11:30 p.m., officers responded to the 14400 block of Cherry Lane for the report of an illegal car rally. Officers observed approximately 100 vehicles taking part and subsequently dispersed the rally.

Don't Be Fooled... on April 1st or any other day!

**NEWS YOU CAN USE**  
 continues on page 8

## Mama Imani: A Beltsville Renaissance Woman

**By Jillian Schweitzer**

I honestly had a hard time writing this profile. Not because Ms. Imani-Frances Smith is uninteresting or because we didn't have the loveliest time chatting.

It is because it is hard to capture her absolutely glowing essence in a mere few words.

We see the houses and drive-

ways throughout Beltsville and never really imagine who lives behind those front doors. I had the absolute pleasure of knocking on one such door and finding a woman who has lived several lives in her lifetime.

This beacon of light in a fellow Beltsvillian is a woman who, even after retiring from the fed-

eral government, visited as many local schools as she could, sharing stories of her time working in the Department of Justice, Immigration and Naturalization Service. She retired from service in 1996 due to illness but continues to serve her community, including in her church and helping her neighbors.

Naturally, when the discussion of her working in immigration came up, her eyes lit with a fury at the current operations of ICE. She said she hated what they were doing, to people who came to this country looking for a better life, especially when she has spent

**MAMA IMANI**  
 continues on page 2

## UpStage Artists to Bring a Modern Classic to Beltsville This June

**By Rick Bergmann**

UpStage Artists, Beltsville's resident community theater, is excited to announce that it will be performing Christopher Demos-Brown's *American Son* this June. The play is about an estranged biracial couple who must confront their feelings about race and bias after their son is detained by local police following a traffic stop. Their disparate histories and backgrounds inform their assumptions as they try to find out what has happened to their son. *American Son* is a show that asks a lot of questions and doesn't shy away from tough conversations. It highlights the ongoing discus-

**UPSTAGE ARTISTS**  
 continues on page 3

## Pack 1031 Celebrating Cub Scouting and Getting Ready for our Pinewood Derby!!

**By Regina Halper**

This winter has been hard on the pack because if Beltsville Academy closes then we can't meet and have our regular meetings. We decided that if we were cancelled to keep trying. It took us until March 9<sup>th</sup> to hold our annual Blue and Gold Dinner, but we finally held it!

We are hoping that the Pinewood Derby doesn't suffer the same fate but we think that staying away from Mondays might help. The Derby will be held on March 21<sup>st</sup> at the Beltsville Community Center. The cars will be what they are. To get a photo for this month I present my grandson who won 1<sup>st</sup> Place in the Lion's den and 3<sup>rd</sup> Place in his Pinewood Derby race in Elkridge!

On Saturday, April 25<sup>th</sup> we



Finn H wins 3<sup>rd</sup> in his Pack's race

will lead the Anacostia Watershed Earth Day cleanup at Little Paint Branch Park. Come help us out. Signups will open on March 16<sup>th</sup>! All cleanup materials will be provided. There will not be t-shirts this year though participants can purchase a t-shirt through Anacostia Watershed Society after the event.

Check out our new website: <https://pack1031.org/> There you can find information on how to join our Pack. If you are interested in Cub Scouts at P1031, contact Regina Halper at Pack-1031cubscouting@gmail.com or BeAScout.org for information. We are a family scouting unit. During the school year we meet at Beltsville Academy for our den meetings and in the summer, we meet at least twice a month mostly in the parks.

# Wood's Flowers and Gifts

Fresh Flowers  
Beautiful Roses • Cards  
Plants • Dish Gardens  
Orchid Plants • Silk Flowers  
Stuffed Animals • Balloons

*Welcome  
Spring!  
Send someone  
flowers today!*

Daily deliveries locally and across the country. Bring in this ad for \$5.00 off any order of \$30.00 or more.

## Wood's Flowers and Gifts

Family-owned and operated since 1938

9223 Baltimore Ave. College Park, MD 20740  
301-474-7000 | woodflowersandgifts@gmail.com

# Beltsville News: Blast from the Past

By Ted Ladd

(From the Beltsville News issue of April 2001)

## Women's Community Club of Beltsville

By Ann Alushin

If you have an interest in genealogy, you won't want to miss the next Women's Community Club meeting on April 9, 2001. Our guest speaker will be Patricia O'Brien Shawker, certified Genealogy

Records Specialist at the Maryland State and National Archives. She is also a member of the Prince George's County Genealogy Society. Ms. Shawker will provide information on how to use the Archives as a resource for Genealogy.

### INCREDIBLE!

Before the streams of dawn  
Had spread across the sky  
Or moon had gone behind a cloud,  
A roll of thunder yawned,  
Cracked as the soldiers' eyes  
Beheld a tombstone move about.

An earthquake shook these men,  
They fell to earth in fright,  
While angels opened up this grave;

Though sealed by Pilate's hand  
To satisfy the vile  
Requests of ones who were afraid.

The Christ, sin killed, walked out,  
But could not keep Him down.  
Hell's confidence began to wane  
As Heaven gave a shout.  
Faith raised Grace from the ground,  
This Jesus Who had come to save.

It's fact, and not a dream!  
He is the sinners' cure  
By taking all of it away;  
Incredible it seems!  
Forgiveness reigns for sure  
For those who trust in Him today.

Beckie Hutchings  
3/06/2026

### MAMA IMANI

continued from page 1

so much time helping immigrant families in her lifetime, including those arriving from South Africa during Apartheid.

In addition to the several decades of work in service (where she earned all three badges: Information, Examiner, and Inspector)

she has also: worked as a flight attendant for TWA; was an election judge for District 21; voter registration volunteer; a notary for Maryland; joined several organizations (including Prince George's Fraternal Order of Police and Potomac Valley Chapter of the National Council of Negro Women); greeted Desert Storm families

at Dover Air Force Base; met Colin Powell, Queen Elizabeth and Edward Kennedy (among others); worked at Dulles Airport when Customs only had six lanes for passengers; designed clothes for fashion shows in high school; designed swimsuits that went to Miss America pageants in the late 1980's and is writing a book to boot!

We ended up sitting on the floor of her home, her showing the materials one collects over a life well lived and me sipping hibiscus tea that she very kindly prepared. Her walls are filled with letters from people, including President and Mrs. Obama and photos and antiques collected on travels. She spoke often of her father, William E. Smith, who was the first black man to serve as chef in the White House (during the Truman and Eisenhower presidencies). She said she got to sit in the kitchen, and the White House had the best milk and ice cream that she's ever had in her life. She spoke lovingly of her son, a musician. She gave me a big hug before I left, and I was stunned a bit after I left. This amazing woman opened her home and her memories to me, and it makes one wonder, how many incredible folks are behind doors that we never think to knock on.

# The Beltsville News

An All Volunteer Newspaper

PUBLISHED BY THE BELTSVILLE-VANVILLE DISTRICT CITIZENS' ASSOCIATION INC.

News: Rick Bergmann, editor@beltsvillenewstoday.com, 8 Center Street, Laurel, MD 20723. Enclose self-addressed stamped envelope if photo is to be returned. Accepted material may be edited. Letters to the Editor on local topics are encouraged. Names may be withheld upon request.

#### Advertising:

301-257-3408 Ted Ladd, 11722 Emack Rd., Beltsville 20705 • tedladd02@aol.com

#### Subscriptions:

One year is \$20. Send check to Beltsville News, 11722 Emack Road, Beltsville MD 20705

Editor Emeritas: Sally Ehrle

#### Staff Listings

Managing Editor/News Director: Rick Bergmann  
Advertising Manager and Business Manager: Ted Ladd

Supporting Staff Members: Karen Coakley, Rebecca Hutchings,  
Jason Inanga, Elizabeth Olson, and Nancy Thrush.

#### Circulation

Hard copies may be picked up at more than 50 locations in greater Beltsville, including the Beltsville Library, Wawa, Beltsville Community Center, schools, churches, restaurants and more. Many receive a monthly pdf of the paper via e-mail at no charge. To receive copies by email, go to www.beltsvillenewstoday.com, and enter your e-mail address.

Please join our Facebook page  
(<https://www.facebook.com/groups/300944563420364/>)  
and follow us at beltsville news on Instagram.  
Check out our website: www.beltsvillenewstoday.com

**I PAY CASH FOR  
OLD RECORDS**

Albums and 45s from 50s, 60s, 70s  
Highest Prices Paid

Call Tom at (410) 533-1057

Service & Repairs -  
All Makes & Models

**PRECISION**

MD State  
Inspection



Engine Building  
Trans. Building

Harley-Davidson  
Indian

**WORKS**

Hours: Tues - Fri 12-6, Sat 10-3  
10745 Tucker St., Unit 3, Beltsville, Maryland 20705  
301.937.5783

Parts & Service

**BURTONSVILLE FUEL CO., INC.**  
"Family Owned & Operated  
Since 1955"  
**HEATING OIL • DIESEL**

Heating & Air  
Conditioning

Oil Burner  
Service

"Be One of Our Warm Friends"  
**301-384-7575**  
www.burtonsvillfuel.com

# GASCH'S FUNERAL HOME

Family Owned & Operated Since 1858

#### Offering:

Traditional Funerals  
Life Celebrations  
Memorial Services

Memorial Events  
Caskets, Vaults, Urns  
Event/Meeting Center

4739 Baltimore Avenue Hyattsville, MD 20781

**301-927-6100**

# Letter to the Editor

Dear Editor,  
I am writing to express my strong concerns, as well as those of others in the community, regarding the recent granting of a special exception to build a crematorium to be attached to the existing Borgwardt's Funeral Home on Powder Mill Road in Beltsville, MD. While we understand the importance of providing funeral services to our community, research supports that placing a crematorium in such close proximity to numerous schools and childcare facilities raises serious health, safety, and ethical questions that warrant public attention, and also negatively impact real estate values.

Within a five-mile radius of the approved site, there are multiple educational institutions and many daycare facilities that serve our community's youngest residents. The presence of these sensitive facilities makes it imperative that we carefully consider the potential impact of this construction project on the health and well-being to the residents of the Beltsville Community.

Crematorium emissions, although regulated, can include potentially harmful pollutants such as dioxins and particulate matter. These substances pose health risks, particularly to vulnerable populations such as **children, pregnant women, senior citizens, and individuals with pre-existing health conditions.** Additionally, the smoke emitted when bodies are being cremated includes fumes and odor which can be offensive and pose great health risks. The close proximity of these facilities to schools and daycares significantly amplifies these concerns, as it increases the likelihood of exposure to toxic airborne emissions.

Moreover, the placement of a crematorium in a heavily residential area could adversely affect property values and diminish the overall quality of life for residents. It also raises questions about community planning and the transparency of the zoning approval process. Residents deserve to be assured that their health and safety are prioritized over commercial interests before construction begins on this project approved by

the Prince George's County Planning Department.

Although all required regulatory processes were followed in filing for this special zoning exception which was granted, the dissemination of information to the residents of Beltsville was to a relatively small audience.

In light of these concerns, I and other concerned residents, urge local authorities and planning officials to reconsider the zoning decision and conduct a thorough environmental impact assessment, and also make the greater Beltsville Community aware of all plans regarding the proposed construction and health concerns. It is vital that our community's health, safety, and well-being are protected. Alternative locations, perhaps further away from residential and educational zones, should be explored to ensure that we maintain a safe and healthy environment for all residents, especially our children.

In addition, I strongly urge each Beltsville resident who was unaware of these plans to build this facility with potential health and safety concerns in the middle of where we live and raise our families to search the internet under the topics: "**Dangers of Crematoriums**", and "**Real Estate Values and Crematoriums**". Then, contact the office of our county councilman, Thomas Dernoga: (email: CouncilDistrict1@co.pg.md.us) and (phone: (301) 952-3887), to express your concerns, your unhappiness that this information wasn't more widely shared with the community by his office, request he conduct community meetings where concerned residents can voice their concerns and objections, and place this proposed project on-hold until the Beltsville Community is satisfied with the findings and outcome.

Thank you for your attention to this important matter. I and others concerned hope that through public discourse and community advocacy, we can ensure responsible development that respects the health and safety of our residents.

Sincerely,  
Rhonda Pavel

## UPSTAGE ARTISTS

continued from page 1

sion around race, respect for law enforcement, and our own innate biases toward those we may see as "the other side."

The play is a relatively new work, having opened on Broadway less than a decade ago in 2018. It is unique in that it presents several viewpoints and gives us characters who must live with the consequences of their actions and choices. As the director of UpStage's production, I chose this

play knowing it may challenge audiences—but my hope is that you will give it a chance and come explore these ideas and themes alongside the characters. We all have preconceived notions about topics that are often labeled as political in today's society, and it can be difficult to move beyond them. I invite you to come experience the show and engage in a dialogue with it, because there are no easy answers when discussing

**UPSTAGE ARTISTS**  
continues on page 8



## Bonnie Bartel

301-343-8887

Call, Text or Email  
for an appointment

Bonsnobun@aol.com

Hair Design

10820 Rhode Island Avenue  
Beltsville, MD 20705



## RJ Berra Inc. / Services Unlimited

Tree and Stump Removal Experts

Our team is fully equipped to handle all your tree removal needs. Services offered are from a basic pruning to a full tree removal by crane.

Call Bob, your community tree service expert since the 1980's

301-384-4746

LTE#782

A licensed tree expert with the Maryland Department of Natural Resources



New  
Patients  
Welcome

## Beltsville Dental Care

John J. Moynihan, DDS, PA

10760 Rhode Island Ave.

301-937-4448

Visit us at [beltsvilledentalcare.com](http://beltsvilledentalcare.com)

## IF YOU NEED HELP WE ARE HERE!

Si necesitas ayuda, estamos aqui!

301-937-8119

[www.baccmd.org](http://www.baccmd.org)



Struggling with job loss, to pay rent, to get food, or need emergency help? The Beltsville Adventist Community Center (BACC) exists to help those in the Beltsville Community and beyond take the next step toward financial independence.

*FIND US at 4220 Ammendale Road, Beltsville MD 20705,  
located in the house behind the Beltsville SDA Church*

### BACC Services

- Job Counseling Assistance
- Rental & Utility Assistance (on a case by case basis)
- Food Supplement
- Professional Counseling

### Food and financial assistance HOURS:

Tues and Wed 9 am to 2 pm.

### Office calling HOURS:

Mon through Thurs  
9 am to 4:30 pm

### On Site Agent of Dept of Social Services (DSS)

- SAIL: Apply for services on-line
- Food Supplement (FS)
- Medical Assistance for Families & Children (FAC)
- Maryland Children's Health Program (MCHP)
- Recertify—(Redetermination) -Dropoff documents
- Other DSS Emergency Assistance

We are celebrating our tenth year of operation

OPEN OPEN OPEN OPEN

# Spring Sale

## 20% off Blinds & Shades

Honeycomb Shades, Wood Blinds, Verticals, Silhouettes, Pirouettes and Woven Wood Shades

Call 301-937-6100 for Advice and In-home Service

Flooring Specials; Big savings on Carpet Nylons, Wool and Polyester Wood Floors By Bruce, Mirage and Industpaquet Cork & Bamboo Vinyl; Floating, Sheets and Tile, Ceramic and Porcelian

Visit **Will's Decorating**

at 5122 Baltimore Ave Hyattsville for great advice and service.

Since 1965 we have been serving the DMV. See Valerie and Michael the 3rd generation owners of Wills.

So for all your decorating needs including wallpapers, Benjamin Moore Paint, Chalk and Milk Paint and Draperies.

301-937-6100

[decoratmaryland.com](http://decoratmaryland.com)

Free Parking in the rear

OPEN OPEN OPEN OPEN

## Ask the Expert BY ANDRE GIBSON, CHAMPION HOME IMPROVEMENTS

Hot shower anyone? How about a new bathroom in a day or two? A one-day bathroom remodel offers homeowners a fast, convenient, and efficient way to upgrade one of the most important rooms in the home. Bathrooms are used every day, and when they become outdated, damaged, or difficult to maintain, they can affect comfort and home value. Traditional bathroom renovations can take weeks, sometimes even months, creating disruption, dust, and inconvenience. A one-day bathroom remodel provides a modern solution that allows homeowners to enjoy a refreshed,

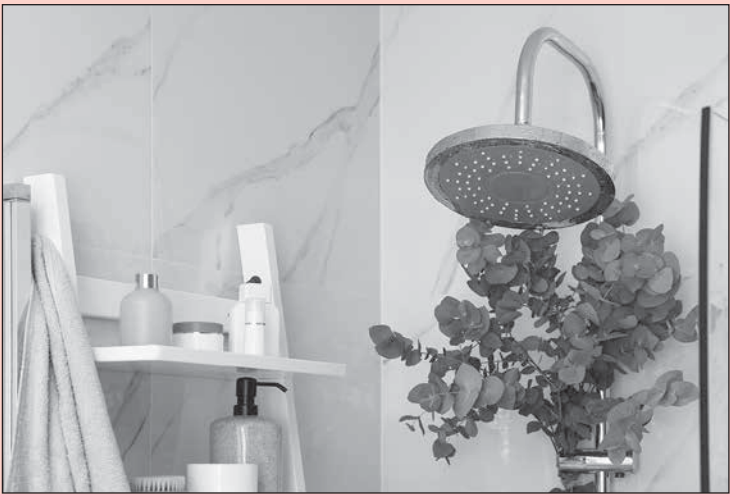
beautiful bathroom without the long construction process.

One of the biggest benefits of a one-day bathroom remodel is the speed of installation. Instead of waiting several weeks for demolition, plumbing adjustments, tiling, and finishing work, professional installers can complete the transformation in as little as a single day. This means homeowners can return to using their bathroom quickly with minimal interruption to their daily routines. Families with only one or two bathrooms especially benefit from this quick turnaround because they cannot afford to have a

bathroom out of service for an extended period.

Another major advantage is the reduced mess and disruption compared to traditional renovations. Standard remodeling projects often involve tearing out walls, removing tile, and working with cement, which can create dust and noise throughout the home. A one-day remodel typically uses custom-fitted wall systems, tub liners, or shower replacements that are designed to fit directly over existing structures. This approach minimizes demolition and keeps the work area cleaner and more contained, making the process much easier for homeowners.

Durability and low maintenance are also important benefits. Many one-day bathroom systems are made from high-quality acrylic or composite materials that are resistant to mold, mildew, and staining. Unlike traditional tile grout, which can crack and discolor over time, these modern wall systems are easy to clean and maintain. Homeowners can keep their bathrooms looking new with simple wiping and regular household cleaners rather than scrubbing grout lines.



## Kitty Post By Stephanie Stullich



### Why Bother Getting My Cat Vaccine Boosters?

Many loving cat parents often wonder, do I really need to get my cat the recommended vaccine booster shots? After all, it costs money and is one more task on a busy person's to-do list. We get it! But there are several reasons why vaccine boosters are important and can potentially save you a lot of time and money down the road, not to mention possible serious health consequences for your beloved pet.

First off, the two most important vaccines for cats are 1) rabies, and 2) "FVRCP", often referred to simply as the "cat distemper vaccine." A third vaccine that you may want to consider is the Feline Leukemia vaccine.

Rabies is a very dangerous viral disease that is essentially 100 percent fatal in any cat or human who



is unlucky enough to get infected. Transmission is most commonly through a bite wound from an infected animal but can also happen from a scratch wound. The rabies incubation period can be as long as 12 months for cats and for humans but is generally 2-3 months. Once the virus travels through the bloodstream to the brain, the individual then acquires an active rabies infection. Unfortunately, there is no cure, and death is both certain and very painful. Because rabies is such a serious public health threat, law (Maryland Code, Health-General 18-318) requires that all pet cats and dogs must be kept current on their rabies vaccination schedule – typically once a year. (There is a 3-year rabies vaccine option that carries a somewhat higher risk of side effects for your pet, i.e., injection site sarcoma.)

But what if my cat never goes outside? Responsible pet parents may feel that the rabies vaccine isn't really necessary in such cases. However, the consequences of this decision can be dire if your unvaccinated cat accidentally escapes outside and gets bitten by an unknown animal, or if your cat bites a visitor inside your home.

In the first example, health regulations require that your cat (or dog) would have to be quarantined for 4 months, kept in a crate, and not allowed contact with any humans or pets. Of course, this would be very distressing for both you and your pet! The health department may monitor this and could even do a home visit. If your vet treats your cat for a bite

## Share Your News!

Send your article submissions to News Director Rick Bergmann at [editor@beltsvillenewstoday.com](mailto:editor@beltsvillenewstoday.com)

# LivingWell

JOIN US FOR  
VEG-FEST  
MAY 17, 2026  
12 - 4 PM

VISIT [LIVINGWELLABC.COM/EVENTS](http://LIVINGWELLABC.COM/EVENTS) FOR MORE INFORMATION

<b>Vegan &amp; Vegetarian</b>	<b>Giveaways</b>
<b>Food Samples</b>	<b>Christian Media</b>
<b>Vitamins &amp; Supplements</b>	<b>Health &amp; Wellness Classes</b>

12004 CHERRY HILL ROAD, SILVER SPRING, MD 20904  
[WWW.LIVINGWELLABC.COM](http://WWW.LIVINGWELLABC.COM) | 301-572-0700  
SUN: 9 AM - 6 PM | M-TH: 9 AM - 9 PM | FRI: 9 AM - 3 PM | SAT: CLOSED

# 15% OFF

## ONE ITEM AT LIVINGWELL

Limited to 1 item; 1 coupon per customer; Not eligible on sale items; Limited to in-stock items only; in-store use only; Must be presented to cashier at time of payment to redeem; Cannot be combined with other sales, discounts, or coupons.

**VALID ALL OF APRIL 2026**



**KITTY POST**  
continues on page 7



LifeNet HEALTHCARE SERVICES, Inc.

HOME HEALTHCARE FOR SENIORS, PHYSICALLY CHALLENGED & DEVELOPMENTALLY DELAYED

NO MINIMUM HOURS REQUIRED

AFFORDABLE . COMPASSIONATE 301-798-5678 FLEXIBLE . QUALITY HOMECARE



We Provide 24/7 Homecare for Individuals with:

STROKE
DEMENTIA
ALZHEIMER'S
PARKINSON'S
VISION IMPAIRED
MULTIPLE SCLEROSIS (MS)
PHYSICALLY CHALLENGED
DEVELOPMENTALLY DELAYED
and MUCH MORE
WE SERVE ALL COUNTIES IN MARYLAND

Our Caregivers are Experienced, Fingerprinted, & Background-checked. We carefully match your loved one with an appropriately trained caregiver. We adhere to HIPAA regulations & proudly assist with listed ADLs and IADLs. We will schedule a meet & greet before your caregiver's first day of work

Table with 4 columns: Medication Reminder, Grooming & Head to Toe Skin Care, Toileting & Hygiene Care, Dressing, Grocery & Household Shopping, 24/7 Live-In Care, 24/7 Live-Out Care, Personal Hygiene Care, Feeding & Managing Diet, per Doctor's Order, Medication Management (RN) Wound care etc. (RN), Walking Exercise & Continuous Safety Monitoring, Bathing, Personal Care & Companionship, Scheduling & Reconciling Doctor's Appointment, Incontinence Care, Assist with Prescribed Therapeutic Exercise & Activity Regimens, Periodic Assessments & Health Status Review by LifeNet RN, Running Errands (e.g. Picking up Medication from Pharmacy), as applicable, Light Housekeeping Management, Surgical & Rehabilitation Transition Care, Transfer & Continuous Safety Monitoring, Laundry Management, Respite Care, Mother-Baby (Care for Pregnant or New Mother)

FREE IN-HOME CONSULTATION REGISTERED NURSE ON CALL 24/7 INCLUDING WEEKENDS & HOLIDAYS

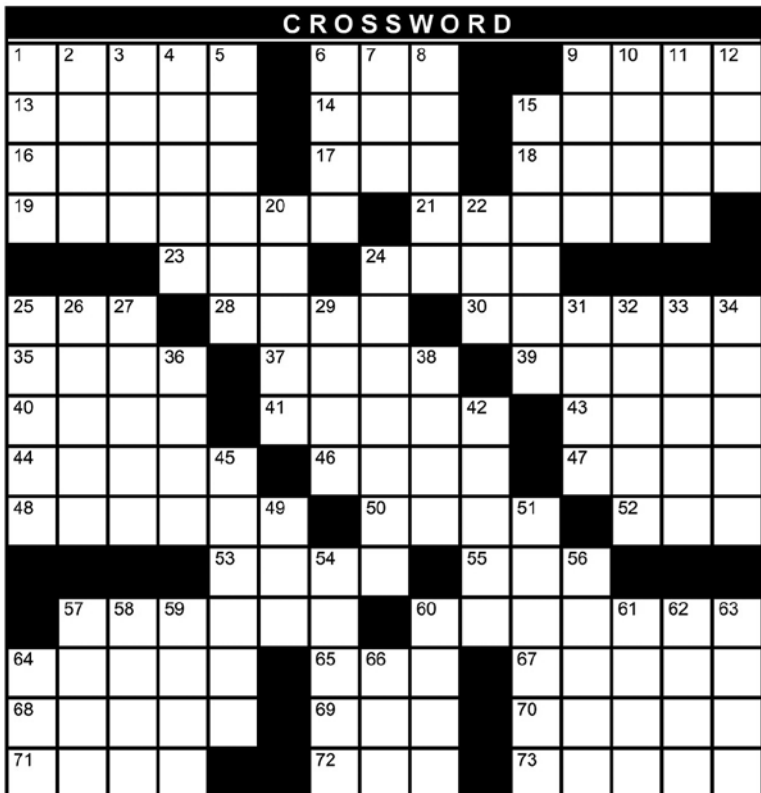
LifeNet IS CREDENTIALLED BY Office of Healthcare Quality, MARYLAND DEPARTMENT OF HEALTH & MENTAL HYGIENE

NOW ACCEPTING MEDICAID WAIVER VETERAN CLIENTS

PRIVATE PAY and LONG-TERM INSURANCE



Statepoint Crossword: Plants



ACROSS

- 1. Canvas primer
6. Chlorofluorocarbon, acr.
9. Heroin, slang
13. Poetic although
14. Indochinese language
15. Part of a whole
16. Like certain suspects
17. Rainbow, e.g.
18. Not mainstream, as in art
19. \*Coast \_\_\_\_, world's tallest tree
21. \*Vanilla-producing plant
23. Classic film production company, acr.
24. \_\_\_\_ in the neck
25. \_\_\_\_ the season!
28. Ready and eager
30. "Reader's \_\_\_\_" magazine
35. "Do \_\_\_\_ others..."
37. Rubber bulb on an old bike
39. "Lord of the Flies" shell
40. Bear's den
41. \*Colorful daisy-like bloom
43. \*The corpse flower emits a foul one
44. Spouse's parent
46. EU money
47. Unadulterated
48. Fish food unit
50. Karl of politics
52. Between NE and E

- 53. Fat Man or Little Boy
55. Major time period
57. \*Fastest-growing plant
60. \*Coffea \_\_\_\_ a.k.a. coffee plant
64. Dam
65. Slovenly abode
67. More painful
68. Change the Constitution
69. Old Man's turf, according to Hemingway
70. Black tie one
71. Shakespeare, a.k.a. \_\_\_\_ of Avon
72. Kum Ba follower
73. What defense does, after presenting

DOWN

- 1. India's wild ox
2. Something \_\_\_\_
3. Poker variety
4. Medieval oboe
5. Study of bird eggs
6. Armor-\_\_\_\_
7. Distant
8. Cold-weather drink
9. Hyperbolic sine
10. Ghana money
11. Battery fluid, e.g.
12. "Wow!"
15. Alfresco meal

- 20. Nebraska's largest city
22. Antonym of keep
24. Throw out of kilter
25. \*It once was more valuable than gold
26. Absurd
27. Static picture
29. \*U. S. national flower
31. Gwyneth Paltrow's brand
32. Empower
33. Open disrespect
34. \*Leaves of \_\_\_\_, let them be
36. Non-written exam
38. Infamous Roman tyrant
42. Space exploration vehicle
45. Like duck's foot
49. Likewise
51. Pencil tip
54. \*Covered with sphagnum
56. Beyond's partner
57. Pulpit predecessor
58. Affirm with confidence
59. Darn a sock, e.g.
60. Nursemaid, in India
61. Wraths
62. One-tenth of a dime
63. Liberal pursuits
64. Blood testing site
66. \*Camellia sinensis drink

Consumer Cellular advertisement featuring a \$25 discount, 'Off First Month of New Service!' offer, and contact information: 888-804-0913.

See Solution on page 6

**CHAMPION**  
HOME IMPROVEMENTS, LLC

**ONE DAY BATHROOM  
REPLACEMENT SALE**

CALL US NOW  
**301-277-7200**

Insurance claim assistance available!  
**SENIOR DISCOUNTS**

mychampionhome.com  
LICENSED · BONDED · INSURED MHIC # 44848



Check us out on Facebook!  
The Beltsville News

**The Crescent Nursery  
and Summer Program**

Est. 1959

Children 2-6 Years  
and

Before/After School Program

Qualified staff. A caring environment. Specially  
planned programs. Snacks provided

OPEN ALL YEAR. ALL DAY

11723 Chilcoate Lane, Beltsville, MD  
**(301) 937-3133**

**Crossword Solution from page 5**

G	E	S	S	O		C	F	C		S	C	A	G			
A	L	T	H	O		L	A	O		P	I	E	C	E		
U	S	U	A	L		A	R	C		I	N	D	I	E		
R	E	D	W	O	O		O	R	C	H	I	D				
			M	G	M		P	A	I	N						
T	I	S		Y	A	R	E		D	I	G	E	S	T		
U	N	T	O		H	O	R	N		C	O	N	C	H		
L	A	I	R		A	S	T	E	R		O	D	O	R		
I	N	L	A	W		E	U	R	O		P	U	R	E		
P	E	L	L	E	T		R	O	V	E		E	N	E		
					B	O	M	B		E	R	A				
			B	A	M	B	O	O		A	R	A	B	I	C	A
L	E	V	E	E		S	T	Y		S	O	R	E	R		
A	M	E	N	D		S	E	A		E	V	E	N	T		
B	A	R	D			Y	A	H		R	E	S	T	S		

**Rosapepe's Report to Beltsville**

**Balancing the State Budget**

Balancing the state budget in a tough economy remains a significant challenge. The layoffs of federal employees and contractors, along with the closure of federal agencies, continue to impact Maryland's families, businesses, and the state budget. At the same time, rising utility rates and gas prices are putting additional pressure on the state budget, just as they are on family budgets. As a result, the Governor and the legislature have had to make major budget cuts this year while still working to protect investments in education, public safety, health care, and other critical priorities.



bring, visit [aarpfoundation.org/taxhelp](http://aarpfoundation.org/taxhelp) or call 1-888-AARPNOW (1-888-227-7669).

**Senate and House College Scholarships for Beltsville Students**

College scholarships are available for Beltsville students. Delegates Joseline Peña-Melnyk, Ben Barnes, Mary Lehman, and Senator Jim Rosapepe award scholarships each summer. Applications for the 2026-27 school year are posted on the 21st District Delegation website. In preparation, students should ensure they have a Maryland College Aid Processing System (MDCAPS) account at <https://mhcc.maryland.gov/> and complete the Free Application for Federal Student Aid (FAFSA) at <https://studentaid.gov/>. More information can be found at <https://www.21stdistrictdelegation.com/college-scholarships>.

**Help With Pepco and BGE Bills**

For those needing help with Pepco and BGE bills, resources are available. If you are a BGE customer, you can visit <https://bge.com/heretohelp> to find ways to manage your bill, use energy more efficiently, or access energy assistance programs. These include an Assistance Finder, state programs, budget billing, and payment arrangements. Pepco customers can call customer service at 1-800-

424-8028 between 7:00 AM and 8:00 PM, Monday through Friday. Additional information is available at <https://www.pepco.com/billsupport> where you can find an Assistance Finder, energy-saving tips, and options to schedule an energy consultation.

**Help With Your Taxes**

If you need help with your taxes, free assistance is available through April 15. The AARP Foundation offers in-person tax assistance and preparation through its Tax-Aide program. IRS-certified volunteers provide this service to anyone, regardless of age. To find a Tax-Aide site or learn more about what documents to

**Contact Me**

Please feel free to reach out with any questions or concerns. You are welcome to get in touch if assistance is needed. Contact can be made via email at [jrosapepe@yahoo.com](mailto:jrosapepe@yahoo.com) or by calling 410-841-3141.

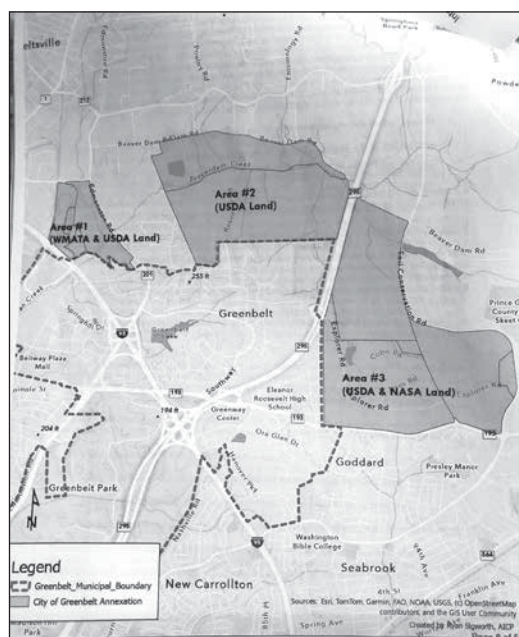
**Neighbors in the News**

**Changes on the Horizon for BARC?**

By Jillian Schweitzer

I attended a recent Greenbelt County Council meeting, where they discussed annexing parts of BARC (Beltsville Agriculture Research Center). I was the only representative (to my knowledge, all the speakers before and after me were from Greenbelt) from Beltsville who spoke. I expressed surprise and frustration that our community wasn't included more in this conversation as Beltsville is literally the first word in BARC (a name-to-be-clear-has changed over the years from when it was first developed and land gathered in the 1910's) and a sister city of Greenbelt. I was informed by the Mayor (who seemed very genuine in wanting to protect BARC lands when he came up to speak to me) that Council Member Dernoga and Senator Rosapepe were informed of this change.

(I was updated from Council Member Dernoga's office a day after the meeting that he and Representative Ben Barnes were working on this matter with



updates to come in the very near future. And as of this writing, I have this additional update to share:

Delegate Mary Lehman authored House Bill 1267, Patuxent Research Refuge and Beltsville Agricultural Research Center - Zoning Classification (Protecting Patuxent Research Refuge Act) (<https://mgaleg.maryland.gov/mgawebsite/Legislation/Details/>

HB1267?ys=2026RS). CM Dernoga helped rewrite the amendments to make the bill more comprehensive.

Bill Synopsis: Requiring a certain local zoning authority to designate and maintain certain property in a zoning classification that restricts the uses in a certain manner under certain circumstances; and requiring the appropriate authority to maintain certain property in a certain zoning classification that restricts the uses in a certain manner under certain circumstances.

We were told that the maps for the Greenbelt annexation would be modified to keep the annexation from extending to Beaver Dam Road (Beltsville/District 21), but we have not seen any indication of this taking place officially. We have reached out to Greenbelt Mayor Emmett Jordan and hope to hear from him for confirmation.)

A bigger question, at least for me and I'm sure for many others, is why now? It's federal land that can't be developed or

**BARC**

continues on page 13

# From the Office of Council Member Tom Dernoga

## District 1 Community Conversation with CEX Aisha Braveboy

Please join County Executive Aisha Braveboy and me for a Town Hall Meeting focused on the Proposed Budget and other issues. The Town Hall will be held on Thursday, April 9, at 6 PM at the BAPS Mandir, 4320 Ammendale Road, Beltsville, MD 20705. This is a great opportunity to learn about the County Executive's vision for the budget so that you can support key items or make requests for changes. In addition, the County Executive will have representatives from numerous agencies, and she and I will take questions. Register to attend at [tinyurl.com/CEXConvo2026](http://tinyurl.com/CEXConvo2026). Find the proposed budget on the County website: [princegeorgescountymd.gov](http://princegeorgescountymd.gov).

## County Council Budget Hearings

The County Council will hold a public hearing on the MNCPPC (Maryland-National Capital Park and Planning Commission) Budget and two public hearings on the County Budget. The MNCPPC Budget hearing is Monday, April 27, at 6 PM, and the County Budget hearings are Tuesday, April 28, and Monday, May 4, at 6 PM. All of the budget hearings are in the Council Hearing Room, Wayne K. Curry Building, 1301 McCormick Drive, Largo, MD 20774. You may submit comments in writing.

## District 1 Community Conversation with 21st District Delegation

Also, on Wednesday, April 22, I will be co-hosting a Community Conversation with our 21st District Delegation (Senator Jim Rosapepe, Speaker Joseline Peña-Melnyk, Delegate Ben Barnes, and Delegate Mary Lehman). Our



Council Member Dernoga and District VI PGPD Major Saul Serpas at the March District 1 Community Conversation.

State representatives will discuss highlights of the 2026 General Assembly Session. This will take place at the Laurel-Beltsville Senior Activity Center, 7120 Contee Road, Laurel, MD 20707, at 6 PM. Register to attend at [tinyurl.com/D21Convo2026](http://tinyurl.com/D21Convo2026).

## Upcoming Legislation: At-Large Council Seats

Does the County Council need At-Large Seats? When the County Council proposed changing the Charter in 2016 to expand the Council to 11 members by adding two At-Large Seats, I was one of the leaders of the unsuccessful effort to defeat the Charter amendment. The wording on the ballot was confusing and misleading, and I believe that this was intentional. The opponents believed that adding At-Large seats was a blatant effort to circumvent term limits, a waste of tax dollars, and that, due to the substantial amount of campaign funds needed to run a County-wide campaign, the seats would be controlled by special interests.

As we approach the third term with At-Large seats, I feel that the opposition's original concerns have been demonstrated to be correct. Therefore, I will be proposing legislation to place a Charter amendment on the ballot to elimi-

nate the At-Large seats as of the 2030 election. The seats cannot be eliminated for this election because the Charter amendment first needs to be approved. To place a Charter amendment on the ballot takes eight votes, and it may be difficult to get these many votes from Council Members. I would appreciate your support. Please let me know your thoughts.

## Updates on the Subregion 1 Minor Plan Amendment & Sectional Map Amendment

Very important! The Subregion 1 Minor Plan Amendment & Sectional Map Amendment process is coming to a head. After a preliminary Town Hall Meeting on July 28, 2025, a Listening Session on November 24, 2025, and an Open House on January 21, 2026, MNCPPC planners are getting ready to release their proposed amendments to the 2010 Subregion 1 Master Plan. The schedule is to release the proposed amendments (Initiation) on April 14, 2026. Then, a public hearing must be held within 60 days (scheduled for June 8, 2026), with the record open for two weeks afterward for additional public comments. I want to make sure everyone knows this well in advance so they can block out time for reading and commenting. Over the summer, the Park and Planning Staff will review and address public comments with the intent of presenting the final version to the County Council for adoption in October.

To keep in touch and stay informed, please sign up for our District 1 eNewsletter at [tinyurl.com/D1eNewsletterOptIn](http://tinyurl.com/D1eNewsletterOptIn), email [councildistrict1@co.pg.md.us](mailto:councildistrict1@co.pg.md.us), or call 301-952-3887.

## KITTY POST

continued from page 4

wound of unknown origin, they are required to report this to the health department which will then follow up with you. If your pet bites you or another human or pet, the timeline is shorter – the cat (or dog) must be quarantined and monitored for 10 days to ensure that it does not come down with rabies symptoms. If your pet received a rabies vaccine in the past but is not current, the health department will consider that legally the same as if it had never received a rabies vaccine.

In contrast, the FVRCP vaccine has benefits specific to cats, because it protects against three viruses that are not transmissible

to humans: Feline Viral Rhinotracheitis (commonly called feline herpesvirus), Calicivirus, and Panleukopenia (also known as feline distemper). The recommended vaccine sequence is two shots as a young kitten, followed by a booster shot one year later and then additional boosters every three years. Feline herpesvirus is an especially common virus; estimates are that 50 percent or more of all pet cats in the U.S. have had this, and it often remains in the body as a "latent" virus that can "flare up" under stress (or seemingly, no particular reason).

In one case, a beloved 2-year-old cat named Frankie suddenly fell ill, with symptoms of sneezing, eye discharge, high fever (105.8!), extreme lethargy, and refusal to eat.

Frankie had had the initial recommended series of kitten vaccines as well as an on-time rabies booster but did not receive a 1-year FVRCP booster. Frankie never went outside and had no contact with cats from outside her home – and yet still she got sick. After \$900 in vet bills and treatments, Frankie made a full recovery – but very likely this whole episode could have been avoided by following the recommended vaccine schedule.

The Prince George's SPCA conducts low-cost shot clinics, at a minimum, on the first Sunday of every month. Rabies and Distemper (DHPP and FVRCP) are only \$20 each. Appointments are required. Visit [www.pgspca.org](http://www.pgspca.org) to see the schedule and make an appointment.

SUDOKU

Call today and receive a  
**FREE SHOWER PACKAGE**  
**PLUS \$1600 OFF**

**SAFE STEP**  
WALK-IN TUB

1-855-576-5653

With purchase of a new Safe Step Walk-in Tub. Not applicable with any previous walk-in tub purchase. Offer available while supplies last. No cash value. Must present offer at time of purchase. CSLB 1082165 NSCB 0082999 0083445

SPECIAL OFFER

		8		4		3		
	7			8	3		1	
3					2			9
5					6	7		
7								3
		9	3					8
4			1					7
	6		2	3			5	
		7		9		6		

© StatePoint Media

Fill in the blank squares in the grid, making sure that every row, column and 3-by-3 box includes all digits 1 through 9.

Sudoku Solution on page 8

Traditional Funerals
Cremation Service

Donald V. Borgwardt

Funeral Home, P.A.

4400 Powder Mill Rd. Beltsville, MD 20705-2751

301-937-1707

[www.borgwardtfuneralhome.com](http://www.borgwardtfuneralhome.com)

Would you be smiling if this happened to your eyeglass frame?

Yes, if you wear frames made from Flexon.

**Hours:** Tues. & Wed. - 9am - 7pm  
Thurs. & Fri. - 9am - 6pm  
Sat. - 10am - 2pm  
Sun. & Mon. - CLOSED

Brewer & Marshall, Inc. Opticians

10490 Baltimore Ave. • Beltsville, MD 20705

301-937-3677

© 1998 Flexon is a trademark and distributed by Marchon Eyewear, Inc.

**BELTSVILLE VOLUNTEER FIRE DEPARTMENT**



4911 Prince George's Avenue  
hallrental@beltsvillevfd.com  
**HALL RENTAL**



Experienced Catering by Ladies Auxiliary!  
WEDDING RECEPTIONS, BANQUETS, BIRTHDAY PARTIES, BRIDAL SHOWERS OR ANY OTHER OCCASION



*Karen M. Coakley*

*You know me . . .  
I know Real Estate!*



SILVER SPRING

Expansive 4-bedroom, 2.5-bath colonial offers a bright & open main level designed for both everyday living and entertaining. The heart of the home is the gourmet kitchen (renovated in 2017). From the kitchen, step down in one direction to the light-filled sunroom with vaulted ceilings. \$849,900

**Spring House Hunting Special Financing Programs Available Call for Details \$\$\$  
301-741-7672**

**Karen M. Coakley**  
Your 110% Realtor GRI

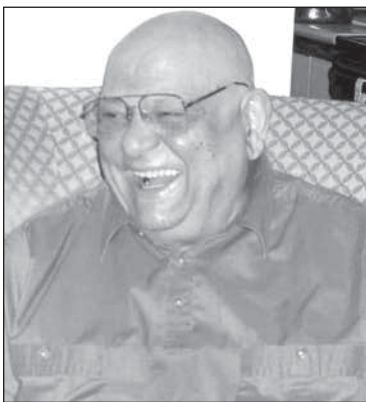
**Cummings & Co. Realtors**  
5950 Symphony Woods #210  
Columbia, Maryland 21044  
301-741-7672 (cell)  
410-823-0033 (office)



**Sudoku Solution from page 7**

9	5	8	7	4	1	3	2	6
6	7	2	9	8	3	4	1	5
3	1	4	6	5	2	8	7	9
5	4	3	8	1	6	7	9	2
7	8	6	5	2	9	1	4	3
1	2	9	3	7	4	5	6	8
4	9	5	1	6	8	2	3	7
8	6	1	2	3	7	9	5	4
2	3	7	4	9	5	6	8	1

**Obituaries**



Walter Bohorfoush

**Walter L. Bohorfoush, Sr.  
12/15/35 - 3/12/26**

Walter Bohorfoush brought curiosity, precision, and unwavering integrity to everything he touched during his remarkable 90 years. Born in Birmingham, Alabama, he built a distinguished 60-year career as a real estate appraiser that took him from local properties to international assignments—including appraising the US consulate in Düsseldorf after the Berlin Wall fell and navigating the complexities of desert tortoise habitats during military base expansions.

He lived on Montgomery Road in Beltsville for more than 60 years and was known for his garden of seasonal inflatables.

His sharp mind never rested.

on two different trivia teams for a decade, armed with an encyclopedic knowledge and his favorite challenge: “Where is it written that...?” He approached life’s puzzles—whether in real estate, politics, or Wednesday night trivia—with the same passionate attention to detail that made him invaluable during the Base Realignment and Closure planning as chief appraiser for the US Army Corps of Engineers.

A devoted parishioner at St. Joseph’s Beltsville, Walter was a mainstay on the altar as a lector on Saturday evening Mass for 5 decades. He was a member of the Knights of Columbus Council 2809 for nearly 60 years, known there as “Mr. B” he served on the degree team and supped on Friday nights with his family. Earlier he spent summers as a timer for the swim team alongside his wife who was the scorekeeper.

A proud Air Force veteran, Walter’s greatest joy came from his family. He is survived by sons Walter (Marie) and John (Lisa), daughter Ada, daughter-in-law Debra, and grandchildren Sara, Trey, Rachael, Kayla, Amy, and Julie. He now reunites with his beloved wife Barbara and son Robert, carrying forward a legacy of service, curiosity, and love.

In lieu of flowers please con-

sider a donation to Montgomery Hospice and Prince George’s Hospice <https://montgomeryhospice.org/donate-pg/>

**James Kenneth Fulcher  
06/30/44 - 3/15/26**

James Kenneth Fulcher, 81, of Beltsville MD passed away on March 15th 2026. Born June 30th 1944 to William Kenneth and Esther Mae Fulcher, Jim was known for his quick wit and clever jokes. His passion for playing the trumpet, learned from his father, ranged from school marching bands to classical performance, to jazz and big band music. He attended High Point High School and University of Maryland, majoring in math and music. Jim was known for his integrity and work ethic, regardless of the job. For decades Jim could easily be found perched on a wooden bench, in period costume, reveling at the Maryland Renaissance Festival or local Scottish & Celtic Festivals. Jim was predeceased by his wife, Patricia Lynn Kalec Fulcher. He is survived by his sisters: Gwen Freed and Linda Hopkins. And his children: Ian Christopher Fulcher, Megan Esther Rieker, Kirt Drew Fulcher, Jared Golden Fulcher, Owen Garr Fulcher, Gwynn Valentine Fulcher, nine grandchildren and three great-grandchildren.

**UPSTAGE ARTISTS**

continued from page 3

these themes.

*American Son* will be brought to life by four very talented local actors: Tiffany Jackson as Kendra Ellis-Connor, Doug Richesson as Scott Connor, Ned Kieloch as Officer Paul Larkin, and Edward V. Crews as Lieutenant John

Stokes. These are performers you won’t be able to take your eyes off during the play’s 90 minutes.

There will be seven performances of *American Son*:

- June 5 at 7:30 pm
- June 6 at 2:00 pm (*this performance will be followed by a talkback session with the actors and director*)
- June 7 at 2:00 pm

- June 12 at 7:30 pm
- June 13 at 7:30 pm
- June 14 at 2:00 pm

Tickets are \$15 and can be purchased at [www.upstageartists.com](http://www.upstageartists.com) or at the door. Seating is limited, so purchasing tickets online is always the safest option. Performances will be held at Emmanuel United Methodist Church, 11416 Cedar Lane, Beltsville, MD 20705.

**NEWS YOU CAN USE**

continued from page 1

Recently, I’ve received calls from several senior citizens about suspicious calls they have received. Scams are coming at us from multiple directions: phone calls, text messages, and emails.

**Safety Tips:**

- Never give anyone who contacts you your account numbers, Social Security number, driver’s license number, car registration number, or home address.
- Do not open attachments or links in emails unless you are sure of the sender. Go the extra step and contact the sender before opening any attachments.
- E-ZPass does not suspend your driver’s license if you do not have enough money in your account.
- E-ZPass does not send text messages regarding your account.
- Last but not least, law enforce-



The Beltsville West Park is getting a facelift!

ment from a city, town, county, state, or federal agency (Secret Service, FBI, U.S. Marshal, Homeland Security, ICE, Border Patrol) will not call, text, or email you. If they do call, get their name, badge number, and office phone number, and tell them you will call them back.

Criminals/scammers are spoofing legitimate law enforcement phone numbers. Bottom line: if law enforcement wants you, they will come and get you. Legitimate

law enforcement does not ask you for money. Legitimate law enforcement does not tell you to take cash from your account and deposit it into a machine similar to an ATM.

There have been several reports of criminals/scammers impersonating law enforcement officers to scam money. Remember what they say: “A fool and his money are soon parted.” Play it safe—don’t be fooled by con artist criminals!

I can be reached at [karenmcoakley@gmail.com](mailto:karenmcoakley@gmail.com)

# Calverton Grocery Outlet

**We are very thankful to be a part of this community  
and are grateful for your support!**

**We have a great variety of special buy grocery items, and a  
great assortment of fresh produce fresh meat, deli and dairy items.**

**Open 8 a.m. - 9 p.m. EVERYDAY**



**11705 Beltsville Dr., Calverton Md. | 301-960-4851**

## Second Annual Spring Street Fair Returns to College Park on May 17

The community is invited to welcome the season at the **Second Annual Spring Street Fair**, a lively afternoon celebration filled with food, entertainment, and family-friendly activities.

The event will take place on **Sunday, May 17, from 12:00 PM to 4:00 PM** at **9217 51st Ave, College Park, MD 20740**. Designed for attendees of all ages, the Spring Street Fair brings together local vendors, artists, performers, and residents for a festive celebration of spring.

Guests can enjoy a wide range of activities, including:

- Arts and crafts vendors featuring local artisans
- Cooking demonstrations from local chefs
- Interactive planting and painting activities
- Children's crafts and hands-on activities
- A variety of food trucks
- Live music throughout the afternoon
- Wandering performers and seasonal entertainment

The Spring Street Fair offers a unique opportunity for the community to come together, support local businesses, and enjoy a day of creativity and connection.

For a full schedule of events and additional details, visit: [www.collegeparkmd.gov/springfair](http://www.collegeparkmd.gov/springfair)

## Tech Sense By John Bell

# Open Source Hardware

Last month we talked about the Raspberry Pi. I realized we hadn't talked about some of the other electronic devices used to build things for over a decade. This month, I will re-introduce some other devices useful for building electronic projects. The Raspberry Pi is open-source software, but the hardware is not open source. Today we will look at open-source hardware. In summary, open-source means that the intellectual property is free and available for others to use without the need to pay licensing fees.

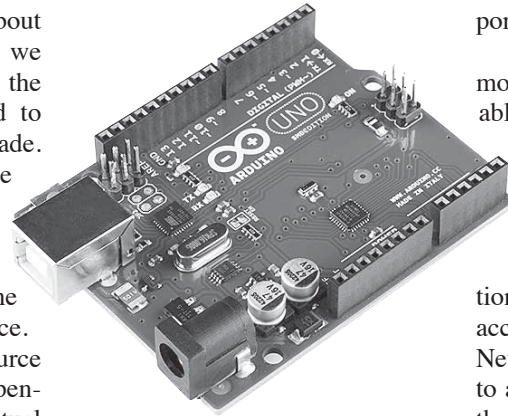


Photo courtesy Wikipedia Commons  
Arduino

### Arduino

Originally, the Arduino was a small series of controller devices developed to help new engineers learning to apply controllers to new projects. Arduino provided software development environment to program the devices, mostly using the C programming language. The boards could handle both digital and analog inputs and outputs. They also provided analog to digital conversion capabilities.

The Arduino development system connects the Arduino to a

port Linux on the device.

There are now many different models of Arduino devices available. Newer models offer additional features, some including Wi-Fi and Bluetooth capabilities. Some of the newest Arduino's are much more powerful than the traditional controllers. They can now accept an entire Linux OS and add Neural Processing Units (NPU) to assist with some AI support on the device.

### Beaglebone

Texas Instruments created the Beaglebone for use by college projects. Like the Arduino, the Beaglebone pre-existed the Raspberry Pi but like the Arduino, the Beaglebone is open-source hardware. The last time I wrote about it, the Beagle Bone Black (BBB) with the most current model. The Beagle Bone has always run the Linux OS. The BBB includes 4 GB of flash memory, and 512 MB of SD-RAM with Debian Linux installed.

There are now a large number of new versions of Beagle com-

**TECH SENSE**  
continues on page 14

**ROLEN**  
HEATING AND AIR CONDITIONING  
LICENSED • BONDED • INSURED



# HOME EQUITY LOANS & LINES OF CREDIT (HELOC)

# A WAY FORWARD STARTS AT HOME



**PRINCE GEORGE'S**  
COMMUNITY FEDERAL  
**CREDIT UNION**

[WWW.PRINCEGEORGESFCU.ORG/HOME-EQUITY](http://WWW.PRINCEGEORGESFCU.ORG/HOME-EQUITY) | 301.627.2666

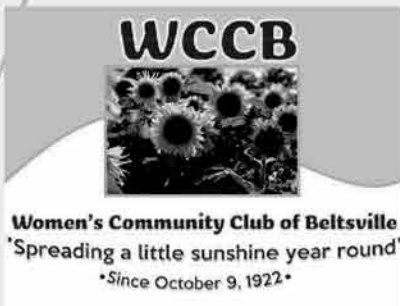
Available on owner-occupied, primary residential properties and vacation homes in most states and the District of Columbia, except Alaska, Hawaii, and Texas. Offer may be subject to IRS reporting; please consult with a tax professional as to reporting requirements, as this offer is not intended to provide tax advice or guidance. The Home Equity Line of Credit (HELOC) has a variable interest rate based on the Wall Street Journal Prime Rate and is subject to change quarterly. The monthly payment is 1.00% of the outstanding balance established and fixed at the time of each advance. The floor is 4.00%. The rate cannot increase or decrease by more than 2.00% in a calendar year, and the maximum rate is 18.00%. Other credit terms apply.



Brought to you by:  
**Parks & Recreation**  
M-N C P P C  
live more, play more  
pgparks.com

BELTSVILLE COMMUNITY CENTER  
3900 SELLMAN ROAD, BELTSVILLE  
301-937-6613; BELTSVILLECC@PGPARKS.COM

# BELTSVILLE DAY



**SATURDAY, MAY 9, 2026**

**12 NOON - 4PM**

**FREE ADMISSION\*\*  
FOR ALL AGES**

**MUSIC, GAMES, FACE PAINTING, ARTS &  
CRAFTS\*\*\*, VENDORS, FOOD & MORE**

**\*\*VENDORS WILL HAVE FOOD AND OTHER ITEMS FOR SALE**

**\*\*\*THANK YOU TO THE WOMEN'S COMMUNITY CLUB FOR  
THEIR DONATION**

**PRINCE GEORGE'S COUNTY PUBLIC SCHOOLS IS NOT SPONSORING, ENDORING, OR RECOMMENDING  
THE ACTIVITIES ANNOUNCED IN THIS FLYER/MATERIAL.**

Connect with us!

@pgparks



- The Department of Parks and Recreation encourages and supports the participation of individuals with disabilities. Register a minimum of two weeks prior to the program start date to request and receive a disability modification.
- Customers who are deaf, hard of hearing, or have a speech disability, call Maryland Relay 7-1-1.
- Language interpretation is available at all facility front desks. Please ask for assistance.

# Calendar of Events

## COLLEGE PARK AVIATION MUSEUM

Address: 1985 Corporal Frank Scott Dr., College Park, MD 20740. Phone: 301.864.6029. Fax: 301.927.6472. E-mail: collegeparkaviation@pgparks.com. Regular hours of operation: Open Tuesday – Sunday from 10 a.m. to 4 p.m. Closed Mondays and some holidays (double-check with the museum regarding the specific holidays). Special events may have different costs and hours of operation. General admission: Adults/\$5; Seniors/\$4; Children and Students with ID/\$2 (1-year-old and under, free). The museum exhibit area highlights 10 unique aircraft and objects relating the history of early aviation at the College Park Airport. For special events see [www.pgparks.com/facilities/college-park-aviation-museum](http://www.pgparks.com/facilities/college-park-aviation-museum).

### STEAM HOUR

Two dates: Sat., Apr. 25 and Sun., Apr. 26 from 10:30 a.m. to 11:30 a.m. each day. Join our educators at this hands-on activity table where creativity takes flight! Perfect for budding engineers and aviation enthusiasts, this interactive program allows visitors to design and build their own creations. Whether you're constructing airplanes, airports, or inventing something entirely new, the STEAM Hour encourages you to dream big and bring your ideas to life. Drop in anytime during the hour for an opportunity to explore the wonders of aviation through play. This program is ideal for learners ages 6 – 12 and is FREE with museum admission. No registration required.

## NATIONAL WILDLIFE VISITOR CENTER

Main phone: 301.497.5772. Website: <https://www.fws.gov/refuge/patuxent-research/events>. Address: 10901 Scarlet Tanager Loop, Laurel, MD 20708. The entrance is accessed from Powder Mill Rd. between the Baltimore–Washington Pkwy. and Rt. 197. The grounds are open from sunrise to sunset daily, except Tuesdays when they close at 4 p.m. Regular business hours for the building are Wed. – Sat. from 10 a.m. to 4 p.m., except for Federal holidays.

- **Free admission, parking, exhibits, and programs.**
- **Miles of walking trails.**
- **Great for birdwatching and photography.**
- **All dogs must be kept on a leash** (no longer than 6 feet) for their own safety as well as that of other visitors and wildlife.
- **Weather closures:** Hours of access may be altered as needed to clear roads and grounds.

### SCHOOLS AND YOUTH GROUPS

Invitation to enjoy educational species exhibits, the grounds and trails, bird blind, and pollinator gardens. There is a patio for picnics. Send your questions to Jason at [michael\\_cangelosi@fws.gov](mailto:michael_cangelosi@fws.gov).

### AGENTS OF DISCOVERY

Sunrise to sunset daily, except only until 4 p.m. on Tuesdays. All ages. This

is an outdoor self-guided nature-challenge game on the grounds. Download free phone app at home first. Complete challenges and earn a patch. Play: <https://fws.gov/media/agents-discovery-patuxent-research-refuge>.

### KIDS DISCOVERY CENTER

10 a.m. to 12 noon (35-minute time slots, on the hour). Free. Ages 3 – 10, w/adult. Crafts, puzzles, games, nature exploration.

- **April theme:** Turtles!
- Registration is strongly recommended: Call 301.497.5772 during regular business hours. For large groups please contact [michael\\_cangelosi@fws.gov](mailto:michael_cangelosi@fws.gov).

### VOLUNTEER FOR THE MONARCH MAGIC CENTER

Open from 10 a.m. to 4 p.m. when the Visitor Center is open. Get ready for the Monarch Butterfly season! See the Monarch Butterfly life cycle video. All ages. Consider becoming a volunteer for this fun and educational exhibit. Call 301.497.5772 when the Visitor Center is open and sign up for a **Butterfly Team** overview presentation.

### HOLLINGSWORTH WILDLIFE ART GALLERY

Free. All ages. Open when the building is open. The art gallery is next to the bookstore.

- **Art Reception:** Sat. Apr. 4 from 1 p.m. to 3 p.m.
- **April artist:** Barbara Dahlberg, who specializes in art quilts featuring wildlife and nature themes in creative, original designs.

### WINGSPAN GAME DAYS

Fri., Apr. 10 and Sat., Apr. 25 from 10 a.m. to 1 p.m. both days. Ages 12+. No experience needed. Play the award-winning board game and learn more about birds! Use our game or bring yours and sign in at the Front Desk to play.

### FAMILY FUN

This educational exhibit is staffed on Fri., Apr. 17 and Sat., Apr. 18 from 10 a.m. to 1 p.m. both days. It is open to individual study from 10 a.m. to 4 p.m. Wed. – Sat. All ages.

- **April theme:** Reduce, Reuse, Recycle. On average we throw away almost 5 pounds of trash each day! Explore alternatives with us. This is a drop-in program; come and go as you wish.

### WILD BIRD MEET & GREET

Sat., Apr. 25 from 2 p.m. to 2:30 p.m. Join us in the Visitor Center lobby for a drop-in Meet & Greet with our ambassador live birds, Eastern Screech Owls! Bring your camera and your questions. All ages.

## LAUREL–BELTSVILLE SENIOR ACTIVITY CENTER

Masks are optional. Contact the center for updates. Membership is free for Beltsville residents who are 60 years old or older. Regular hours of operation are Mon. – Thur. from 8 a.m. to 8 p.m., Fri. from 8 a.m. to 5 p.m., and

Sat. from 8 a.m. to 2 p.m. Closed on Sundays and most major holidays. Address: 7120 Contee Rd., Laurel, MD 20707, next to the University of Maryland Laurel Medical Center. Phone: 301.206.3350. Fax: 301.206.3387. Maryland Relay 7-1-1 for customers who are deaf, hard of hearing, or have a speech disability.

### LAUREL SENIOR FRIENDSHIP CLUB (LSFC)

The April meeting will be Wed., Apr. 1 at 10:30 a.m. Come celebrate our 60<sup>th</sup> Anniversary! The club meets on the first Wednesday of each month. For more information about the meeting, contact Pary Harris at 240.893.6738.

- The LSFC office is open Mon. – Fri. from 10 a.m. to 12:30 p.m. Call 301.206.3380.
- Please make lunch reservations two weeks in advance of each meeting. Call the office for details.
- Trips planned for 2026: *Be sure to register early since many trips sell out in advance!*
- Every Tuesday Bingo starts at 12 noon (doors open at 11 a.m.); fee for cards, NO admission fee. If any doubt about Bingo being held, call 240.788.2290.

### NARFE MEETING

Wed., Apr. 1 at 1 p.m. The Laurel Chapter 422 of the National Active and Retired Federal Employees (NARFE) invites you to attend our meeting with Prince George's County Council Member Thomas E. Dernoga, District 1. Mr. Dernoga is leaving his elected office in December. He has been asked to provide an overview of his signature accomplishments during his tenure on the Prince George's County Council as well as county updates, current bills—especially as they relate to seniors and/or active and retired federal employees—and his plans once he leaves his position. For more information contact Pat Farmer at 240.762.3895.

### ROSIE THE RIVETER ASSOC. MEETING

Sat., Apr. 25 at 1 p.m., followed by a musical presentation by *Rearview Mirror* from 1:30 p.m. to 2:30 p.m. Address: First United Methodist Church at 424 Main St., Laurel, MD 20707. Come to this free community gathering to celebrate spring! Iris Hirsch and Glenn Bullion of *Rearview Mirror* will play and sing songs from the 1940s to the 1980s, providing a full band sound, graphics, pictures, and videos. Enjoy the show! Singing along and dancing are welcomed. The Laurel Chapter of the American Rosie the Riveter Association meeting takes place in the Fellowship Hall and is handicapped accessible. For more information contact Pat Farmer at 240.762.3895.

## BELTSVILLE EVENTS

### NATIONAL AGRICULTURAL LIBRARY (NAL)

Address: 10301 Baltimore Ave.

in Beltsville. Main phone number: 301.504.5755. We continue to serve our customers remotely during regular business hours. Website: <https://www.nal.usda.gov/>; online information products are always available. NAL is on X at [https://x.com/National\\_Ag\\_Lib](https://x.com/National_Ag_Lib). The National Agricultural Library (NAL) is one of five national libraries of the United States. It houses one of the world's largest collections devoted to agriculture and its related sciences. See nutrition information for every stage of life at <https://www.nutrition.gov/>. Get *MyPlate* nutrition information for babies and toddlers via the free Amazon Alexa app. To learn more, visit [www.myplate.gov/myplateassistant](http://www.myplate.gov/myplateassistant).

### YOUNG AT HEART CLUB

Thur., Apr. 16 at 10:30 a.m. Address: the Beltsville Community Center, 3900 Sellman Rd., Beltsville. The Beltsville Young at Heart Club meets on the third Thursday of each month (weather permitting) and is for residents who are 55 years of age and older. Contact Lois at 301.498.9736 for more information.

### BELTSVILLE LIBRARY EVENTS

**Closed Sun., Apr. 5** for Easter. Address: 4319 Sellman Rd., Beltsville, next door to the police station. The main phone number is 301.937.0294. TTY: 301.808.2061. *Ask a Librarian* telephone reference is available when the library is open; call 240.455.5451. Regular hours of operation are Mon., Thur., and Fri. from 10 a.m. to 6 p.m.; Tue. and Wed. from 12 noon to 8 p.m.; Sat. from 10 a.m. to 5 p.m.; and Sun. 1 p.m. to 5 p.m.; closed on most major holidays. See [www.pgcmlls.info/location/Beltsville](http://www.pgcmlls.info/location/Beltsville) for online services and information about other county library branches and programs.

### PROGRAMS FOR CHILDREN

#### KIDS ACHIEVE CLUB

Meets every Tuesday at 4 p.m. Volunteers provide homework help for 1<sup>st</sup> – 6<sup>th</sup> graders. Please register online at <https://www1.pgcmlls.info/events>.

#### TAIL WAGGIN' TUTORS

Sat., Apr. 11 from 3 p.m. to 4 p.m. Each child will read for 15 minutes to a friendly, trained therapy dog. Bring a book or choose one from the library. First come, first served.

### PROGRAMS FOR CHILDREN AND FAMILIES

#### READY 2 READ STORYTIME

Mondays, Apr. 4, 11, and 18 at 10:30 a.m. Bring your toddler for a joyful session of stories, songs, and fingerplays! This engaging experience is perfect for sparking imagination and fostering a love of reading in little ones. Ages 2 – 3.

#### LEGOS: BRICKS AND BEYOND

Meets every Wednesday from 3:30 p.m. to 4:30 p.m. in the large meeting room. Build, create, and explore

with legos! With plenty of pieces and endless possibilities, kids can let their imaginations take the lead in this free-style building session.

### READY 2 READ ART

Thur., Apr. 2 from 10:30 a.m. to 11:30 a.m. in the large meeting room. Celebrate *Love Your Library Month* by diving into the colorful world of art with stories about the library and reading. Afterwards create artwork of your own on a tote bag! (While supplies last.) Registration required. Ages 3 – 5.

### SPANISH–ENGLISH READY 2 READ STORYTIME

Thursdays, Apr. 9, 16, 23, and 30 at 10:30 a.m. Ages 3 – 5.

### STEM-FUN: RAINBOW RAI

Thur., Apr. 16 at 4 p.m. in the large meeting room. Dive into the world of science, technology, engineering, and math with fun, hands-on experiments and activities! Learn about how precipitation occurs through a simulated raincloud as well as the different stages of the water cycle. Ages 8 – 12.

### PROGRAM FOR TEENS

#### TEEN ACTION GROUP (TAG)

Two dates: Mon., Apr. 6 and Mon., Apr. 20 at 4 p.m. each day. Earn community service hours while making a real impact! Join TAG to contribute to your community, meet new friends, and have your voice heard at the library.

### PROGRAMS FOR ADULTS

#### WORKFORCE RESOURCE TOOLKIT SERIES

• Tue., Apr. 7 from 6 p.m. to 7:30 p.m. **Learning Express Library.** Explore practice tests for college entrance, employment, and citizenship exams, and access tutorials designed to strengthen your math, reading, and writing skills. This session workshop also includes sessions on Academic Skills and Test Preparation, Career Development and Job Readiness, as well as Skill Building and Professional Development to support your success.

• Tue., Apr. 14 from 6 p.m. to 7:30 p.m. **LinkedIn Learning.** Discover LinkedIn Learning, including more than 16,000 courses available in seven languages on an easy-to-use platform. Gain new skills in animation, business, design, marketing, programming, and more to broaden your knowledge and advance your career.

#### ENGLISH CLASS: BEGINNER / CLASES BÁSICAS DE INGLÉS

Meets every Wednesday from 6 p.m. to 7:45 p.m. Are you starting your journey to learn English? This class is designed for beginner-level learners who want to practice and improve their skills. Registration is required.

## Club News



District 22-C Club Officers Received Training at Emmanuel United Methodist Church

## Beltsville Lions Club

Members of the Beltsville Lions Club are mourning the death of Lion Richard "Rick" Zerbe, who passed away on 5 March. He served in several capacities in the Lions Club, including Club President, and Board of Directors member. He was a Melvin Jones Fellow. Rick was always friendly and outgoing. His presence will be sorely missed.

Rick retired from the U.S. Marine Corps as a Master Sergeant after decades of outstanding service. His military bearing was evident in his service as an usher at Emmanuel United Methodist Church.

The Club held its annual election of officers on 5 March. The new officers will serve from 1 July 2026 to 30 June 2027. Elected President is Lion Ted Ladd, Vice President Camillo DiCamillo, Immediate Past President Ervin

Whitehead, Secretary Nicholas "Nick" Barbieri, Treasurer Andy Rolle, Membership Chair Mae Whitehead, and Board Directors Nancy Abernethy, Fatima Barrie, Timothy Brown, Mary Ann Hanson, Ann Ladd, Suzy Mendelsohn, Paul Melngo and Vicky Malengo.

Club members are looking forward to a health fair at Beltsville Academy scheduled for Saturday, 11 April, from 10 am to noon. They will provide free vision screening.

Also on the agenda is participation in Beltsville Day on 9 May from 10 am to 4 pm. The Lions plan to once again offer free vision screening to all.

The Beltsville Lions have worked to help people in the Beltsville community for 68 years. Our members are men and women who are committed to helping those less fortunate than they are.

The help we provide is not publicized very often, but the effects of the help are good, and we know it.

We are part of a Lions District (22-C) that includes Clubs in the five Maryland Counties of Montgomery, Prince George's, Charles, Calvert, and St. Mary's plus Washington, D.C. We often exchange visits with other Clubs and have made many friends who are also committed to helping others. There is a keen sense of camaraderie among Lions involved in this volunteer work. Maybe you should consider joining the Beltsville Lions Club. If so, drop a line to PO Box 252, Beltsville MD 20704, or find our display at Beltsville Day on 9 May.

## BARC

continued from page 6

modified without an act of Congress. I can see both sides, having reviewed the materials handed out and listened to folks speak about this issue. They care about having BARC land protected, since the current administration has already threatened it with closure, downsizing, etc. They don't want it developed at the whim of an administration that cares little for science or for laws. It also makes sense (to me) to enclose the area of NASA into Greenbelt since the entrance to NASA Goddard is within Greenbelt boundaries. But on the flip side, the lack of cooperation, transparency, and reaching across the city lines makes little sense. To be sure, this agenda for the meeting with the annexation was discussed and shared widely in Greenbelt; surely it couldn't have been too hard to share the same information with Beltsville residents, even as our elected officials were also informed? I will also say that this is a good reminder too, as best as anyone can these days with everything going on at the federal level, to keep as informed as possible on local levels.

I did have one local resident state if Beltsville were incorporated, we'd likely be able to throw more weight around in such conversations. I've heard arguments on both sides of that conversation for a few years, and I honestly think it's a worthwhile conversation to have, especially now, given how many changes our commu-

nity has faced in recent years.

While I was at the meeting, many folks who spoke felt that the three parcels currently under review weren't enough, that more land should be annexed. The current parcel up for review is #3 in the picture. It would bring the whole area into Greenbelt. The other two parcels are also up for annexation, but at a later date, after more county council meetings open to the public. The mayor also raised the idea of developing a museum to showcase the history of BARC and the New Deal on the land, if annexed. I do love the idea of showcasing history, but I do wish that the spot would be better located if a museum were to be built.

Once all of the comments were entered into the minutes, the council clarified that "they were changing the municipal boundaries...not acquisition, but annexation" i.e. they were not purchasing the land, because again, it's federal. They also stated they were following state annexation guidelines (an FYI for anyone wishing to read up: <https://planning.maryland.gov/Documents/OurWork/MML-Annexation-Handbook.pdf>). The motion did carry unanimously so the next steps are the open comment period and after which, provided there are no objections/appeals/etc, the boundaries for Greenbelt would be redrawn to include Parcel 3.

I plan to attend the follow-up meetings for the other two parcels and will have updates as soon as they are available!

## Church News

### St. John's Episcopal Church, Zion Parish

Located at 11040 Baltimore Avenue in Beltsville MD;  
at the corner of Route 1 & Powder Mill Road  
The Reverend Joseph M. Constant, Rector  
[www.saintjohnsbeltsville.org](http://www.saintjohnsbeltsville.org) 301-937-4292  
[office@saintjohnsbeltsville.org](mailto:office@saintjohnsbeltsville.org)

Welcomes you to a Resurrection Celebration Week  
**Sunday of the Passion: Palm Sunday, March 29, 2026-**  
10:00 a.m. - Holy Eucharist

(In-person, streamed live via Facebook and YouTube)  
**Wednesday, April 1, 2026-12:00 Noon** - Holy Eucharist  
and Healing Service (in-person only)

**Maundy Thursday, April 2, 2026 -7:00 p.m.** -  
Holy Eucharist and Stripping of the Altar

(In-person, streamed live via Facebook and YouTube)

**Good Friday, April 3, 2026- 12:00 Noon** -  
Stations of the Cross (In-person)  
7:00 p.m. - The Passion and Prayers

(In-person, streamed live via Facebook and YouTube)

**Holy Saturday and Easter Vigil, April 4, 2026-**

Joint Service with Epiphany Episcopal Church, Forestville, MD  
7:00 p.m. - Holy Eucharist

(via Zoom call office for information 301.937.4292)

**Easter Sunday of the Resurrection of the Lord, April 5,  
2026- 9:00 a.m.** - Holy Eucharist

(In-person, streamed live via Facebook and YouTube)  
and 11:30 a.m. - Holy Eucharist (In-person only)

**An Easter Egg Hunt follows the 11:30 a.m. service  
for children 10 and under.**

IF IT'S  
REAL ESTATE,  
IT'S  
ROBERTA!!



TAYLOR  
PROPERTIES

175 Admiral Cochrane Dr. Suite 112 Annapolis, MD 21401

**ROBERTA**  
**301-937-3124**

Experienced, Reputable • Distinguished Sales Club  
Full time professional • CRS, GRI, SFR



Associate Broker

E-mail: [robertayaklich@gmail.com](mailto:robertayaklich@gmail.com) • Office: 301-970-2447




**A MUST SEE, UPDATED, MOVE-IN READY HOME!!!**

Fantastic floor plan on this immaculate 3 BDR, 2 BA home, spacious laundry with main level exercise room. Minutes to Greenbelt Metro, University of Maryland, MARC train, I-95, 495, rte 29, B-W Parkway, ICC and great shopping areas. Updated kitchen and baths, level entrance back yard with large storage garage. A must see!!!

**\$493,000**

# Beltsville News CHURCH DIRECTORY



**ALL ARE WELCOME HERE!**  
**Emmanuel United Methodist Church**  
 Sunday Morning Worship 10 AM  
 11416 Cedar Lane, Beltsville, MD 20705


Join us for meaningful worship, inspiring music, and a warm, welcoming community.

Can't attend in person? Watch our live broadcast at [www.eumcbeltsville.com](http://www.eumcbeltsville.com)

*"For where two or three are gathered in my name, I am there among them"*

**Upcoming Events**

April 5: Easter Sunday Service! He is Risen!  
 April 12: Monthly Potluck following worship  
 April 25: 8am-11am Free Food Distribution - all are welcome



Rev. Dr. Andrea Middleton King, Pastor  
 (301)937-7114 † office@eumcbeltsville.com  
[www.eumcbeltsville.com](http://www.eumcbeltsville.com)  
 Find us on Facebook  
<https://www.facebook.com/groups/EUMCBeltsville>  
 Follow us on Instagram @eumc\_beltsville



A Mission Parish of the Russian Orthodox Church Outside Russia  
 Located in Twin Chimneys Office Park  
 10760 Baltimore Ave, Beltsville, MD

Evening Vigil: Sat. 5:00 PM  
 Hours & Divine Liturgy: Sun. 9:40 AM

All Services in English

Fr. George Johnson, Rector  
 301-572-5738  
[www.holyapostlesorthodoxchurch.org](http://www.holyapostlesorthodoxchurch.org)


**Holy Apostles Orthodox Church**  
 Come and see.

**Abiding Presence Lutheran Church**  
 10774 Rhode Island Avenue  
 301-937-7646



Sunday Worship: 10:00 a.m.  
 Rev. Jongkil Na  
[www.APLChurch.org](http://www.APLChurch.org)

**Come and Join Us**  
 Located in the Beltsville Professional Center



**St. Joseph Catholic Church**  
[www.stjosephbeltsville.org](http://www.stjosephbeltsville.org)

Pastor: Rev. Shaun T. Foggo  
 Deacon: Rev. Mr. Armando Jimenez

Adult, Youth and Children Faith Formation  
[reled@stjosephbeltsville.org](mailto:reled@stjosephbeltsville.org)

Director: Mrs. Helene H. Stever  
 St. Joseph's Regional Catholic School  
[www.stjosrcs.org](http://www.stjosrcs.org)  
 Principal: Mrs. Erin Meunier

11007 Montgomery Road  
 Beltsville, MD 20705  
 301-937-7183

Masses: Sat Vigil 5:00pm, Sun's 8:30am\*, 10:30am, and 12:15pm (Spanish)  
 Monday-Friday 8:00am; Wed 9:30am; and 1st Sat's 8:00am

\*The Mass on Sunday 8:30am is also live streamed, connect with us on Flocknote for the link. \*\* The Mass on Wednesday is only when School is open.

**St. John's Episcopal/Anglican Church**

11040 Baltimore Avenue Beltsville, MD 20704  
 301-937-4292 • [www.saintjohnsbeltsville.org](http://www.saintjohnsbeltsville.org)  
 The Reverend Joseph M. Constant, Rector

Join us for In Person Worship every Sunday at 10 AM  
 Youth Sunday School 11:15 AM

To view services online:  
 Go to <https://www.facebook.com/StJohnsZionParish/Live/>

Other services online via Zoom: Wednesday Noonday;  
 Thursday Bible Study and Compline 7 PM via Zoom

Contact the Church office if you are interested in any of these resources

Our Mission: To Share God's love with everyone to bring hope and change lives.



**First Baptist Church of Beltsville (SBC)**

4700 Odell Road Beltsville, MD 20705  
 301-937-7771  
[www.fbcbeltsville.org](http://www.fbcbeltsville.org)  
 Keith Holland, Pastor

You are welcome to join us for

**Easter Activities & Worship Services**



**Community Easter Egg Hunt**  
 Saturday, March 28  
 10:00-11:30 a.m.  
 For children ages 2 - 12 years

**Palm Sunday:** March 29 \*11:00 a.m. worship service

**Maundy Thursday:** April 2, 7:00 p.m.

**Easter Sunday, April 5**  
 6:30 a.m. Sunrise Service  
 7:30 a.m. Continental Breakfast  
 \*9:45 a.m. Bible Study (for all ages)  
 \*11:00 a.m. Worship Service

\*Childcare available for children up to 3 years old

## TECH SENSE

continued from page 10

puters. Pocket Beagles (models 1 & 2) are closer to the small size of a raspberry Pi Zero but with the same performance and configuration as the BBB. The model 2 also provides a LiPo battery charger. I imagine this is to allow the board to run during brief power losses.

Two new Beagles in the V-series, one Red (Fire) the other Blue (Ahead) both based on the open-source Risk-V processors. The Risk-V processors are also open source.

New AI editions, the BeagleBone AI-64 and the BeagleBoneY. These include specialized processing features like specialized matrix multiplier processors, digital signal processors, vision-processing accelerators, and image signal processors. Sounds like this might be good for a robotics project.

The Beagles all support standard plug-in add-ons called "Capes". Raspberry Pi's call their add-ons "Hats" or "Bonnetts" for Pi Zero add-ons.

In general, the BeagleBone line of computers better fits embedded and industrial applications.

## ESP32

The ESP32 evolved from a series of very small boards designed to ease the task of adding wireless communications, Wi-Fi and Bluetooth, for electronic devices. First came the ESP-01. American "Makers" found the chip an affordable means to add Wi-Fi to their and adopted it. Following the ESP-01, the ESP8266 added a microcontroller and the ESP8265 internal memory. This created small devices that were programmable and if the task was small enough, the programs could be contained in the single device. Expressif Systems created the ESP8266 and leading the ESP32. The ESP32 is now available in a large number of variants and made by a very large number of vendors with many, many options. Vendors include Expressif, Sparkfun, Adafruit, and Arduino.

## Wrap Up

The Arduino came well before the Raspberry Pi and until recently didn't have the ability to support a full OS. The Raspberry Pi Pico is a substitute for the early generations of Arduinos and in many ways, I think of it as better solution. It is certainly less expensive at today's prices.

The Beaglebone also preceded the Raspberry Pi. I feel the Pi is a better computer for learning to compute. I can also do the kinds of things that I did at home, on a computer in the 80's. Yes, I had a Timex Sinclair, a Commodore Vic-20, and a Commodore-64. I believe my Raspberry Pi's can out-perform all of these, and even beats my Apple 2e, my father's TRS-80, and my first two generations of PC clones.

I have Arduino computers, and a

**TECH SENSE**  
 continues on page 15



**Check us out on Facebook! The Beltsville News**

Mental Health is a real and there are always two sides to a story. On March 16, a coworker had locked his keys in his work truck, and so I was designated to take a master key to him, downtown Dallas. I departed the station located next to DFW Airport and even though it was rush hour, I got to him in about 35 minutes, using side roads that had little traffic.

I had to get back to the station to return the Master key and then head out to Bishop Arts in West Dallas. To save time, I avoided the congestion of downtown Dallas traffic, and as I popped out the side road onto highway 114W, I was greeted by brake lights and the distinct red and blue lights in the distance, signs of police presence. "Another accident," I thought to myself. The highway splits at that point and if you are a driver is in the wrong lane and tries to switch lanes, the chance of a collision is very high as you have traffic approaching at speeds in excess of 60 mph.

I remained in my lane and as the line of cars inched forward, I realized there were more police lights in the distance, and three lanes of traffic were being forced to merge into one lane. I inched to the front of what had become a single lane of traffic, and the red light caught me.

At this point, I looked to my left and saw a wide perimeter had been cordoned off by the Irving Police Department. A dark gray tractor trailer had been isolated and apparently I could see a person standing outside of the driver's door, with one foot on the steps to get into the trailer and the other foot on the railings for the overpass. I wondered what could be the matter, but I wasn't going to speculate.

The road shut down, which started after 5 pm that day ended around 1239 a.m. the next day. Based on a statement from the Irving Police Department, there was an issue with a motorist and what appeared to be a standoff, was eventually resolved.

Now we know it was more than likely related to a mental health issue. We live in a wicked world. While searching for answers to what was going on, some folks resorted to the internet to peddle inaccurate information and very unpleasant comments. It is not right to use the misfortune of others, for your own entertainment. Some comments made fun of the situation. We need to show more empathy as human beings. There is a time for everything under the sun.

The same pattern showed itself in past month, when the tractor trailer went over the bridge and the driver died, some of the comments were inappropriate. We got to have more compassion as human beings.

This month, I had intended to write and give tips on how to adjust some living habits, to cope with the changes to the food supply chain. Increased gas prices will eventually lead to increased food costs. People need to slow down on buying food outside, to eat. Buy the ingredients and meal prep. You can do this on the weekend. Save the dining out experience for the weekend. I am guilty of it as well, where sometimes I get too lazy to cook, so I go to a food truck and get some food from the Mediterranean. The food is fresh. Desperate times call for desperate measures. Go to Walmart, Giant or Shoppers or anywhere else and purchase some chicken breast or any other part of your choice, put that in an air fryer or use a conventional stove.

Season and cook for a few minutes. You would have purchased some ingredients for a fresh salad or if you so desire, some vegetables. The time it would take you to drive to a fast-food place or wait in line for your order is about the same time it would take you to prepare a healthy meal for yourself. Do you remember to buy some lime or lemons, squeeze them and make some fresh lemonade? It costs you far less than a bottle of sugar-laden juice or soda. If you have children, show them how to squeeze lime or lemons and other citrus juice. They can make juice to take to school. You are not only teaching them a lifelong lesson, but you are saving them from addiction to the wrong drinks and food. More importantly, the money you just saved can be used on something else, like more groceries, a bill or just save for a rainy day or an extra gallon of gas. Finally, plan your movement properly – when you leave home to go out to work, on your way home, stop and do everything you need to, so you are not going back and forth, wasting time and gas. As your schedule permits, get your children or grandchildren into the kitchen with you. Teach them and sow the seeds of cooking or baking in them. We all had this back in the day. My mother had three boys before my sister was born – we did not have choice and had to be in the kitchen with her. We all learned how to bake, cook, and churn ice cream the old-fashioned way and I was the dishwasher. Till today, I still wash everything by hand. I do not know how to use a dishwasher, and I am not interested in learning. (We leave that discussion for another day).

**TECH SENSE**

continued from page 14

Beaglebone Black. I bought these for some IoT projects. I have an IoT project that I am planning for one of my Pi Pico's. I have more than a dozen Raspberry Pi's and

I am using them almost all of the time, primarily for experimenting, testing and monitoring other systems and running cameras. Each one of these devices has purpose for me and they are fun to play with and learn.

There are a lot of other open-

source hardware device out there. Most are very affordable and all are a chance to learn and have fun. If you enjoy learning about technology, I encourage you to buy one or two of these, the Raspberry Pi is a good starter and get involved.

See you next month.

**Classifieds • Call 301-257-3408**

**SERVICES**

**HAULING AND JUNK REMOVAL.** Complete Clean Out - Garages, Homes, Construction Debris, etc. Licensed, insured, free estimates. Mike Smith 301-346-0840. 01/27

**HELP WANTED**

**CERTIFIED PUBLIC ACCOUNTANTS** Accounting, Bookkeeping, Payroll, Tax Planning, Preparation & Representation Budgets, Analyses, Support Services, NPOs & Govt. Contract Compliance, Indirect Rates, DCAA, Incurred Costs, Submission, DCAA & More. 30Yrs+, Incorporations & Entity Choice Selection Audits, Reviews, Compilations Plus Sarbanes-Oxley Compliance Services. inforequest@bai-tech.com When CPA Experience & Results Matter. Call 301-608-2248. https://bai-tech.com. Creating Powerful Business Affordable Solutions For America & Beyond. 01/27

**VOLUNTEERING**

**CALLING ALL CAT LOVERS!**

Do you enjoy cats and can spare one hour a week? Beltsville Community Cats would love for you to join our awesome Colony Support Team to help feed kitties and experience their gratitude firsthand! Contact 240-444-8353 or email hello@beltsvillecats.net 01/27

**JOE THE PLUMBER**

For all your plumbing needs

**Just call Joe the Plumber  
301-693-5885**

*Call or text for quote  
20 Years Experience*

Water Heaters - Sump Pumps - Toilets  
Disposals - Faucets - Leaking Pipes

**HALL RENTALS**

(CATERING)

Luncheons—B'Day Parties—Anniversaries—Weddings

**College Park American Legion—Post 217**

9218 Baltimore Blvd. (301) 441-2783

College Park, MD 20740



Contact Gary Kingery



**Check us out on Facebook!  
The Beltsville News**

**Boospherous Boonipherous Bojangles Barnaby III, a.k.a. BOO** By Joseph West





AUTHORIZED BY FRIENDS OF MICHELLE GARCÍA: MARITZA GARCÍA, TREASURER

# Top 3 reasons we're for **Michelle García,** Democrat for County Council.

**1. For 15 years, she's worked with us, solving problems for Beltsville residents.** She started as Joseline's Chief of Staff, then as Community Liaison for our team, and most recently as Councilmember Tom Dernoga's Chief of Staff.

**2. No one works harder, no one cares more.** We hear that again and again from Beltsville residents. Michelle is a tireless advocate who goes above and beyond — and puts in the extra hours — to make sure people get the help they need.

**3. Like our whole Team, she's a stand up Democrat.** She understands that working families in Beltsville are under attack by Trump and his MAGA allies — from BARC and health insurance to American democracy itself. Michelle is the kind of fighter we need in these dangerous times.

## Help us help Beltsville.



BY AUTHORITY, TEAM 21 SLATE

*21st District Democratic Team*

### Rosapepe

Joseline Peña-Melnyk

Ben Barnes

Mary Lehman

**If you want to help us,** e-mail us at [contact@michellejgarcia.com](mailto:contact@michellejgarcia.com), call us at (301) 642-0410, or visit our websites, [21stdistrictdelegation.com](http://21stdistrictdelegation.com) or [michellejgarcia.com](http://michellejgarcia.com)