

The Beltsville News

An All Volunteer Newspaper

The Beltsville News
11722 Emack Rd.
Beltsville, Md. 20705

Vol. 71, Number 2

Beltsville, Maryland

February 2023

PRSR STD
U.S. POSTAGE
PAID
Permit #3173
Beltsville, MD

Cub Scouts and Boy Scouts Do a MLK Day Service Cleanup

By Regina Halper

Cub Pack 1031 and Boy Scout Troop 1033 did our day of service for Martin Luther King Jr's holiday by cleaning up trash around the Beltsville Academy. We collected 15 tires, old metal, over 25 discarded masks, and lots of water bottles and other trash. Please make sure your mask makes it in the trash not in a ditch or field.

This month the Cub Scouts are working on their core requirements and reviewing outdoor concepts they learned this summer. We look forward to a camping weekend this spring and actually having a Blue and Gold Dinner not a cookout in the park.

If you are interested in join-



Pack 1031 and Troop 1033 do cleanup around Beltsville Academy for MLK Day of service.

CLEANUP

continues on page 2

NEXT ISSUE:

Submissions Due

No Later Than:

February 15

Paper Out:

February 25

On the Agenda

Beltsville Briefs

The Beltsville Young At Heart Club

By Lois Hamilton

January can be such a challenging month. The beginning of a new year might bring many new problems. Such was our January 19 meeting. I had to decide to cancel the meeting because so many people who volunteer with the club have gotten COVID, flu and other problems that we did not have enough "workers" to work.

So, we move onto the February 16 meeting. It will have a Valentine theme with entertainment from "Rearview Mirror" (from January), and a surprise gift for everyone who attends. We'll try to do "business as usual", but I may need to call on newer members to help, especially with the "goodies". Anyone interested, please call me at 301-498-9736. I would appreciate any help we can get. We still meet at 11:00 am at the Beltsville Community Center on Sellman Road.

No pay, but the feeling of satis-

BELTSVILLE BRIEFS

continues on page 11

UpStage Artists Kicks Off 2023 With A Comedy Classic, Arsenic and Old Lace!

After a very successful 2022 season and a much-deserved break, UpStage Artists is back to kick off 2023 with one of the most popular comedies of all time, Arsenic and Old Lace! The show opened on Broadway on January 10, 1941, and played for 1,444 performances before ending its initial run. The review for the play on opening night in the New York Times said it was "so funny that none of us will ever forget it." It starred Boris Karloff as the villain, Jonathan Brewster, who keeps getting mistaken for Boris Karloff in the play.

The play is a black comedy about the Brewster family, descended from the Mayflower settlers but now comprised of maniacs, most of them homicidal. The play begins when drama critic Mortimer Brewster's engagement announcement takes a back seat because he discovers a corpse in his elderly aunts' (Abby and Martha) window seat. Mortimer rushes to tell Abby and Martha before they stumble upon the body themselves, only to learn that the two old women aren't just aware of the dead man in their parlor;



Jenn Robinson (left) as Abby Brewster and Beltsville Resident Susie Mendolsohn (right) as Dr. Harper rehearse a scene from UpStage Artists production of Arsenic and Old Lace opening February 17.



they killed him! Between his aunts' penchant for poisoning wine, a brother who thinks he's Teddy Roosevelt, and another brother using plastic surgery to hide from the police—not to mention Mortimer's hesitancy about marriage—it'll be a miracle if Mortimer makes it to his

wedding. Arsenic and Old Lace is a classic black comedy about the only thing more deadly than poison: family."

The play's popularity meant Hollywood would come knocking, and it did. Arsenic and Old Lace was turned into a highly successful movie starring Cary Grant and directed by Frank Capra. Many of the cast of the Broadway show reprised their roles for the movie, but one star did not. Boris Karloff wanted

UPSTAGE
continues on page 2



Karen Coakley

Beltsville Comprehensive Community Cleanup

(See graphic on jump page for specifics)

Phase #1 will occur between February 21 - March 2. The cleanup area includes the Boundary of Sellman Road between Cherry Hill Road and Montgomery Road and all of the streets off of Sellman and Montgomery that back up to the park, plus Allview Drive, Nevis Drive, Blueridge Drive, Pocono Place and Shenandoah Drive.

Phase #2 will occur between February 27 - March 9. The cleanup area includes the homes behind Chestnut Hills Shopping center, along Sellman Road between Montgomery Road, Rhode Island Avenue and Powder Mill Road.

ON THE AGENDA
continues on page 7



RJ Berra Inc. / Services Unlimited

Tree and Stump Removal Experts

Our team is fully equipped to handle all your tree removal needs. Services offered are from a basic pruning to a full tree removal by crane.

Call Bob, your community tree service expert since the 1980's

301-384-4746 LTE#782

A licensed tree expert with the Maryland Department of Natural Resources



New Patients Welcome

Beltsville Dental Care

John J. Moynihan, DDS, PA

10760 Rhode Island Ave.

301-937-4448

Visit us at beltsvilledentalcare.com

IF YOU NEED HELP WE ARE HERE!

Si necesitas ayuda, estamos aqui!

301-937-8119

www.baccmd.org

Struggling with job loss, to pay rent, to get food, or need emergency help? The Beltsville Adventist Community Center (BACC) exists to help those in the Beltsville Community and beyond take the next step toward financial independence.

FIND US at 4220 Ammendale Road, Beltsville MD 20705, located in the house behind the Beltsville SDA Church



BACC Services

- Job Counseling Assistance
- Rental & Utility Assistance (on a case by case basis)
- Food Supplement
- Professional Counseling

On Site Agent of Dept of Social Services (DSS)

- SAIL: Apply for services on-line
- Food Supplement (FS)
- Medical Assistance for Families & Children (FAC)
- Maryland Children's Health Program (MCHP)
- Recertify—(Redetermination) -Dropoff documents
- Other DSS Emergency Assistance

Food and financial assistance HOURS:
Tues and Wed 9 am to 2 pm.

Office calling HOURS:
Mon through Thurs
9 am to 4:30 pm

We are celebrating our tenth year of operation

Share Your News!

Send your article submissions to News Director Rick Bergmann at editorbvnews@gmail.com

Beltsville News: Blast from the Past

(From the Beltsville News issue of February 2013)

By Ted Ladd

High Point High School Announcements: High Point High School is pleased to announce that senior Edward Adetwum was awarded a 100% Posse Scholarship to Pepperdine University. He was one of only 11 students in Prince George's County schools to receive this honor. The Winter Concert was enjoyed by all. The chorus, band and dance team participated in this memorable event. Dr. Pamela Bell-Smith reported that the concert was so well done, it was "like being at the National Theatre or seeing a Broadway Show."

Scout Troop 1033

By Kevin d'Eustachio, Scoutmaster

If you ever wanted to experience the challenges of 19th century life in Alaska, BSA Troop 1033 is looking for YOU. Troop 1033 is recruiting team members for the Klondike Derby on Saturday, February 11th, 2023. The Klondike Derby is a test of cold-weather survival skills including sled racing, shelter building and fire-making in extreme environments. Troop 1033 will be going to the National Capitol Area Council's Klondike Derby on February 11th in Cheltenham, Maryland (much closer than Alaska). If you think you've got what it takes to make a difference in the frozen tundra, and you are between 10 and 17 years old, contact Troop 1033 Scoutmaster Kevin d'Eustachio at kdeustachio@gmail.com.

Troop 1033 is celebrating sixty years in Beltsville this year and is ready to recognize their 100th (known) Eagle Scout. If you want to be a part of an American tradition, this year Troop 1033 is planning camping, canoeing, and rock-climbing adventures as well as a trip to a historic battlefield and a week-long sleep-away summer camp with archery, rifle shooting and sailing. The Troop meets at Emmanuel United Methodist Church on Cedar Lane on Sunday evenings. For more information, contact Scoutmaster Kevin d'Eustachio at kdeustachio@gmail.com.


UPSTAGE

continued from page 1

to do the film along with his cast-mates, but the producers of the show were worried that allowing Karloff time off from the show to shoot the movie would hurt their box office since he was the biggest draw in the cast. So, much to the dismay of Karloff, they wouldn't let him out of his contract.

UpStage is excited to bring this show to Emmanuel. The actors are filled with old and new faces, including Beltsville resident Suzie Mendolsohn, who will star as Dr. Rev. Harper and Lieutenant Rooney. Rick Bergmann directs the show. One of the wonderful things UpStage can do this time is that they have a special performance for the residents of Riderwood. The performance for them is free and will include a question-and-answer session with the cast after the show. UpStage is 100% about the community aspect of community theater, which is their way of giving back. They can do this because of the generosity of Emmanuel.

Arsenic and Old Lace show dates are February 17, 18, 24, and 25 at 7:30 pm and February 19 and 26 at 2 pm. Tickets are only \$10.00 (cheaper than a movie). Emmanuel United Methodist Church is 11416 Cedar Lane, Beltsville, MD 20705. You can buy tickets at www.upstageartists.com/tickets. So come on out and join UpStage for an evening of laughs with Arsenic and Old Lace!



The Beltsville News
An All Volunteer Newspaper

PUBLISHED BY THE BELTSVILLE-VANVILLE DISTRICT CITIZENS' ASSOCIATION INC.

News: Rick Bergmann, editorbvnews@gmail.com, 8 Center Street, Laurel, MD 20723. Enclose self-addressed stamped envelope if photo is to be returned. Accepted material may be edited. Letters to the Editor on local topics are encouraged. Names may be withheld upon request.

Advertising:
301-257-3408 Ted Ladd, 11722 Emack Rd., Beltsville 20705 • tedladd02@aol.com

Subscriptions:
One year is \$15. Send check to Beltsville News, 11722 Emack Road, Beltsville MD 20705

Editor Emeritas: Sally Ehrle

Staff Listings
Managing Editor/News Director: Rick Bergmann
Advertising Manager: Ted Ladd Business Manager: Ted Ladd

Supporting Staff Members: Jim Butcher, Ivy Christoffers, Karen Coakley, Bryant Davis, Rebecca Hutchings, Jason Inanga, Mariah McKenzie, Lynne Miller, Elizabeth Olson, and Nancy Thrush.

Circulation
Hard copies may be picked up at more than 50 locations in greater Beltsville, including the Beltsville Library, Wawa, Beltsville Community Center, Spicknall's Farm Market, schools, churches, restaurants and more. Many receive a monthly pdf of the paper via e-mail at no charge. To receive copies by email, go to www.beltsvillenewstoday.com, and enter your e-mail address.

Please join our Facebook page
(<https://www.facebook.com/groups/300944563420364/>)
and follow us at beltsville news on Instagram.
Check out our website: www.beltsvillenewstoday.com

CLEANUP

continued from page 1

ing Cub Scouts, contact Regina Halper at Pack1031cubscouting@gmail.com for information. We are a family scouting unit. We learn outdoor skills, citizenship, STEM, nature and do service. We are back in Beltsville Academy for our den meetings. And happy to be meeting in our usual place and learning about nature, doing service and hiking in the outdoors. We are mask optional and still cautiously progressing toward regular meetings.



Check us out on Facebook!

The Beltsville News



Beltsville Community Cats Serves Beltsville Residents and Businesses

Beltsville Community Cats (BCC) is completing its fourth year of using humane strategies to control and reduce the population of free-roaming community cats in the 20705 Zip Code area. This article explains our primary strategy, referred to as trap, neuter, vaccinate, and return (TNVR).

As BCC becomes aware of a community cat colony in Beltsville, a volunteer visits the site to get information on the number of cats being fed and who is feeding them, when and where they are being fed, and an estimate of the number that need to be spayed/neutered. The volunteer then secures a signed "Permission to Enter Property" form from the colony caregiver, homeowner, or business representative (for colonies on commercial or industrial properties).

A trapping plan is developed based on the availability of spay/neuter appointments. Trapped cats are taken to a vet or a clinic to be neutered, dewormed, vaccinated for rabies and FVRCP, and ear tipped. The left ear is tipped to provide visible evidence that the cat has been fixed.

On the day before the vet appointments a trapper or trapping team is deployed to the colony site to set and monitor traps. Cats that are trapped are recorded (color, breed, signs of illness, location where trapped, etc.) and transported to a volunteer's house to be held overnight and taken to the vet the next day. Following the surgery, the cats are transported back to the volunteer's house to be monitored while they recover from the surgery and anesthesia. This is important because cats cannot control their body temperatures while under the effects of

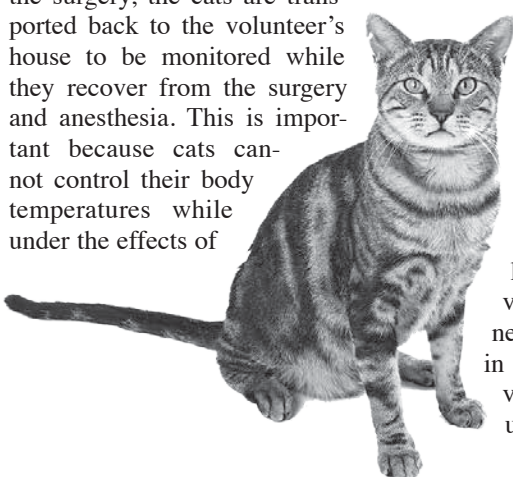


the anesthesia. The next day the cats are released back where they were trapped.

The cooperation of colony caretakers is critical to the ongoing maintenance of a colony and to BCC's success in trapping the cats. Caregivers can help by withhold food the day before and the day of the trapping event. This ensures the cats are hungry enough to go into the traps. Sometimes BCC volunteers hard-set the traps (i.e., both ends are secured to stay open) and ask the caregiver to feed inside the traps for 2-3 days prior to the trapping event. The cats get comfortable going in and out of the traps, making it easy to trap them when the trap is set.

BCC's TNVR program has been successful in trapping and altering over 1,165 cats since we began operating in March 2019. About half of those cats were released back to the place where they were trapped. The remaining cats were young kittens or friendly adult cats that BCC rescued, placed in foster care, and adopted out into "furr-ever" homes.

If you know of a community cat colony in Beltsville that is in need of TNVR, please contact BCC at 240-444-8353 or hello@beltsvillecats.net. To learn more about BCC, visit www.beltsvillecats.net. If you are interested in volunteering for BCC, visit our Rescue or Volunteer pages.



Bonnie Bartel

301-343-8887

Call, Text or Email
for an appointment

Bonsnobun@aol.com

Hair Design

10800 Rhode Island Ave.
Beltsville, MD 20705

The Crescent Nursery and Summer Program

Est. 1959

**Children 2-6 Years
and**

Before/After School Program

Qualified staff. A caring environment. Specially
planned programs. Snacks provided

OPEN ALL YEAR. ALL DAY

11723 Chilcoate Lane, Beltsville, MD
(301) 937-3133



Path of Life Healing Center

Personalized, Science-Based, Patient-Centered, Nutrition Consultations

Colon Cleansing | V-Steam | Body Wraps | Sauna Therapy

Diabetes	Food Allergies	Detoxification/Cleanse
Constipation	Pain Management	Weight Management
Hypertension	Fatigue/Insomnia	Chronic Illness

Now Accepting Cigna, Care First BC/BS, & Medicare Advantage

301-377-4523

Venetta Kalu, LON, CNS, ND

(Licensed and Board Certified Clinical Nutritionist)



www.pathoflifehealing.com

vkalu@pathoflifehealing.com

4600 Powder Mill Rd., Beltsville, MD

Prepare for power outages today

GENERAC®

WITH A HOME
STANDBY GENERATOR

\$0 MONEY DOWN + LOW MONTHLY PAYMENT OPTIONS

Contact a Generac dealer for full terms and conditions

**REQUEST A
FREE QUOTE**

CALL NOW BEFORE THE
NEXT POWER OUTAGE

(888) 770-7099

FREE
7-Year Extended
Warranty* – A \$695 Value!

*To qualify, consumers must request a quote, purchase, install and activate the generator with a participating dealer. Call for a full list of terms and conditions.



EXTENDED NEW YEARS SALE

**February
1st thru 28th**

*Decorate for
the New Year*

20% Off

Fair Trade
Gift Items
Green Box Art
Pillows, Candles
& Potpourri

\$5.00 Off

regular retail
price per gallon
of Ben Moore
Paint
Regal, Natura,
& Aura

20% Off

Custom made
draperies,
valences and
upholstery
(fabric only)



**Michael &
Valerie wish
our Friends
and Customers
a Healthy &
Prosperous
New Year!!**

**Will's
Decorating**

5122 Baltimore Avenue,
Hyattsville

301-937-6100

Using our Tools: The Word Processor

This month we continue the “Using our Tools” series with the Word Processor. Word processing was one of the most successful categories of software at the dawn of the microcomputer industry. WordStar, an early 8-bit program dominated the business systems running on CP/M on green screens until MS-DOS and 16-bit systems took over. Then Word Perfect became the leader until computers with Graphical User Interfaces (GUI’s) like the Apple Macintosh and Microsoft Windows became dominate. In a few years Microsoft began to dominate with Microsoft Word for Windows which was followed eventually by the Microsoft Office Suite (MS-Office).

About this time, the market for word processing changed. Over the years companies began bundling the word processor with other common office tools, including a spreadsheet, a presentation tool, and other useful software like email clients, and drawing programs. These were packaged into a single collection of applications known as the “Office Suite”.

Today Microsoft Office and Office 365 are the dominate Office Suites in the market and are offered for purchase on most Windows 10, 11, and Apple computers. Microsoft also offers a less capable browser-based version of their office suite as well.

While Microsoft Office domi-



nates the office suite market there are some notable alternatives. Google offers an online suite of products that includes Google Docs as a reasonably powerful Word Processor. The Google Docs suite of tools runs on the browser and operates on almost any computer with a standards compatible browser. LibreOffice is a completely free and open-source Office Suite. It is largely compatible with MS-Office, well supported and maintained, and great for systems like Linux where MS-Office is not as readily available.

There are many other Word Processors and Office Suites out there, but the three we have mentioned already are the most popular. We will focus on only these products.

What is a Word Processor?

So, it may seem obvious to you now, it hasn’t always been obvious, a Word Processor is a tool used to assist in the creation

of formatted written documents. This is different from a text editor for example which typically has little if any formatting tools. In spite of the fact that in the early days of micro-computing WordStar was commonly used as a text editor. A word processor is not a typewriter. Typewriters have limited formatting capabilities that are normally manually forced. For example, double spacing on a typewriter means hitting the return key twice between lines on typewriter, but is considered a mistake on a word processor. Formatting on a word processor is mostly automated using styles which control fonts, spacing both vertically and horizontally, page organization, and many other things that make modern printed or displayed documents more like professionally typeset documents of old.

So, in addition to editing text, the word processor allows us to determine the attributes of the text like; the font, size, emphasis (or bold), italics, underline, strikethrough, color, and background-

color of the text. It also allows us to automatically perform left, right, and center justification and space text evenly from border to border of the page. It automatically kerns or adjusts the spacing between proportional letters. Styles can be created by combining these attributes, so that a title looks differently than normal text for example. All of this is done to make your documents easier to read.

WYSIWYG and Printing

Before the GUI a word processor might only show style codes and the only way to see what was going to print was to print it. Now we see something that is close to what the printed output will be, and we can use “preview mode” to get a preview of the printed version without printing. This is called “what you see is what you get” abbreviated as WYSIWYG pronounced as wizzywig.

Printers have even changed; in the early days many printers only had a few built-in fonts and you might purchase a graphics mode driver to get nicer printouts. Modern printers can replicate or download almost any font and use a page description language (like Postscript for example) to describe to the printer exactly what it should print on each page. This means that what I am printing matches what I expected based on that the screen showed me.

Spelling and Grammar

In my first business I used WordStar as my word processor, and it included a spellchecker. You might think that a spellchecker is a form of magic, as you type it checks your spelling and underlines your mistakes so you can make the correction. It will even suggest corrections for you. My point here is that this is an OLD technology and has been around for 40 years so everyone should be using it by now. Yet I still see college papers with spelling errors.

Now sometimes the spellchecker and I would have a disagreement on certain words. Beltsville is a good example, of course I know how to spell it, but the computer may not. Fortunately, the computer gives you the ability to add new words like Beltsville and the computer will not make the mistake again. See, sometimes it really is the computers’ fault!

Most word processors also have grammar checkers. This is not as smooth as spell checking. Most people when a spelling error is pointed out know what to do. But if the computer puts up a note that says, “passive voice” they are lost. Consider this a learning opportunity. Get out your grammar manual or ask Google and you will find many examples and much advice on mending your ways. It isn’t as easy to fix the computer on this one but is worth the effort to upgrade your own grammatical shortcomings. Also, isn’t this why we hire editors and why our editors are so appreciated?

Final Words

I do appreciate my editors but I also do have limited space and I have run out of it this month. I expect we will continue with our topic on word processing next month. In the meantime, enjoy your computer.

Share Your News!



Send your neighborhood news items to:
editorbvnews@gmail.com

LIVINGWELL HAS SAVINGS
ON YOUR FAVORITE HEALTH PRODUCTS



Now with an online store. Visit,
WWW.LIVINGWELLABC.COM
and click on “Shop”. Working to help you find resources to keep living well.

LIVINGWELL IS YOUR SOURCE FOR

Vegan & Vegetarian Foods **Christian Gifts & Decor**
Natural Care & Beauty **Christian Media**
Vitamins & Supplements **Healthy Vegan Smoothies**

12004 CHERRY HILL ROAD, SILVER SPRING, MD 20904
WWW.LIVINGWELLABC.COM | 301-572-0700
SUN: 9 AM - 6 PM | M-TH: 9 AM - 9 PM | FRI: 9 AM - 3 PM | SAT: CLOSED

20% OFF
ONE ITEM AT LIVINGWELL

Limited to 1 item; 1 coupon per customer; Not eligible on sale items; Limited to in-stock items only; in-store use only; Must be presented to cashier at time of payment to redeem; Cannot be combined with other sales, discounts, or coupons.

VALID ALL OF FEB 2023



BELTS23

HOME HEALTHCARE FOR SENIORS & PHYSICALLY CHALLENGED

301-798-5678

NO MINIMUM HOURS REQUIRED

AFFORDABLE . FLEXIBLE . COMPASSIONATE . QUALITY HOMECARE



WE PROVIDE 24/7 HOMECARE
FOR INDIVIDUALS WITH:

STROKE
DEMENTIA
ALZHEIMER'S
PARKINSON'S
VISION IMPAIRED
MULTIPLE SCLEROSIS (MS)
PHYSICALLY CHALLENGED
and MUCH MORE

Visit us on the Web
www.LifeNetHealthCare.com

Our Caregivers are Experienced, Licensed, Certified, Background-Checked & Registered with Maryland Board of Nursing. We carefully match your loved one with appropriately trained caregiver. LifeNet Adheres to HIPAA regulations & proudly assist with the following ADLs and IADLs & more-

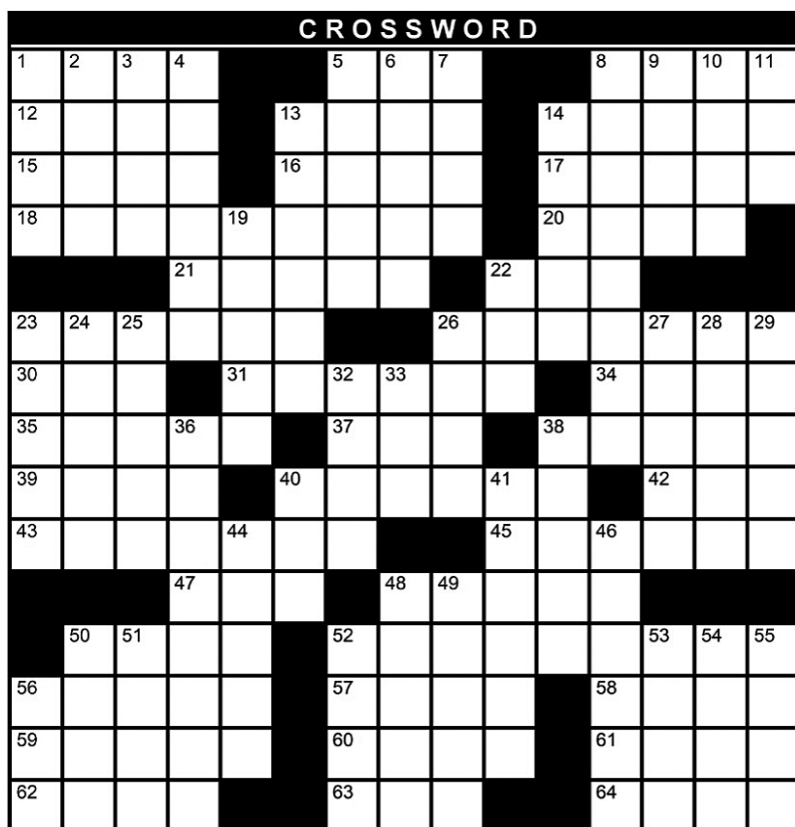
Bathing	Escort to Doctor's Appointments & other Events	Medication Reminder	Light Housekeeping & Household Management
Grooming & Head to Toe Skin Care	Personal Hygiene Care	Doctor's Appointment Scheduling & Reconciliation	Surgical & Rehabilitation Transition Care
Toilet Hygiene Care	Meal Planning & Preparation per Care Recipient's Choice	Incontinence Care	Transfer & Continuous Safety Supervision
Dressing	Feeding & Managing Diet, per Doctor's order	Assist with Prescribed Therapeutic Exercise & Activity Regimens	Laundry Management
Grocery & Household Shopping	Medication Management (RN) Wound care etc. (RN)	Periodic Assessments & Health Status Review by LifeNet RN	Respite Care
24/7 Live-In Care	Walking Exercise & Continuous Safety Monitoring	Running Errands (e.g. Picking up Medication from Pharmacy)	Mother-Baby: Care for Pregnant or New Mother
24/7 Live-Out Care			

FREE
IN-HOME
CONSULTATION.
REGISTERED NURSE
ON CALL 24/7,
INCLUDING
WEEKENDS &
HOLIDAYS

LifeNet IS LICENSED BY
MARYLAND DEPARTMENT OF
HEALTH & MENTAL HYGIENE
NOW ACCEPTING
MEDICAID &
VETERAN
CLIENTS
PRIVATE PAY and
LONG-TERM INSURANCE



Statepoint Crossword: Classic Toys



ACROSS

1. * "___ Wars" toys from Kenner in the '70s
5. * Certain toy G.I.
8. Miss America's accessory
12. Pot inhale
13. Morsel of Little Miss Muffet's meal
14. Private
15. Larger-than-life
16. Children's author ___ Blyton
17. Post-Its
18. * Sticks and spools toy set
20. One of the Olsens
21. Gibson garnish
22. Middle-earth creature
23. Bias
26. Neat in appearance
30. Chasing game
31. Chancellor, in Europe
34. Not happening
35. Anomie, alt. sp.
37. Local area network
38. Re-attempt
39. Wyatt Earp's card game
40. Common parakeet, colloquially speaking
42. Snakelike fish
43. Not yet a wife
45. * Like certain toy Cathy
47. Mine deposit
48. Water nymph

50. Cassette contents

52. * Illuminated picture maker
56. Wainscots
57. Play parts
58. The Fonz: "Sit ___ ___!"
59. Face-to-face exams
60. Not this
61. Brainchild
62. Homey, alt. sp.
63. "Fight for You" singer
64. High rocky hills

DOWN

1. Editor's mark
2. African antelope
3. Related
4. Suppose
5. Political club, in the olden days
6. Celestial hunter
7. Whirlpool
8. * Sno-Cone, actually (2 words)
9. Opposed to
10. "As ___ on TV"
11. Retail posting acronym
13. Blood-red
14. Beginning of essay
19. "Dear Diary" bit
22. Hockey legend
23. "The Office" people, e.g.
24. Veranda on Oahu

25. Ancient Greece marketplace
26. "The ___ Show" (1976-1980)
27. Sacred song
28. White heron
29. * Raggedy Ann or Strawberry Shortcake, tenderly
32. * Professor Plum and Colonel Mustard game
33. Little bit
36. * Avenues and rail roads game
38. Betty Ford Center, e.g.
40. Spelling contest
41. Superlative of icy
44. Edible herb
46. Quick and skillful
48. Specialty
49. Rose oil
50. Tropical edible root
51. Dwayne Johnson's 2022 role Black ___
52. Wooden slat
53. ___-China
54. Part of a traditional wedding cake
55. Greek Hs
56. * Play-___

See Solution on page 11



BRING EVERYTHING YOU LOVE TOGETHER!

Blazing Fast Internet!
ADD TO YOUR PACKAGE FOR ONLY **\$19.99/mo.** where available

2-YEAR TV PRICE GUARANTEE **\$69.99/mo.** for 12 mos. America's Top 120 Package **190 CHANNELS** Including Local Channels!

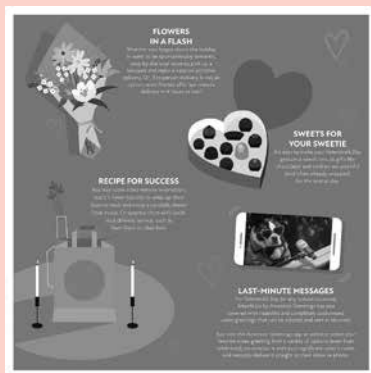
CALL TODAY - For \$100 Gift Card Promo Code: DISH100
1-888-416-7103 Offer ends 11/9/22. 

Save Valentine's Day With These Last-Minute Gift Ideas

(StatePoint) Valentine's Day is an age-old tradition, and it falls on the same day each year, but that doesn't necessarily mean you've planned ahead for the occasion.

The good news? There are more thoughtful ways to spontaneously express your love than ever before, thanks to new digital tools. In addition to the classic options, like flowers, you might consider treating your loved one to their favorite meal via a delivery service like Door Dash or Uber Eats, or sending them a heartfelt, customized video greeting with Smash-Ups from americangreetings.com.

If Valentine's Day catches you by surprise this year, fear not. These days, meaningful, creative gift options that can be delivered in hours, or even seconds, abound.



From the Office of Council Member Tom Dernoga

Chair Dernoga and Kojo Nnamdi

Chair Tom Dernoga appeared on "The Politics Hour" with host Kojo Nnamdi and resident analyst Tom Sherwood on January 13. The show aired on member-supported WAMU-FM 88.5, American University Radio. To listen to the recording, visit <https://bit.ly/3ZAMzcG>. Chair Dernoga discussed his priorities for the year ahead, including affordable housing and open government and what it is like working with the freshman lawmakers.

Proposed Development in Vansville

A developer is seeking to develop 7.75 acres of land at the southeast intersection of Old Baltimore Pike and Ammendale Way with an address of 11701 Old Baltimore Pike, Vansville ("Subject Property") into a townhouse community with a maximum of 67 units. This property is zoned Commercial, General and Office (CGO), and townhomes are permitted within this zone. All proposed townhomes will be sold at the market rate.

They will be holding a neighborhood meeting per Maryland National Capital Park and Planning Commission (M-NCPPC) guidelines on Wednesday, February 15, 2023, at Beltsville Library at 6:30 PM to discuss this project in greater detail with the community. For more information: Nate Forman (301) 572-3237

Keep Your Pipes from Freezing

Frozen pipes can be the worst. Keep your water running at a trickle to avoid calling a plumber in the future. Some homeowners even



From left: Councilmember Kristin Mink, Montgomery County District 5; Riderwood Democratic Club Sandy Morse, Vice President; Bea Rodgers, President; Nettie Baldwin, Vice President; and Chair Tom Dernoga, District 1 on January 11.

wrap their pipes in special foam insulation, commonly sold at big box stores. Should you have a pipe burst, call WSSC Emergency Services at (301) 206-4002 or email: emergencycallcenter@wsscwater.com. Be prepared. Whether the water main break is in your house or the street, have 1 – 2 gallons per person in the home and water for your pets. Don't forget the additional water to flush the toilet. To receive emergency alerts, sign up here: <http://bit.ly/3J1dqZU>

A Balanced Lunch with a Dash of Camaraderie

The Senior Nutrition Program, operated by the Prince George's County Department of Family Services, Area Agency on Aging, offers a nutritionally balanced lunch and a dash of camaraderie at the Laurel Beltsville Seniors Activity Center (LBSAC) to individuals 60 or older. These lunches are served at LBSAC Mondays and Wednesdays from 11:30 AM to 12:30 PM.

Meal Registration: Call the Department of Family Services, Aging Services Division at (301) 206-3368. You'll need to register at least one day in advance. The suggested donation is \$4.00. Please cancel your meal at least two days in advance if you need to cancel your feed. Please bring exact change to cover your donation.

Transportation Registration: For transportation to LBSAC, call the Department of Public Works and Transportation (DPWT) Intake line at (301) 499-8603 and press 1 or 6. There will be no lunch program when Prince George's County schools have a delayed opening or are closed due to inclement weather conditions.

Contact Us

Please keep in touch. Email us at councildistrict1@co.pg.md.us or call (301) 952-3887. Se habla Español. Follow us on Facebook, Twitter, and Instagram: @Tom-DernogaD1

Affordable pet INSURANCE

Pets fill our days with love and joy.

No one ever wants to imagine their pet sick or injured. But with Physicians Mutual pet insurance, you can help keep your pet healthy and happy.



Go to any vet



100% reimbursement on vet bills available



No lifetime limit on benefits

Help protect your pet and pocketbook

1-855-287-9790

InsureBarkMeow.com/Belt



Physicians Mutual Insurance Company
For complete details, including costs and limitations, please contact us. Product not available in all states.
6294

Third Annual Joseph Warren McPherson Memorial Poetry Contest

The Brookewood School and Avalon School are pleased to announce the Third Annual Joseph Warren McPherson Memorial Poetry Contest. The contest is open to students enrolled in grades 9–12 in public, private, or home schools in Washington, DC, and in Montgomery County and Prince Georges County, MD. 1st place winners will receive \$1000, 2nd place \$750, 3rd place \$500, and 7 runners-up will receive \$100.

Students may submit one or two original poems, each with a maximum of 25 lines, by March 17, 2023. Ten finalists will recite their poems from memory at the competition on April 22, 2023. (Two alternates will be named as well.) Judges will consider both the quality of the poem itself and the skill of the recitation in determining competition winners; reci-



The Memorial Poetry Contest is to honor the life and work of Joseph W. McPherson (1948-2019) who loved poetry, especially its usefulness in revealing the true, the good and the beautiful.

tations allow for an embodiment of the poem but do not treat it as dramatic monologue.

While Mr. McPherson loved the sonnet, poems for this competition may be in any fixed or shaping form, including free verse. If you submit to this competition a poem that has been submitted or accepted for publication or contests elsewhere, you must disclose this information at the time of submission. Students must submit their poems below by Friday, March 17, 2023. Finalists will be notified by email by April 3, 2023. Recitation competition for finalists on Saturday, April 22, 2022. Students can submit their poetry at <https://tinyurl.com/nhf8cpwr>

If you have any questions email jwmpoetry@brookewood.org.

Would you be smiling if this happened to your eyeglass frame?

Yes, if you wear frames made from Flexon.

Hours: Tues. & Wed. - 9am - 7pm
Thurs. & Fri. - 9am - 6pm
Sat. - 10am - 2pm
Sun. & Mon. - CLOSED

FLEXON
BY MARCHON



Brewer & Marshall, Inc. Opticians

10490 Baltimore Ave. • Beltsville, MD 20705

301-937-3677

© 1998 Flexon® is a registered trademark of Marchon Eyewear, Inc.

Rosapepe's Report to Beltsville

My wife Sheilah and I were happy to see so many Beltsville neighbors at our 2023 Winter Brunch on last month. We were joined by US Congressman Glenn Ivey, who now represents all of Beltsville.

Maryland 2023 General Assembly is in session

- Top priorities include:
- Investing the state budget surplus prudently
 - Putting funds in the state's Rainy-Day Fund to protect public services in a future recession
 - Protect state funding for roads, schools, environmental protection and public safety
 - Expanding apprenticeship opportunities for young people to help employee labor skills

You can track and view this year's legislation on the Maryland General Assembly website and if you need anything from my office, feel free to call or email me and my staff at 410-841-3141 or jim.rosapepe@senate.state.md.us

Help for neighbors hit by extreme weather

Our current emergency funding law requires a State of Emergency by the Governor before moving through a convoluted process to



Our new Congressman, Glenn Ivey, with Senator Rosapepe at our Winter Brunch

get money out the door. I'm sponsoring legislation to create a \$20 million dollar fund in the Department of Emergency Management that can be quickly deployed in the event of an emergency declaration by the Governor or a county leader.

Maryland Veterans Service Animal Program open for 2023 grant applications

Grant applications will be accepted through February 13 with awards between \$10,000-

\$25,000 going to eligible organizations who train service and support dogs or who provide equine therapy to veterans. For more information visit: <https://veterans.maryland.gov/maryland-veterans-service-animal-program-and-fund/>

Know someone who needs help to stay in their home?

The Maryland Homeowner Assistance Fund provides mortgage relief, weatherization, housing counseling, and legal services. Visit the website <http://homeownerassistance.maryland.gov> or call 877-546-5595.

Contact me

Please let me know if there are other issues you have questions or thoughts about. And, of course, feel free to be in touch if I can be of help to you. Just email 21stDistrictDelegation@gmail.com or call 410-841-3141.



Riderwood's newest Associate Executive Director, John Porter.

Riderwood Appoints John Porter as New Associate Executive Director

Silver Spring, MD - This past fall, John Porter was appointed associate executive director at Riderwood, the Erickson Senior Living community in Silver Spring, Md.

Porter, who most recently served as director of dining at Ashby Ponds, an Erickson Senior Living community in Ashburn, Va., began his senior living career at Riderwood almost 15 years ago. In that time, he's proven himself to be a dedicated and effective leader who excels at supporting both residents and staff.

"We are excited to welcome him back to Riderwood, where he will serve the community at the highest level," says Dee Dee Gray-Weaver, Riderwood's

PORTER
continues on page 11

Comprehensive Community Cleanup

Each community has been selected for Prince George's County's Comprehensive Community Cleanup Program that is designed to help residents and businesses improve the appearance of their neighborhoods. The program is a joint effort between the Department of the Environment, Planning and Administration, the Department of Public Works, and the Department of Transportation. The program is a joint effort between the Department of the Environment, Planning and Administration, the Department of Public Works, and the Department of Transportation. The program is a joint effort between the Department of the Environment, Planning and Administration, the Department of Public Works, and the Department of Transportation.

BELTSVILLE

Phase 1: February 21 - March 2
Phase 2: February 27 - March 9

Need Additional Information on How to Enhance and Preserve Your Community?

Comprehensive Community Cleanup
Abandoned Vehicles
Bulky Trash Collection
Enforcement Division
Housing Code Compliance
Roadside Utility Pickup
Storm Drain Maintenance
Tree Trimming (on County Property)

PGC 311

Bulky Trash Collection
Bulky trash is collected at curbside on a designated day and includes such items as furniture, refrigerators (without doors), washing machines, water tanks and other similar items. Items are accepted for collection between 7:00 a.m. and 6 p.m. on the designated day. For information on proper hazardous waste disposal, call the Recycling Section at (202) 882-5045.

These services are brought to you by Prince George's County's Department of the Environment, Sustainability Division, Resource Recovery Division, Stormwater Management Division and Abandoned Vehicle Team. For more information, visit www.pgc.org/cleanup or call (202) 882-5045.

ON THE AGENDA

continued from page 1

If you would like a copy of the Clean Up program, send me an email karenmcoakley@gmail.com.

Winter Car Safety Tip

Car thieves are watching so on those cold winter mornings. Do not leave your car unoccupied while warming up. In January 25 cars at a Beltsville Apartment complex had airbags stolen. Consider using "The Club" on your steering wheel to protect one of your airbags.

The Citizens Association will not meet in February, if you have a community concern, I can be reached at karenmcoakley@gmail.com.



Check us out on Facebook!
The Beltsville News

Need Repair Work?

301-277-7200

Senior Discounts

DECK SPECIALS
NO PAYMENTS UNTIL 2024

CHAMPION

HOME IMPROVEMENTS, LLC

ROOFS • DECKS • GUTTERS • SIDING • WINDOWS
ROOF INSPECTIONS WITH GUTTER CLEANING

Low Monthly Payments

FREE Estimates*



FREE ESTIMATES FOR ROOF REPLACEMENTS!!!



BONDED • INSURED MHIC # 44848

www.mychampionhome.com

Wood's Flowers and Gifts

Family-owned and operated since 1938

Fresh Flowers • Beautiful Roses • Cards • Plants
Dish Gardens • Orchid Plants • Silk Flowers
Stuffed Animals • Balloons

Order early and send early! Why wait until Feb. 14th?

Surprise your special someone on the 11th, 12th, or 13th.

We are open Sat. the 11th and Sunday the 12th.



9223 Baltimore Ave. College Park, MD 20740

301-474-7000

www.woodsflowersandgifts.com

**Orndorff
& Spaid
Inc.**

**ROOFING
Over 65 Years!**



MAKE ROOFING the career for you...

JOIN OUR TEAM of experts who are respected as one of the
top commercial roofing contractors for the last 65 years.

- ✓ **Want to learn a skilled Profession?**
Become a skilled roofing applicator in the field of built-up, single ply or sheet metal.
- ✓ **Prefer working outdoors?**
Avoid the hassles of a cramped office and having to wear a suit and tie.
- ✓ **Looking for a career that offers both challenge and variety?**
Work all over the metropolitan area on many different types of office buildings, schools & shopping centers.
- ✓ **Like to take pride in your work?**
Nothing beats driving by a local landmark knowing that you worked on that job
- ✓ **Excellent benefits.**
Health insurance
Life insurance
Long/short term disability
Retirement Plan
Vacation Package
- ✓ **One of the nation's top installers of commercial roofing & sheet metal.**
We are proud of our quality work throughout the metropolitan area. We have worked on some of the area's most prestigious projects.
- ✓ **Family Owned Business.**
Were in our second generation and have the philosophy that our business will continue for many more generations to come.

✓ **Stop by or call us when you're ready to start your career.**

301-937-5911

Roofing and Sheet Metal Co.
11722 Old Baltimore Pike,
Beltsville, MD 20705

www.osroofing.com

Your **BEST** resolution of 2023!

1.99% APR

**ON BALANCE
TRANSFERS
THRU 2023!***



PLUS:

- **NO** Balance Transfer Fees*
- **NO** Annual Fees*
- Quick Online Application

DON'T HAVE A CARD? APPLY NOW!



WWW.PRINCEGEORGESFCU.ORG/VISA
800.952.PGCU | 301.627.2666

Beltsville Branch

6985 Muirkirk Meadows Dr., Beltsville, MD 20705

Bowie Branch

15201 Hall Rd., Bowie, MD 20721

Largo Branch

9201 Basil Court, Largo, MD 20774

*APR = Annual Percentage Rate. Promotional Balance Transfer APR is 1.99% on transferred balances until December 31, 2023; then the standard Balance Transfer APR applies. Standard Balance Transfer APR: 8.99% to 17.99%, based on your creditworthiness. The Promotional Rate is not available on Visa Secured credit cards. It does not apply to balances transferred from Prince George's Community Federal Credit Union loans. You may transfer up to your available credit limit. Please continue to make minimum payments on your other credit card(s) until the balance has been transferred. The other institution(s) will refund all overpayments. Payment of the account(s) authorized by you may not satisfy any outstanding balance(s) on the designated account(s). Prince George's Community Federal Credit Union is not responsible for any outstanding balance(s) or additional charges in regard to such accounts, or for any changes resulting in any delay in the payment or transfer of balances. The total amount(s) transferred will be treated as a cash advance; finance charges will be applied from the day the balance(s) are transferred to your Prince George's Community Federal Credit Union credit card account. Prince George's Community Federal Credit Union reserves the right to refuse multiple transfers from the same credit card. Certain restrictions apply. For more information and conditions, please contact us.



Partnering for Financial Success

EQUAL HOUSING LENDER 

Federally insured by NCUA

What the Latest Science Says About COVID-19 Testing and Treatment

(StatePoint) While it can be tempting to think of the pandemic as something that occurred in the past, the reality is that COVID-19 continues to be a significant burden in the United States. As of November 2022, there are more than 39,000 new cases, more than 3,000 hospitalizations and about 350 deaths attributable to COVID-19 each day.

“We’re not out of the woods yet,” says Albert A. Rizzo, M.D., chief medical officer for the American Lung Association. “That’s why it’s so important for those at high risk to understand when to test for the disease and to learn more about available treatment options.”

In response to the evolving science, the American Lung Association, with support from Pfizer, aims to encourage older adults, people living with chronic lung disease and other high-risk individuals to speak with their healthcare provider about their treatment options if they test positive for



(c) dragana991 / iStock via Getty Images Plus

COVID-19.

Testing

Cold and flu season is upon us, and we will continue to see increased cases of infectious respiratory diseases, including flu, respiratory syncytial virus (RSV) and COVID-19. If you experience symptoms that could be

COVID-19, get tested right away. Keep in mind that many infectious respiratory illnesses have similar symptoms, so during flu season, it’s especially important to get tested to find out which virus you have, and which treatment is right for you.

If you’re exposed to COVID-19 but don’t experience symptoms,

you should also test at least five days after the exposure, with day 0 being the day of contact. You may also consider getting tested prior to visiting someone at high risk for severe COVID-19 illness.

If you test positive for COVID-19 and are high risk, speak with your healthcare provider right away about available treatment options.

Treatment

Treatment may help prevent severe illness and reduce the risk of hospitalization. Depending on your situation, your healthcare provider may prescribe one of the following:

- Oral antiviral medications, which may reduce the spread of COVID-19 throughout the body by stopping the virus from making copies of itself. This medication should be taken as soon as possible after diagnosis and within five days of symptom onset.
- Monoclonal antibody treat-

ment, an IV infusion antiviral medication, can help your immune system fight off the virus by blocking and limiting the amount of virus within the body. This medication should be given as soon as possible, and within seven days of when you started feeling ill.

After treatment, be sure to monitor your condition and report any lingering or worsening symptoms to your healthcare provider. If you begin having difficulty breathing or any other symptom indicating severe illness, seek urgent care.

For more information about COVID-19 testing and treatment, visit [Lung.org/treating-COVID](https://www.lung.org/treating-COVID).

“While effective treatments can help prevent severe illness after infection, vaccination is still the best protection against COVID-19,” says Dr. Rizzo. “Keep your vaccinations up to date. Check with your healthcare provider to see if you’re eligible for an updated booster.”

A Family’s Harrowing Experience With RSV

(StatePoint) Respiratory Syncytial Virus, or RSV, is so common that nearly 100% of children have been infected by age 2. Most people, including infants, develop only mild cold-like symptoms. However, for some, RSV can be severe and even life threatening. Many people are surprised to learn that RSV is the leading cause of hospitalization in infants.

The American Lung Association, with support from Sanofi, is raising awareness of RSV among new and expecting parents and caregivers of infants and toddlers. As part of the campaign, they’re sharing the story of a family impacted by RSV.

RSV was one of Sarah Driscoll’s biggest fears when her daughter was born. She’d heard

about it from social media and television commercials. So, after learning a few family members had a cough, she was wary about attending a Christmas Eve gathering with her newborn.

“My wife and I debated whether to go, but of course everyone wanted to see us and we wanted to share Charley with the family. I remember telling everyone to wash their hands before touching the baby and to keep their distance if they weren’t feeling well,” says Driscoll.

Not every family member observed Driscoll’s wishes and shortly after the gathering, Charley, six weeks old at the time, started to show symptoms of a respiratory illness, which worsened quickly.

“Charley was placed in the pediatric intensive care unit while her tiny body fought against RSV. She was put on forced oxygen. They had to put in a feeding tube. I have a lot of memories like that, but mostly those days blend together in my mind. I did everything in my power to have this baby, and I wasn’t going to let RSV take her away from me,” says Driscoll. “Thankfully, she got better. After five long days we were able to bring her home.”

Driscoll reports that today, Charley is a happy, healthy 2-year-old who loves puzzles, watching



the pediatrician to hospitalized in hours.

Symptoms to Watch For

The American Lung Association wants you to know that in the event your child does get sick from a respiratory infection, knowing these signs and symptoms of RSV can help you care for them:

- Mild symptoms include congestion, runny nose, fever and cough.
- Very young infants may be irritable, fatigued and have feeding difficulties.
- A barking or wheezing

cough can be one of the first signs of a more serious illness.

- Infants with severe RSV will have short, shallow and rapid breathing. Their mouth, lips and fingernails may also turn bluish due to lack of oxygen.

Call your pediatrician if your child has a poor appetite, a decrease in activity level, cold-like symptoms that become severe, a shallow cough that continues day and night, or any new or lingering symptoms that you find worrisome. Seek emergency care if your child is having trouble breathing. For more information, visit [Lung.org/RSV](https://www.lung.org/RSV). Affecting millions of Americans each year, RSV is highly contagious. However, you can help protect your child by learning the facts.

Consumer Cellular®

SWITCH & GET

\$25

Off First Month of New Service!
USE PROMO CODE: GZ590

CALL CONSUMER CELLULAR 888-290-0311

© 2023 Consumer Cellular Inc. Terms and Conditions subject to change. New service activation on approved credit. Cellular service is not available in all areas and is subject to system limitations. For promo details please call 888-290-0311.

How to Deepen Children’s Civic Engagement

(StatePoint) Increasingly, parents of young children are placing a larger focus on civic engagement and giving back. Not sure where to get started or how to strengthen your involvement?

The following actions draw upon Points of Light’s Civic Circle, a framework that helps people understand the many facets of civic engagement and provides an opportunity to show children the variety of ways they can support causes they care about. Combine these ideas to engage your whole family, strengthen your community and amplify your efforts:

- 1. Volunteer. Hands-on action is always an amazing way to get involved. Whether you find time to volunteer at a local organization or use one of Points of Light’s DIY project guides, there are plenty of options for families of all ages and abilities. Consider projects that focus on issue areas that children can easily understand and get involved with, such



(c) dragana991 / iStock via Getty Images Plus

- as food insecurity, animal welfare and climate change.
- 2. Donate. Most organizations need financial support to continue their operations and deliver on their missions. Having a

- family fundraiser can be a great way to support an organization or cause. Whether you run a lemonade stand, plan a virtual fundraiser, sell friendship bracelets or do something else creative, activities like these help youth learn planning skills and the value of supporting organizations financially.
- 3. Purchase Power. Consider shopping at small local businesses or BIPOC- or women-owned businesses. You can also find and support companies that give back – either with a percentage of proceeds or by working sustainably.
- 4. Listen and Learn. A critical element of civic engagement is listening to and learning from the community you hope to serve. Before taking action, learn about what’s really needed. If you can’t talk to those directly impacted, ask a local nonprofit organization if they have suggestions or more information. You can also read books, listen to podcasts

- or watch documentaries about the causes you wish to support.
 - 5. Use Your Voice. Helping kids find their voice is important because they can use it to harness their power in bringing awareness to important causes. Kids can share information by telling friends and family what they learned over a dinner, sharing a report at school, or providing information for others with an action item to take.
- If you’re looking for tactical ideas, Points of Light’s website has family-friendly tool-kits for youth of all ages that incorporates some of these elements. Visit www.pointsoflight.org to find a project that’s right for you.
- Let your initial efforts be just a starting point. Taking action and understanding the impact of your work can lead to a lifetime of civic engagement and service.

PORTER

continued from page 7

executive director. “Our residents will benefit from his proven leadership, expertise in senior living, and unwavering desire to help.”

Believe it or not, Porter has longstanding professional and personal ties to Riderwood. His mother, Sharon Porter, has lived at the community since 2003.

“It is a great honor and opportunity to return to Riderwood at this stage in my career,” says Porter. “I look forward to working directly with community members, including my mom.”

Solid foundation

A graduate of the University of Baltimore with a bachelor’s degree in business administration and management, Porter spent his first years out of college working in the restaurant and mortgage industries. When his parents decided to move to Riderwood,

the decision changed not only their lives, but his own as well.

“I visited my parents often,” Porter recalls. “I was so impressed with the community and the lifestyle it offered. Five years into their new life at Riderwood, I was considering a job change. Because I had dining and restaurant management experience, I applied for an assistant general manager position with Riderwood’s dining services team. I got the job—and have been enjoying a very rewarding career ever since.”

Throughout the years, Porter’s hard work and dedication earned him a number of promotions. In 2017, while serving as Riderwood’s assistant director of dining, he was offered a promotion to become director of dining at Ashby Ponds.

“Working at Riderwood was a tremendous experience and it prepared me for my position at Ashby Ponds,” says Porter. “I learned

that a key component of success is communication—earning the trust of residents by listening, responding, and making myself available. I also worked with wonderful staff members, all of whom worked toward the common goal of ensuring residents’ happiness.”

Proven leadership

For five years, Porter assisted with the development of Ashby Ponds.

“The community truly flourished. It was such a critical time because we grew so quickly in size,” he says. “I worked with a great team at Ashby Ponds, which, I believe, prepared me for taking on this new role at Riderwood.”

When Porter learned about the open associate executive director position at his “home” community, it seemed like the perfect fit.

“My mom was so excited,” he says, with a laugh. “She did all she could to not spread the word until

it was announced officially. I’m really happy that I can make this next move in my career with her close by.”

Porter, who assumed his new role in September, truly hit the ground running.

“This is an exciting time at Riderwood, as we’re working toward completing renovations to Montgomery Station, opening a new restaurant, and creating an outdoor fitness area,” he says. “But my priority has been to get out in the community and spend time interacting with residents.”

Porter was also delighted to reconnect with many of his former coworkers, all of whom are still thriving in their roles at Riderwood.

“People who knew me five years ago are coming up to me and saying hello,” he says. “It’s refreshing to see the people I worked with and how they’re still happy, engaged, and giving back

to residents.”

Closer to home

Porter’s new position at Riderwood also brings him closer to home. He lives with his wife Nancy and their two sons, George and James, in nearby Olney, Md.

“Nancy and I got married the same year I started at Riderwood,” he says. “My career at Erickson Senior Living has paralleled my personal life, which is special to me.”

When he’s not immersed in community life at Riderwood, Porter enjoys vacationing in Bethany Beach and spending time with extended family.

As the New Year begins, Porter looks forward to leaving his mark on the Riderwood community once again.

BELTSVILLE BRIEFS

continued from page 1

faction for helping where needed—that’s what seniors are good at.

The Beltsville VFD Ladies Auxiliary

The Ladies Auxiliary of the Beltsville Volunteer Fire Department would like to announce the installation of their Officers for the year 2023.

Congratulations to President Pam Casagrande, Vice President Cathy Alexander, Recording Secretary Bibi Gurwah, Treasurer Angela Whitman, Corresponding Secretary Paula Stickles, Chaplain Lois Hetz and Historian Jane Nealis.

Women’s Community Club of Beltsville

Women’s Community Club of Beltsville Holiday Program 2022. We sponsored 26 families at Thanksgiving and Christmas, helping 25 families with 73 Children. Christmas presents packed in Red Bags waiting to be delivered.

Join us for our next meeting Thursday, February 9th at 7:00 p.m. We will be planning our Spring



Christmas presents from the Women’s Community Club of Beltsville packed in Red Bags waiting to be delivered.

activities. We meet at the Beltsville Boys and Girls Club 11705 Roby Avenue. For more information email: womensclubbeltsville@gmail.com.

Crossword Solution from page 5

S	T	A	R			J	O	E			S	A	S	H			
T	O	K	E			C	U	R	D		I	N	N	E	R		
E	P	I	C			E	N	I	D		N	O	T	E	S		
T	I	N	K	E	R	T	O	Y			T	W	I	N			
				O	N	I	O	N			O	R	C				
S	L	A	N	T	S				G	R	O	O	M	E	D		
T	A	G			R	E	C	T	O	R		N	O	G	O		
A	N	O	M	Y			L	A	N		R	E	T	R	Y		
F	A	R	O			B	U	D	G	I	E		E	E	L		
F	I	A	N	C	E	E				C	H	A	T	T	Y		
				O	R	E			N	A	I	A	D				
		T	A	P	E				L	I	T	E	B	R	I	T	E
D	A	D	O	S					A	C	T	S		O	N	I	T
O	R	A	L	S					T	H	A	T		I	D	E	A
H	O	M	Y						H	E	R			T	O	R	S

Calendar of Events

Remember that all venues may change or cancel events based on the current health situation in Maryland. It's always a good idea to call ahead before going to an event.

AREA EVENTS

COLLEGE PARK AVIATION MUSEUM

Address: 1985 Corporal Frank Scott Dr., College Park, MD 20740. Phone: 301.864.6029. Fax: 301.927.6472. Regular hours of operation: Open Tuesday – Sunday from 10 a.m. to 4 p.m. Closed Mondays and major holidays. Cost: Adults/\$5; Seniors/\$4; Children/\$2 (1-year-old and under, free). The museum exhibit area highlights 10 unique aircraft and objects relating the history of early aviation at the College Park Airport. Please contact the museum regarding additional activities and updates to COVID-19 protocols.

SAVE THE DATE

Country Meets the Blues with Kissin' Cousins: Sat., Mar. 4 from 8 p.m. to 11 p.m. Open to the public; doors open at 7:30 p.m. Address: American Legion Post 217 at 9218 Baltimore Ave., College Park, MD 20740. Phone: 301.441.2783. We are putting on a fabulous dance!

Daryl Davis will be tickling the ivories and sharing the stage with Patsy Stephens. Your feet won't stay still to Daryl's boogie-woogie beat. Admission: \$20, CASH ONLY (exact change would be helpful). Food and drink available for purchase.

LAUREL-BELTSVILLE SENIOR ACTIVITY CENTER

Masks are optional. Contact the center for updates. Membership is free for Beltsville residents who are 60 years old or older. Closed on Sundays and most major holidays. Contact the center for updates to hours of operation and current COVID-19 protocols. Address: 7120 Contee Rd., Laurel, MD 20707, around the corner from the University of Maryland Medical Center. Phone: 301.206.3350. Fax: 301.206.3387. TTY: 301.446.3402.

LAUREL SENIOR FRIENDSHIP CLUB (LSFC)

We will have our next meeting on Wed., Feb. 8 at 10:30 a.m. The meeting room doors open at 9:30 a.m. We will have a short business meeting and entertain-

ment from the singing duo *Rearview Mirror*.

- Every Tuesday Bingo: 12 noon each Tuesday (doors open at 11 a.m.); fee for cards, NO admission fee.
- Save the Dates: Mar. 8, a CAM Physical Therapy speaker will speak on fall prevention and balance. Apr. 12, musical entertainment will be provided by *Havin' Fun*.
- Contact the LSFC office for more details on Monday, Tuesday, Wednesday, and Friday from 10 a.m. to 12:30 p.m. at 301.206.3380.

NATIONAL WILDLIFE VISITOR CENTER

Main phone: 301.497.5772. Address: 10901 Scarlet Tanager Loop, Laurel, MD 20708. The entrance is accessed from Powder Mill Rd. between the Baltimore-Washington Pkwy. and Rt. 197. Free admission and free parking. Current social distancing and face covering

CALENDAR

continues on page 14



"Make Deller Your Seller"

Bette Deller, CRS, GRI, SRES
Long & Foster Real Estate, Inc.
bette.deller@longandfoster.com
www.bettedeller.LNF.com
301-384-8700 (Office)
301-257-5852 (Cell)

Downsizing or Relocating? CALL ME TO LIST YOUR HOME.
Interest Rates are Still Low! CALL ME TO HELP YOU BUY.

Experienced, Credentialed, and Local
Wondering What Your Home is Worth?

Go to www.homesandprices.com

LONG & FOSTER
REAL ESTATE



Home is Where the Heart Is!
Why Not Give Your Heart a New Home This Month?
Call Bette Deller to Help You Buy or Sell.



This is not intended to solicit currently listed properties.



Karen M. Coakley

*You know me . . .
I know Real Estate!*

CHECK OUT THE 3D VIRTUAL TOURS
OF MY HOMES LISTED BELOW:



CALVERTON:
EXPECT TO BE
IMPRESSED!
UPGRADES &
UPDATES!
4 BDRM BRICK
RAMBLER
\$510,000

WEST LAUREL: \$499,000 SPILT LEVEL



BELTSVILLE \$529,999



BELTSVILLE • \$345,000

Karen M. Coakley GRI
Your 110% Real Estate Agent!
301-741-7672 (cell)
240-295-6000 (office)



RE/MAX
ADVANTAGE REALTY



**IF IT'S
REAL ESTATE,
IT'S
ROBERTA!!**



175 Admiral Cochrane Dr. Suite 112 Annapolis, MD 21401

ROBERTA
301-937-3124

Experienced, Reputable • Distinguished Sales Club
Full time professional • CRS, GRI, SFR



Associate Broker

E-mail: robertayaklich@gmail.com • Office: 301-970-2447

Prince George's Home Sales: Home Sales Increase 30.2% Over November, Average Sold Price Up 6.6%

Landover, MD, January 2023 - The Prince George's County Association of REALTORS® (PGCAR) reports Prince George's County home sales ended 2022 with an early and large rebound from November to December. Analysts say that interest rates decreasing from 7% to below 6.5% has been favorable enough in the healthier markets to incentivize a significant portion of home buyers and sellers who were waiting out the elevated rates. While it's still the winter season with plenty of room for growth, the early rebound is a strong indicator that the Prince George's County home market remains one of the strongest and most attractive to homebuyers.

During December, Total Sales Volume increased an astonishing 30.2% with an Average Sold Price of \$425,236, a 5.2% increase from November. Total Active Listings averaged 1,085 homes, while 731 Home Sales closed, and 568 New Pending Sales were added. Median Days on Market (DOM) was 20 days, 2 days more than November 2022. Average DOM was 29 days, close to the 5-year December average of 28 days while still low in longer-term comparisons.

The inventory of listed homes for sale averaged a 1.5-month supply in November, meaning that if no new listings are added, current listings would sell out in 1.5 months. This represents a 66.7% increase from November 2021 when we were in the midst of extremely tight supply, and equal to the 5-year November average of 1.5-month supply. We are encouraged that active listings are still significantly higher than November 2001, with 843 new "for sale" listings coming onto the Prince George's County market.

Welcome to January

Welcome to January. I am excited about this new year and all the blessings it has in store for all of us. It will no doubt be filled with challenges but be strong and trust that victory will be yours at the end of it all.

I do not make new year's resolutions, but this year I have decided to go back in time on a few things. I sang once or twice in the church towards the end of 2022, and I have decided to sum up the courage to start singing on a regular basis in church once again. This takes me back to my roots as the son of a prominent music teacher. I know my mother keeps encouraging me to try and take up piano playing again, but I believe that ship sailed away from me in 1982 when as a teenager,

I was given the option to keep on playing or not, and I chose to stop. Typical teenager, I rebelled against having to practice piano daily. Now I have my regrets about not being able to play. It has been forty years. Thankfully my children have taken up that role for me and play very well. So, I will sing in church once in January and then at two other local churches in Dallas, in February and March, respectfully.

I am thankful for the opportunity to live in Dallas. I have seen a lot of development in the four years since I left Beltsville. I now live in a town, north of Dallas, where I have been able to see some areas transition from farmland or forest to homes. I have seen how communities are

created. The homes have been built, now schools are being put in place to support the growing community in addition, to certain amenities, like stores, restaurants, medical facilities, and also emergency services.

The PGA Headquarters is being built near where I live, and right next to that, Omni Resorts has a massive project going on. Earlier this month, a news report indicated that Universal Studios is going to build a new theme park in the Frisco part of North Dallas. That is less than 10 miles from where I live, so there is a lot of excitement from those with children. On the other hand, there are concerns about the traffic situation.

Thankfully, University Boulevard, which is similar to our Route

1 in Beltsville is being widened to have four lanes, which will improve the traffic situation somewhat. However, based on the pace at which homes are being built here, even four lanes will not be enough.

I have enjoyed meeting older people in Dallas, and it is interesting to hear their stories, similar to mine, of how they have seen the whole city change. If you have ever been to Dallas, there is the Sam Rayburn Tollway, Rte. 121, which runs from McKinney, through Plano to DFW Airport, about a 30-mile stretch. I met a man this January who in conversation, remarked on how the highway used to be a one-lane Farm to Market Road. Even in the McKinney area where I met him, he said

a lot of the land was used for farming and they used to have a lot of dusty, bumpy roads. One can still remnants of such communities in some places like Pilot Point and beyond, heading in the direction of the state line with Oklahoma.

As I wrap this up, I will encourage you my reader to take the time to appreciate your community, particularly Beltsville. Enjoy the changes that are happening right before your eyes. Do you know the history of the building that currently houses the Police Station and Library/ What about the volunteer fire station off Rhode Island Avenue near Route 1? If you want to share the history of Beltsville with me, send me an email at jasoninanga@gmail.com and we can work on a story or two.

Spice Up Game Day With These Mouthwatering Recipes

(StatePoint) It's football season, and there's only one thing to make game day a bigger win: delicious game day food!

Looking to add some kick to kick-off? Take flavor and heat off the bench and put them into the game with these recipes from Frank's RedHot, America's number one hot sauce. Whether you're tailgating or hosting from home, Frank's RedHot Original Cayenne Pepper Hot Sauce, made with a premium blend of aged cayenne peppers, is a must-have ingredient.

Classic Buffalo Chicken Wings

If you're someone who agrees that no tailgate or watch party is complete without wings, you're in good company. According to Chef Jordan Carfagno of Frank's RedHot, chicken wings are the brand's most searched recipe during football season. And it's no wonder, Frank's is the original Buffalo wings sauce flavor. Anyone looking to kick their wings up a notch can try this mouthwatering recipe for a classic take on wings, and it can be made in the oven at home, or in an air fryer if you're tailgating.



Ingredients:

- 1/3 cup butter, melted
- 1/2 cup Frank's RedHot Original Cayenne Pepper Hot Sauce
- 2- and 1/2-pounds chicken wing pieces

Directions:

1. Preheat oven to 450 degrees F. Mix butter and RedHot Sauce in medium bowl; set aside.
2. Arrange wings on large foil-lined pan. Bake on lowest oven rack for 30 minutes or until crispy, turning once.
3. Toss wings in sauce mixture until well coated. Serve with blue cheese and celery, if desired.

Buffalo Chicken Dip

Chef Carfagno says dip recipes are gaining popularity this year, and this spicy creamy Buffalo chicken dip is the MVP of them all. Make it in the oven at home or plug in an instant pot or slow cooker for on-the-go prep.

Ingredients:

- 2 cups shredded cooked chicken
- 1 package (8 ounces) cream cheese, softened
- 1/2 cups Frank's RedHot Original Cayenne Pepper Hot Sauce
- 1/2 cup ranch dressing
- 1/2 cup blue cheese crumbles

Directions:

1. Preheat oven to 350 degrees F. Mix all ingredients in a large bowl. Spoon into a shallow 1-quart baking dish.
2. Bake 20 minutes or until mixture is heated through; stir. Sprinkle with green onions, if desired, and serve with chips, crackers and cut up veggies.

Check out frankshredhot.com for more game-day recipes and inspiration.

This football season, bring your A-game to your tailgate spread by adding the perfect blend of flavor and heat to classic fan favorites.

Beltsville News
CHURCH DIRECTORY



Holy Apostles Orthodox Church
Come and see.


A Mission Parish of the Russian Orthodox Church Outside Russia

Located in Twin Chimneys Office Park
10760 Baltimore Ave, Beltsville, MD

Evening Vigil: Sat. 5:00 PM
Hours & Divine Liturgy: Sun. 9:40 AM

All Services in English


Fr. George Johnson, Rector
301-572-5738
www.holyapostlesorthodoxchurch.org



St. Gregory of Nyssa
Byzantine Catholic Church

(Alternating) 9, 11 am Sunday Liturgy. Schedule, Bulletin, Facebook:
www.stgregoryofnyssa.net

12420 Old Gunpowder Spur Road, Beltsville
(301) 953-9323 - Come and See



St. Joseph Catholic Church
www.stjosephbeltsville.org

Pastor: Father Robert Maro
Masses: Please contact parish office for schedule

Adult, Youth and Children Faith Formation
reled@stjosephbeltsville.org
Director: Mrs. Helene H. Stever

St. Joseph's Regional Catholic School
www.stjosrcs.org
Principal: Mrs. Erin Meunier

Masses: Sat Vigil 5:00pm, Sun's 8:30am*, 11:00am;
Mon, Wed-Friday 8:00am; Wed 2:15pm**; and 1st Sat's 8:00am

*The Mass on Sunday 8:30am is also live streamed, connect with us on Flocknote for the link. ** The Mass on Wednesday at 2:15pm is only when School is open.



Check us out on Facebook!
The Beltsville News

Beltsville News CHURCH DIRECTORY

Abiding Presence Lutheran Church

10774 Rhode Island Avenue
301-937-7646



Sunday Worship: 10:00 a.m.

Rev. Jongkil Na

www.APLChurch.org

Come and Join Us

Located in the Beltsville Professional Center

St. John's Episcopal/Anglican Church

11040 Baltimore Avenue Beltsville, MD 20704
301-937-4292 • www.saintjohnsbeltsville.org
The Reverend Joseph M. Constant, Rector

Join us for In Person Worship every Sunday at 10 AM
Youth Sunday School 11:15 AM

To view services online:

Go to <https://www.facebook.com/StJohnsZionParish/Live/>

Other services online via Zoom: Wednesday Noonday;
Thursday Bible Study and Compline 7 PM via Zoom

Contact the Church office if you
are interested in any of these
resources

Our Mission: To Share God's
love with everyone to bring
hope and change lives.



First Baptist Church of Beltsville (SBC)

4700 Odell Road
Beltsville, MD 20705
301-937-7771

www.fbcbeltsville.org

Keith Holland, Pastor

**Abundant Grace; Abundant
Life; Abundant God!**

Come Join Us

Sundays:

Sunday School for all ages	9:45 a.m.
Morning Worship	11:00 a.m.
Evening Worship	6:00 p.m.

Wednesdays:

Adult Bible Study & Prayer	7:00 p.m.
Youth Fellowship	7:00 p.m.

EMMANUEL UNITED METHODIST CHURCH

BELTSVILLE, MD

Engaging Our Community

Rev. Dr. Andrea Middleton King, Pastor
11416 Cedar Lane, Beltsville, MD 20705
(301)937-7114 † office@eumcbeltsville.com

www.eumcbeltsville.com

Find us on Facebook

<https://www.facebook.com/groups/EUMCBeltsville>

Follow us on Instagram @eumc_beltsville

Sunday Morning Hybrid Worship 10 AM

All In-Person Attendees are encouraged to wear a mask

Both in-person and virtual worship are closed captioned

Zoom details can be found on our website

You can also watch the live stream on our Facebook page.

What's Happening

† Worship Sundays at 10 am (in-person & virtual)

† Bible Study Wednesdays at 7 pm (virtual)

† Food Distribution Saturday, February 25: 8:00 - 9:30 am
for seniors and 9:30 to 11:00 am for the general public.

† UpStage Artists Presents Arsenic and Old Lace, February 17, 18, 19, 24,
25, 26.

There's always a seat for you at Emmanuel.
Consider visiting us in 2023. You are welcome
anytime.

"I was glad when they said to me, "Let us go to the
house of the Lord!"
Psalm 122



Check us out on Facebook!
The Beltsville News

Cross Creek
APOSTOLIC CHURCH

Welcome Home...
YOU Belong HERE

Sundays at 11am

12511 OLD GUNPOWDER SPUR RD
BELTSVILLE, MARYLAND 20705
CROSSCREEKAC.COM • 301-498-6006

CALENDAR

continued from page 12

requirements match those of Prince George's County. All dogs must be kept on a leash (no longer than 6 feet) for their own safety as well as that of other visitors and wildlife. Regular hours of operation for the trails and grounds are: Open daily from sunrise to sunset, *except for federal holidays*. See the Friends of Patuxent website for more information at <https://friendsofpatuxent.org/>.

THE BUILDING, ART GALLERY, & BOOKSTORE

Contact the Visitor Center for updates. Main phone: 301.497.5772. Join our e-mail list by contacting timothy_parker@fws.gov. More information can be found at www.fws.gov/refuge/patuxent. The Visitor Center and the art gallery are open Tuesday – Saturday from 9 a.m. to 4:30 p.m.; closed on Sunday, Monday, and federal holidays. The art gallery is adjacent to the bookstore. **The featured artists for February 2023 are Graeme Simpson & others.** The bookstore is open Tuesday – Friday from 11 a.m. to 4 p.m. and Saturday from 10 a.m. to 4 p.m.

KID'S DISCOVERY CENTER

Tuesday through Saturday: *Pre-registered parent/child teams* are invited into the Center on the hour, from 9 a.m. to 12 noon for a 35-minute, fun-filled session. Activities are age-appropriate for children ages 3 – 8 (no children under the age of 3 years old). Call our front desk at 301.497.5760 to make your reservation. **Winter theme for February: Deer.** Did you know that deer can see better in the night than they do in the day, and that white-tailed deer use their tails to signal danger to other deer? Find out more amazing facts about deer as you enjoy over a dozen hands-on activities.

MEET AN AMERICAN KESTREL

Sat., Feb. 11 from 1 p.m. to 1:30 p.m. All ages, no registration required. Come meet an American Kestrel. In this informal show-and-tell time, see what makes the American kestrel an expert at hunting in meadows.

CALENDAR

continues on page 15

PATIENCE

Patience and kindness
Are, by God's design,
Sides of the same coin
To give peace of mind.

Anger, frustration
Lurk stealth'ly behind
Doors of emotions
Which urge us to whine.

Waiting's a process
Perfecting, we find,
Fruit we're producing
By pruning our vines.

Love is an action,
Thanksgiving is prime,
Teaching us how to
Redeem all our time.

Beckie Hutchings
1/05/2023

Classifieds • Call 301-257-3408

SERVICES

HAULING AND JUNK REMOVAL.
Complete Clean Out - Garages, Homes,
Construction Debris, etc. Licensed,
insured, free estimates. Mike Smith 301-
346-0840. 07/23



Share Your News!

Send your
neighborhood
news
items to
editorbvnews@gmail.com

Reach your Beltsville neighbors with a "low-cost"
classified ad in The Beltsville News
Call 301-257-3408

BELTSVILLE VOLUNTEER FIRE DEPARTMENT



4911 Prince George's Avenue
301-641-1092

HALL RENTAL

Experienced Catering by Ladies Auxiliary!

WEDDING RECEPTIONS, BANQUETS, BIRTHDAY
PARTIES, BRIDAL SHOWERS OR ANY OTHER OCCASION

ED LUNDQUIST HOME IMPROVEMENT & REPAIR SPECIALIST (301) 775-9001

For all types of jobs around your home

Painting	Drywall	Gutters	Electrical	Flooring
Carpentry	Cement	Fences	Plumbing	Door Locks
Flooring	Ceramic Tile	Drain Cleaning	Power Washing	

NO JOB TOO SMALL

Beltsville Resident since 1985

Maryland Home Improvement License

Traditional
Funerals



Cremation
Service

Donald V. Borgwardt Funeral Home, P.A.

4400 Powder Mill Rd. Beltsville, MD 20705-2751

301-937-1707

www.borgwardtfuneralhome.com

JOE THE PLUMBER

For all your plumbing needs

Just call Joe the Plumber
301-693-5885

Call or text for quote
20 Years Experience

Water Heaters - Sump Pumps - Toilets
Disposals - Faucets - Leaking Pipes



ROLEN

HEATING AND AIR CONDITIONING
LICENSED • BONDED • INSURED



SERVING: CALVERTON, MONTGOMERY & PRINCE GEORGE'S COUNTIES
"DAY & NIGHT EMERGENCY SERVICES"

Service & Repairs -
All Makes & Models

PRECISION

MD State
Inspection



Engine Building
Trans. Building

Harley-Davidson
Indian

Hours: Tues - Fri 12-6, Sat 10-3
10745 Tucker St., Unit 3, Beltsville, Maryland 20705
301.937.5783

IF IT'S ELECTRICAL WORK YOU NEED US!
G.H.E. Electric Services, Inc.
Family Owned & Operated Since 1964
Residential & Commercial
Licensed & Insured
Everything electrical from basement to attic
Service Heavy Ups - Our Specialty
Replace Fuse Box with Circuit Breaker Box

Let Our Family of Skilled Electricians Serve You
Joseph J. Panizari, Sr. • Joseph J. Panizari, Jr.
Richard A. Panizari • Dino S. Panizari

11222 Old Baltimore Pike
Beltsville, Maryland 20705

301-937-5051
Fax 301-937-5054



BURTONSVILLE FUEL CO., INC.

"Family Owned & Operated
Since 1955"

HEATING OIL • DIESEL

Heating & Air
Conditioning



Oil Burner
Service

"Be One of Our Warm Friends"

301-384-7575

www.burtonsvillefuel.com

HALL RENTALS

(CATERING)

Luncheons—B'Day Parties—Anniversaries—Weddings

College Park American Legion—Post 217

9218 Baltimore Blvd.

(301) 441-2783

College Park, MD 20740



Contact Gary Kingery



CALENDAR

continued from page 14

FAMILY FUN: WINTER WILDLIFE

Fri., Feb. 17 and Sat., Feb. 18 from 10
a.m. to 1 p.m. each day. All ages, **regis-
tration required.**

We may spend cold weather snuggled
up inside, but most of the animals at
Patuxent continue going about their busi-
ness as usual. Winter is a great time to
look for wildlife, or for signs that they
are around. Even when we don't see the
animals themselves, we can tell which
ones have been here—and maybe what
they were doing—from the footprints
and other things they leave behind. Come
learn about local winter wildlife through
hands-on activities, games, and crafts for
all ages. *This is a drop-in program: come
when you wish and leave when you're
ready.*

WELCOMING CREATURES TO YOUR BACK YARD

Sat., Feb. 18 from 2 p.m. to 3 p.m. All
ages, **registration required.** Learn how
to provide basic habitat for common
native creatures in your yard. What foods
are best in winter? In this class we will
look at on-line resources available to help
you plan to attract and see more wildlife.

NESTING ALREADY?

Sat., Feb. 25 from 2 p.m. to 3 p.m. Ages
4 – 7, **registration required.** Some
birds nest much earlier than others. Join
Ranger Diana to find out why in this
interactive kids' program.

BELTSVILLE EVENTS

NATIONAL AGRICULTURAL LIBRARY (NAL)

Address: 10301 Baltimore Ave.
in Beltsville. Main phone number:
301.504.5755. NAL is on Twitter at
http://twitter.com/#!/National_Ag_Lib. We
continue to serve our customers remotely
during regular business hours. Online
information products are always available
at NAL.usda.gov and Nutrition.gov. Get
MyPlate nutrition information for babies
and toddlers via the free Amazon Alexa
app. To learn more, visit www.myplate.gov/myplateassistant.

BELTSVILLE LIBRARY

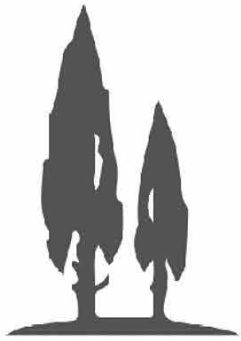
Address: 4319 Sellman Rd., Beltsville,
next to the police station. The main
phone number is 301.937.0294. TTY:
301.808.2061. Ask a Librarian telephone
reference: 240.455.5451. Regular hours
of operation are Mon., Thur., and Fri.
from 10 a.m. to 6 p.m.; Tue. and Wed.
from 12 noon to 8 p.m.; Sat. from 10
a.m. to 5 p.m.; and Sun. 1 p.m. to 5
p.m.; closed on most major holidays.
Contact the library for updates and late
changes. See [www.pgcmis.info/location/
Beltsville](http://www.pgcmis.info/location/Beltsville).

Reach your Beltsville
neighbors
with a low-cost
classified ad in
The Beltsville News
Call 301-257-3408

THE TOP RATED TREE SERVICE IN MD & DC

LARGE DANGEROUS TREES OUR SPECIALTY

RESIDENTIAL & COMMERCIAL • FULL SERVICE TREE CARE & PROTECTION



Adirondack Tree Experts

Removal • Pruning • Crown Reduction
Thinning • Crane Service • Trimming
Stump Grinding • Senior Citizen Discount
Online Coupons

Full Liability And Workman's Comp. Insurance
Washington Metro Area's Top Rated Tree Care & Removal Company.

"Online Coupons"

www.adirondacktreeexperts.com

Licensed Tree Experts

Maryland Tree Experts License #769

Fully Insured - TCIA Accredited



FREE ESTIMATES | 24 HOUR EMERGENCY SERVICE

877-595-2827 • Fax (301) 595-5420

301-595-2827

11304 Rhode Island Av., Beltsville

Adirondack is a Licensed and Insured tax paying company where all employees pay withholding tax